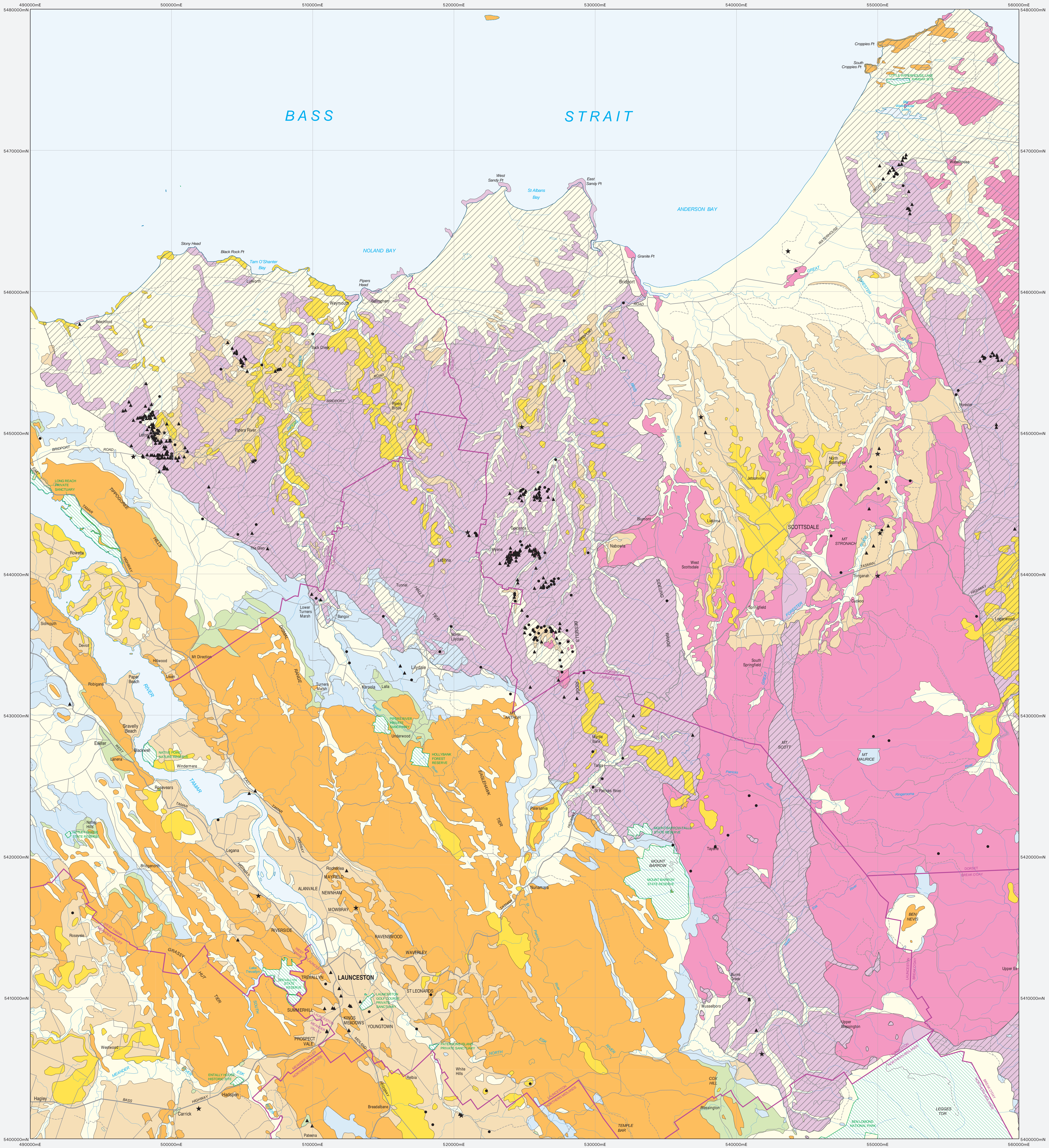


# MAP 6A – SIMPLIFIED GEOLOGY AND AREAS OF HIGHEST MINERAL EXPLORATION AND MINING POTENTIAL



QUATERNARY 0 – 1.8 million years before present  
Gravel, sand, clay, mud and minor limestone.

TERTIARY 1.8 – 65 million years before present  
Unconsolidated or cemented gravel, sand, silt and clay, minor limestone and brown coal.  
Basalt and related sediments.

CRETACEOUS 65 – 141 million years before present  
Intrusive and volcanic igneous rocks of various compositions (Cygnet and Cape Portland areas only).

JURASSIC 141 – 205 million years before present  
Dolomite.

TRIASSIC 205 – 251 million years before present  
Sandstone and mudstone, minor black coal, basalt and volcanic sediments.

PERMIAN – LATE CARBONIFEROUS 251 – 314 million years before present  
Mudstone, pebbly mudstone, sandstone and conglomerate, minor limestone, black coal and of shale.

EARLY CARBONIFEROUS – ORDOVICIAN 340 – 490 million years before present  
Granite and related intrusive and minor volcanic igneous rocks of various compositions.  
Folded and locally deformed sandstone, quartzite, siltstone, shale and slate, minor quartz veining.

ORDOVICIAN 434 – 490 million years before present  
Limestone and minor sandstone, siltstone and shale.

MIDDLE ORDOVICIAN – LATE CAMBRIAN 460 – 500 million years before present  
Folded and locally deformed conglomerate, sandstone, quartzite, siltstone and shale.

LATE – MIDDLE CAMBRIAN 490 – 510 million years before present  
Folded, deformed and altered volcanic rocks of various compositions, and related intrusive igneous rocks, sandstone, siltstone and conglomerate (includes Mt Read Volcanics).

MIDDLE – EARLY CAMBRIAN 510 – 545 million years before present  
Serpentinite and greenstones. Deformed and metamorphosed volcanic and intrusive igneous rocks of ultra mafic and basaltic compositions, and associated sandstone, mudstone and chert.

NEOPROTEROZOIC 545 – 1000 million years before present  
Deformed and metamorphosed basaltic volcanic rocks and associated sandstone, siltstone, shale, dolomite, chert and schist.

MESOPROTEROZOIC 1000 – 1600 million years before present  
Granite (King Island only).  
Deformed and metamorphosed quartzite, slate, siltstone, conglomerate, schist and dolomite.

Areas of highly prospective rocks. These areas have a high potential for exploration and mining tenements, especially in the vicinity of existing mine sites and prospects, as indicated.

Note: Land outside the highly prospective areas, except Reserved Land, can still be subject to exploration and mining tenements.

Reserved land / Land unavailable for exploration and mining tenement application.

Municipality boundary.

Active Mine

Abandoned Mine

Prospect or Mineral Occurrence

THIS MAP SHOULD BE USED IN CONJUNCTION WITH MAP B – MINING LEASES AND ACTIVE MINES, PITS AND QUARRIES.

Scale: 1:100000  
0 2 4 6 8 10km  
AGD86 – AMG Zone 55  
Contour Interval: 100 metres

The simplified geology for this map is derived from the 1:250000 digital geology of Tasmania.

Mineral potential data compiled by K. Morrison M. Econ Geol. (based on Weighted Composite Mineral Potential information compiled for the Tasmanian Regional Forest Agreement).

Mineral deposit information derived from Mineral Resources Tasmania DEPOSITS data base. Data point location has not been verified in every case.

Digital base information from Land Information Services Division, Department of Primary Industries, Water and Environment.

Map produced by the Data Management Branch, Mineral Resources Tasmania using G.I.S. software.

While every care has been taken in the preparation of this data no warranty is given as to the correctness of the information and no liability is accepted for any statement or opinion or for any error or omission. No reader should act or fail to act on the basis of any material contained herein. Readers should consult professional advisers. As a result the Crown in right of the State of Tasmania and its employees, contractors and agents expressly disclaim all and any liability (including all liability from attributable to any negligent or wrongful act or omission) to any person whatsoever in respect of anything done or omitted to be done by any such person in reliance whether in whole or in part upon any of the material in this data. Crown copyright reserved.

