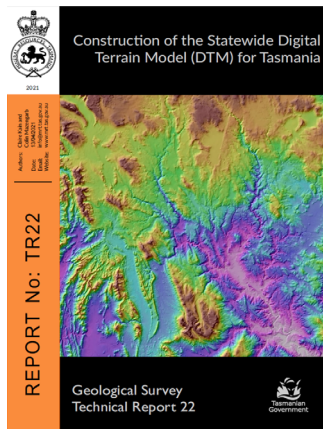


MRT NEWS

The Monthly Newsletter of Mineral Resources Tasmania



MRT publishes technical report on new statewide DTM



In April, MRT published its 22nd technical report: *Construction of the Statewide Digital Terrain Model (DTM) for Tasmania*.

"This report provides the documentation to support the 10 m Digital Terrain Model (DTM). This DTM was generated by Mineral Resources Tasmania and is current at June 2020.

The need for a new DTM has been driven by the availability of superior datasets, particularly Light Detection and Ranging data (LiDAR), and the need for a more accurate model to support a range of regional-scale geoscience projects, specifically the Tasmanian Strategic Flood Mapping Project. The product discussed here is a 10 m statewide DTM (constructed primarily from LiDAR and 10 m photogrammetric contour data).

The construction of the new DTM required considerable effort to collate and manually edit input data, as well as significant computer processing time. The product is designed for general use across government and private sectors and is freely available."

Construction of the Statewide Digital Terrain Model (DTM) for Tasmania can be found and downloaded [here](#).

Four Exploration Release Areas (ERAs) opening for applications

The following ERAs will open for applications on 24 May 2021:

ERA	Location	Former Licence	Former Holder
ERA1158	Brown Mountain	EL3/2013	Petragas Limited
ERA1159	Hibbs Bay	EL7/2018	Accelerate Resources Limited
ERA1160	Birchs Inlet	EL9/2018	Accelerate Resources Limited
ERA1161	Dilston	EL18/2014	ABx4 Pty Ltd

MRT recommends early preparation of ERA applications in order to submit the best possible work program for each area once the application window is open. [Click here for more information](#) on the ERA assessment process and find out how to give yourself the best chance of making a successful submission.

Reports made open file in late March and April

Following is a list of company and MRT reports made open file during March and April:

Title	Report ID	Report No	Report Date
Bessel's Shaft, Contact 120 feet, Tobacco Creek, Lisle: Sandstone. Agitation cyanidation.	119669	UR2021_01	1/01/1937
Report on treatment of gold ore received from H. A. Rayner from the New Golden Gate Mine. Mathinna.	119670	UR2021_02	1/01/1937
Sample of tin ore from Zeehan Tin Development N.L.	119671	UR2021_03	11/08/1937
Ore Dressing Investigation: Sample of crushed tin ore from Renison Bell	119672	UR2021_04	1/09/1937
Analysis of Mt. Cleveland Tin ore received from Mt. Bichoff	119673	UR2021_05	19/11/1937
Recovery of Gold from Mathinna Slimes	119688	UR2021_06	24/12/1937
Ore Dressing Investigation, Flotation test, Renison	119708	UR2021_07	1/01/1938
Ore Dressing Investigation, 4 samples from Renison Bell	119709	UR2021_08	17/03/1938
Gold Extraction Tests - Golden Gate Slimes, Mathinna	119710	UR2021_09	16/07/1938
Research Investigation: Dove Silver Mine (Old Devon Mine)	119711	UR2021_10	28/11/1940
Results of Cyanide Extraction Tests: Chum Creek	119712	UR2021_11	21/02/1941
Investigation of Tailings, Middle Arm, Beaconsfield	119713	UR2021_12	9/09/1942

[List continues...](#)

SUBSCRIBE

[READ MARCH ISSUE](#)