

SURVEY SPECIFICATIONS:

Survey flying date: January 11-14, 2019
Survey operations base: Strahan town
Survey Line spacing: 200-400 meters
Survey Line direction: N 0 E/N 180 E degree
Tie Linw spacing: 500 meters
Tie Line direction: N 90 E/N 270 E degree
Helicopter Mean terrain Clearance: 183 m
Mean Ground Speed: 27 meters/sec
MobileMT airborne system: towed at a mean dist.of 100 m
below the helicopter
Airborne magnetometer bird: towed at a mean dist.of 80 m
below the helicopter

HELICOPTER SPECIFICATIONS:

Helicopter Type: AStar B2
Reg N: VH-ZST
Helicopter Company: Tasmanian Helicopters Pty Ltd.

AIRBORNE INSTRUMENTATION:

Survey Type: Helicopter MobileMT Electromagnetic & Magnetic
EGL PC-104 based Data Acquisition System
EGL GPS Navigation Computer/Pilot Steering Indicator
GPS Receivers (2): with Linx RXM-GNSS-TM GPS Engines
GPS Receivers Location: One on the helicopter, one on mag bird
Radar Altimeter: Smartmicro model UMRR-0A Radio Altimeter

AIRBORNE ELECTROMAGNETIC SYSTEM:

Electromagnetic system: EGL MobileMT
Type of measurement: Total field by three orthogonal coils
Digitizing rate: 2000 Hz
Frequencies extracted (Hz): 56,71,89,112,141,178,224,282,355,
4511,5683,7160,9022,11366,14321

Sampling Rate: 0.4 sec

AIRBORNE MAGNETOMETER:

Magnetometer: Geometrics G822A Cesium Magnetometer
Magnetometer Sensitivity: 0.001 nT

Sampling Rate: 10 Hz

GROUND INSTRUMENTATION:**MAGNETIC BASE STATION:**

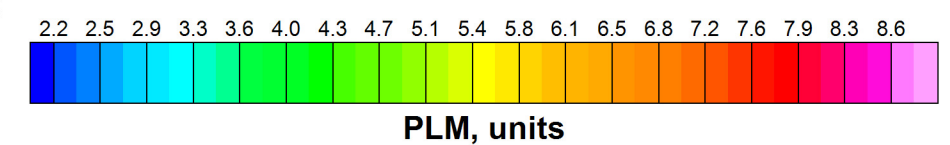
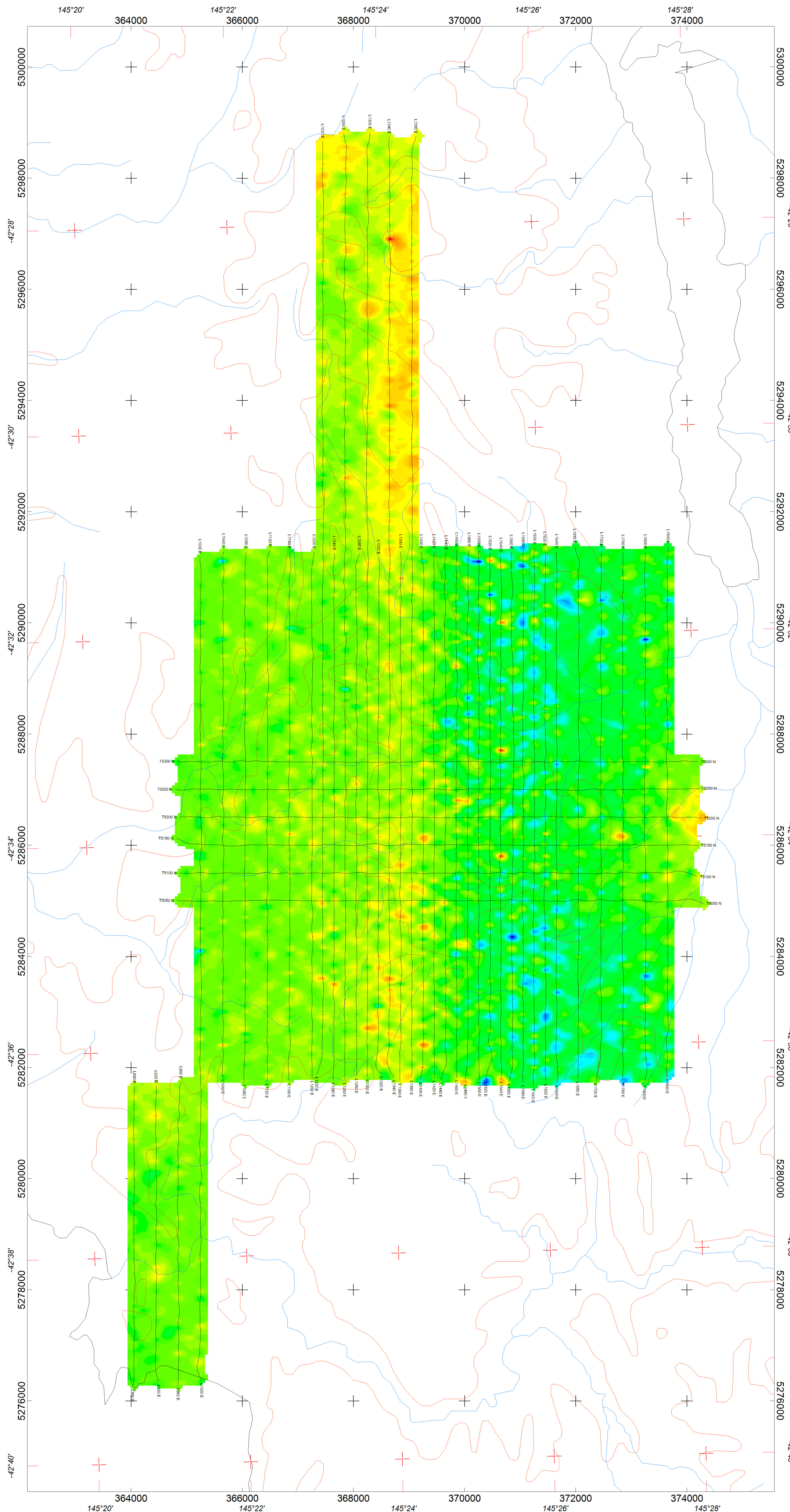
Magnetometer: GSM-19
Base Station Location: Lat: -42.562967 Long: 145.4119817

EM BASE STATION:

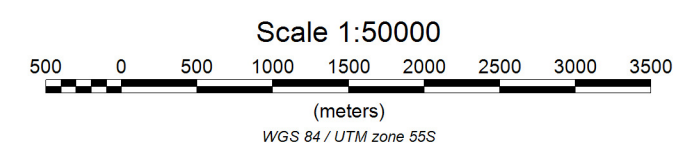
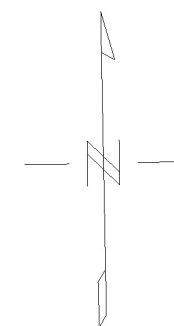
Two orthogonal pairs of grounded electrical lines
Lines length: 60 metres each line
Lines orientation: direction X – NS, Y – EW
Base Station Location: Lat: Lat: -42.562967 Long: 145.4119817

MAP PROJECTION:

Datum: WGS84
Projection: Universal Transverse Mercator
Central Meridian: 147 degree E (Zone 55S)
Central Scale Factor: 0.9996
False Easting/Northing: 500,000m/0m



PLM, units



Accelerate Resources Limited

**Mt Read Project
Tasmania, Australia**

EGL MobileMT system
Powerline monitor (PLM)

flown 11-14 January, 2019
(+1)-647-402-8436, info@expertgeophysics.com
www.expertgeophysics.com
Expert Geophysics Limited