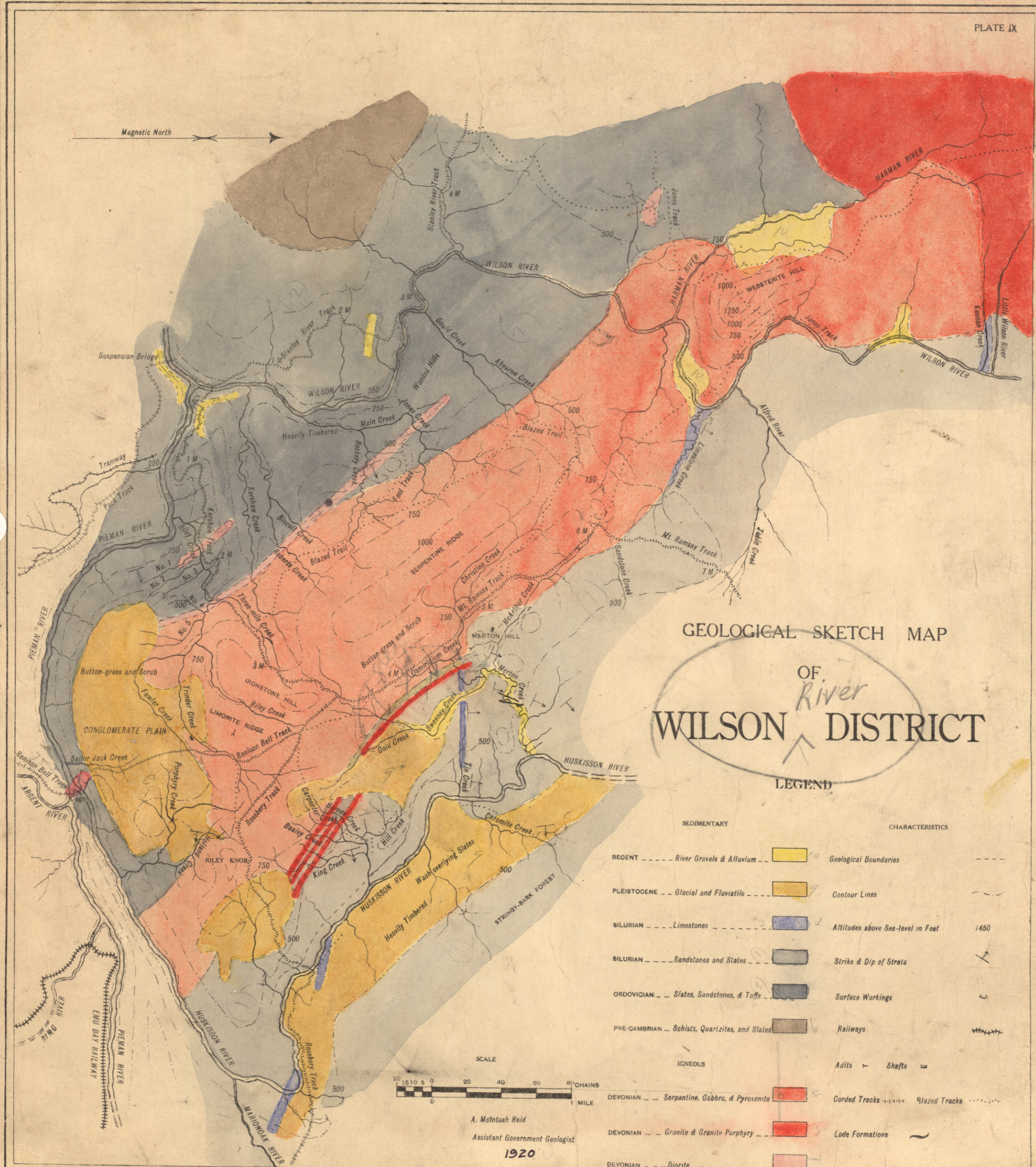


Magnetic North

101 B

63

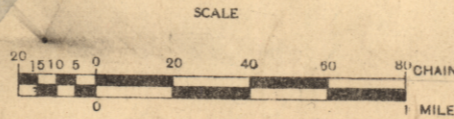
5 cm



GEOLOGICAL SKETCH MAP
 OF
River
WILSON DISTRICT

LEGEND

SEDIMENTARY	CHARACTERISTICS
RECENT - - - - - River Gravels & Alluvium	Geological Boundaries
PLEISTOCENE - - - - - Glacial and Fluvialite	Contour Lines
BILURIAN - - - - - Limestones	Altitudes above Sea-level in Feet
BILURIAN - - - - - Sandstones and Slates	Strike & Dip of Strata
ORDOVICIAN - - - - - Slates, Sandstones, & Tuffs	Surface Workings
PRE-CAMBRIAN - - - - - Schists, Quartzites, and Slates	Railways
IGNEOUS	Adits & Shafts
DEVONIAN - - - - - Serpentine, Gabbro, & Pyroxenite	Corded Tracks & Blazed Tracks
DEVONIAN - - - - - Granite & Granite Porphyry	Lode Formations
DEVONIAN - - - - - Diorite	



A. McIntosh Reid
 Assistant Government Geologist
 1920

Photo Algraphed by John Vail Government Printer Hobart Tasmania.

101 B/43, 50