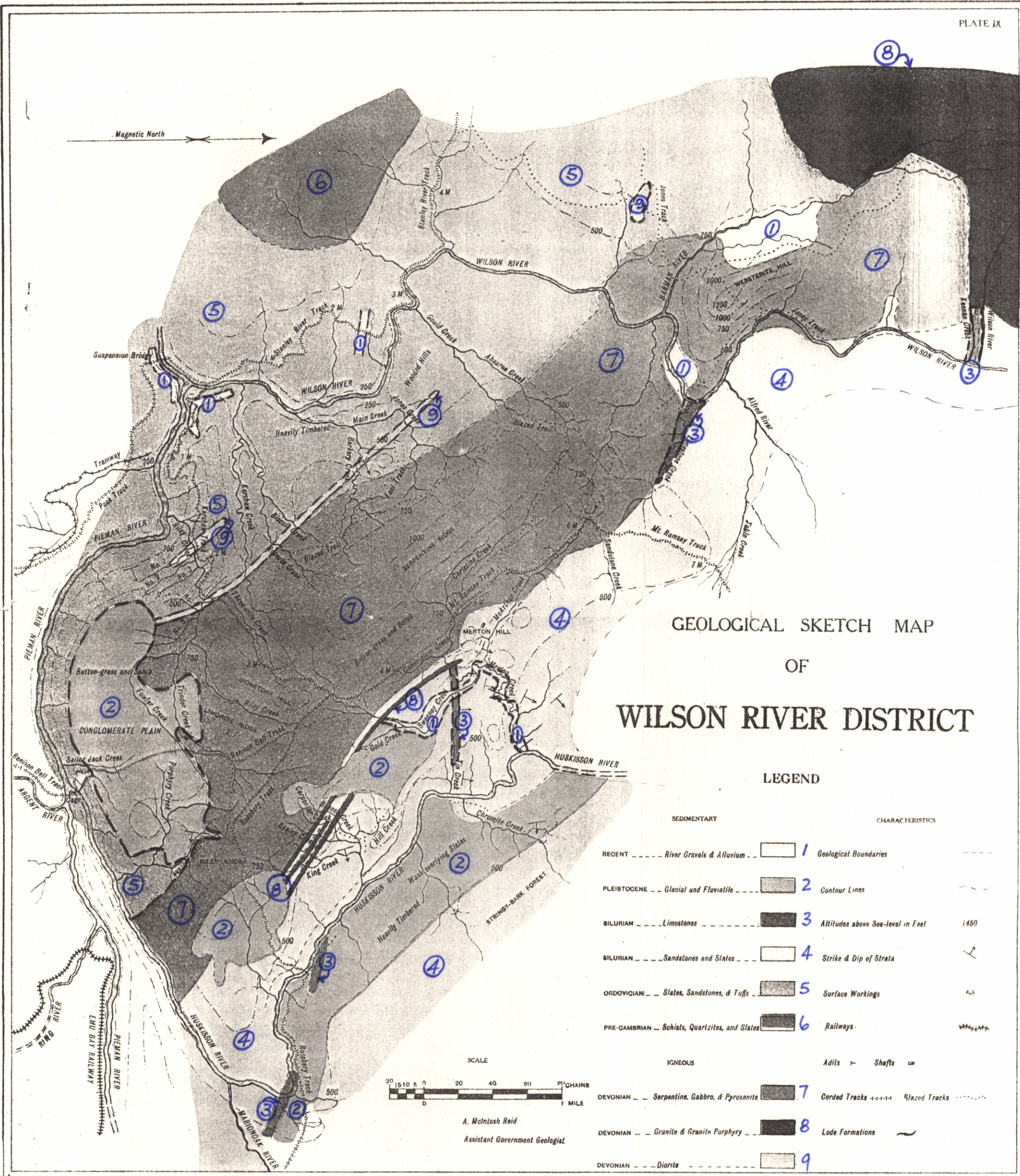


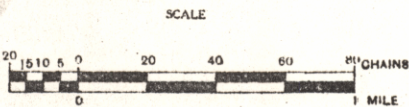
5 cm



GEOLOGICAL SKETCH MAP
OF
WILSON RIVER DISTRICT

LEGEND

SEDIMENTARY	CHARACTERISTICS
RECENT - River Gravels & Alluvium	1 Geological Boundaries
PLEISTOCENE - Glacial and Fluvialite	2 Contour Lines
BILURIAN - Limestones	3 Altitudes above Sea-level in Feet
BILURIAN - Sandstones and Slates	4 Strike & Dip of Strata
ORDOVIGIAN - Slates, Sandstones, & Tufts	5 Surface Workings
PRE-CAMBRIAN - Schists, Quartzites, and Slates	6 Railways
IGNEOUS	Adits > Shafts
DEVONIAN - Serpentine, Gabbro, & Pyroxenite	7 Corded Tracks - - - - - Blazed Tracks
DEVONIAN - Granite & Granitic Porphyry	8 Lode Formations
DEVONIAN - Diorite	9



A. McIntosh Reid
Assistant Government Geologist

Photo Agravished. by John Vasil Government Printer Hobart Tasmania.