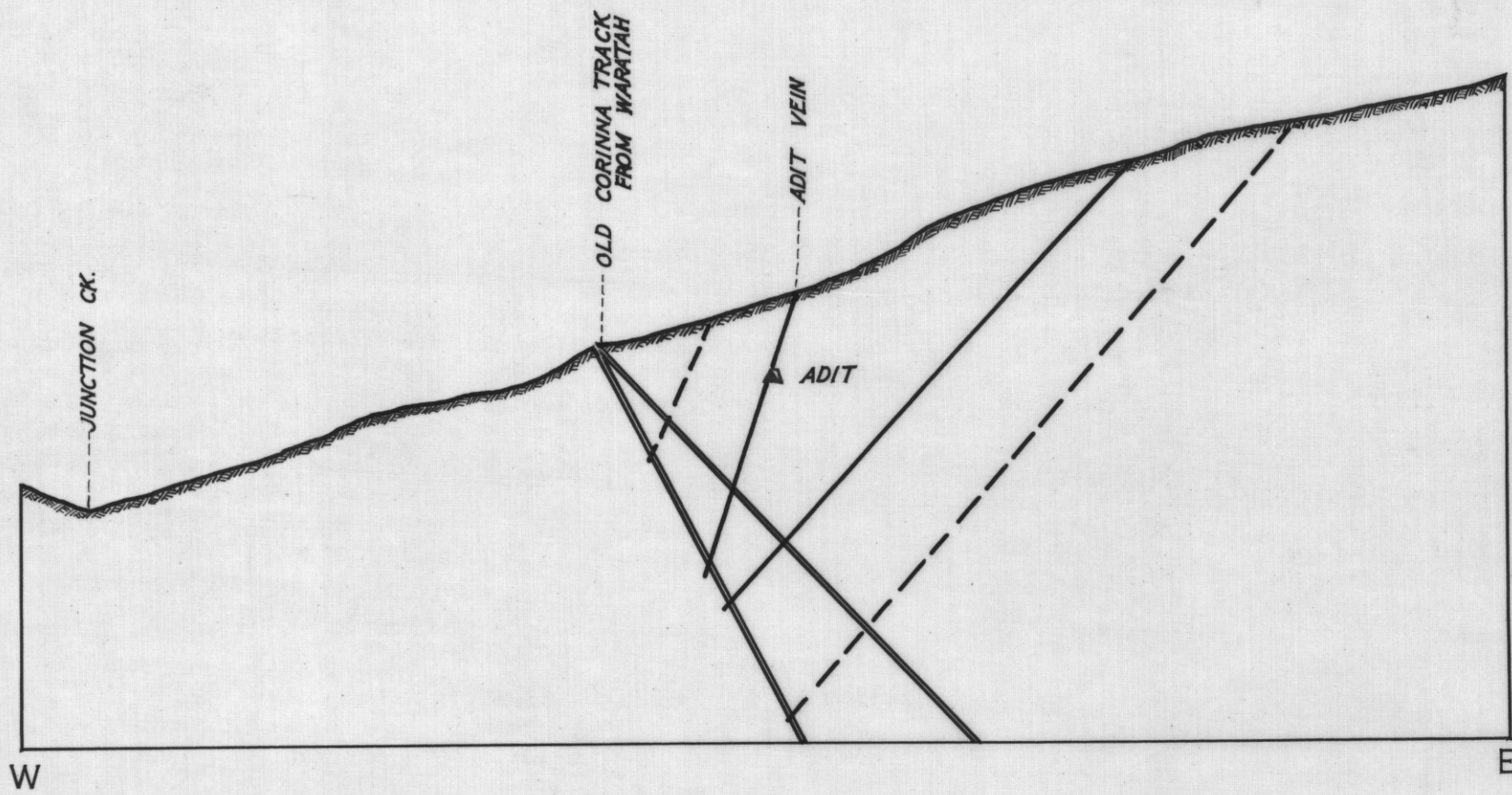
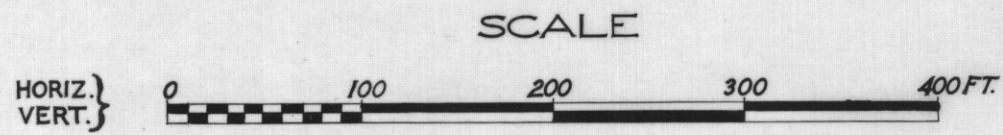


5 cm

# PROPOSED D.D. HOLES ANTIMONIAL VEINS WEST BISCHOFF



## SECTION 1

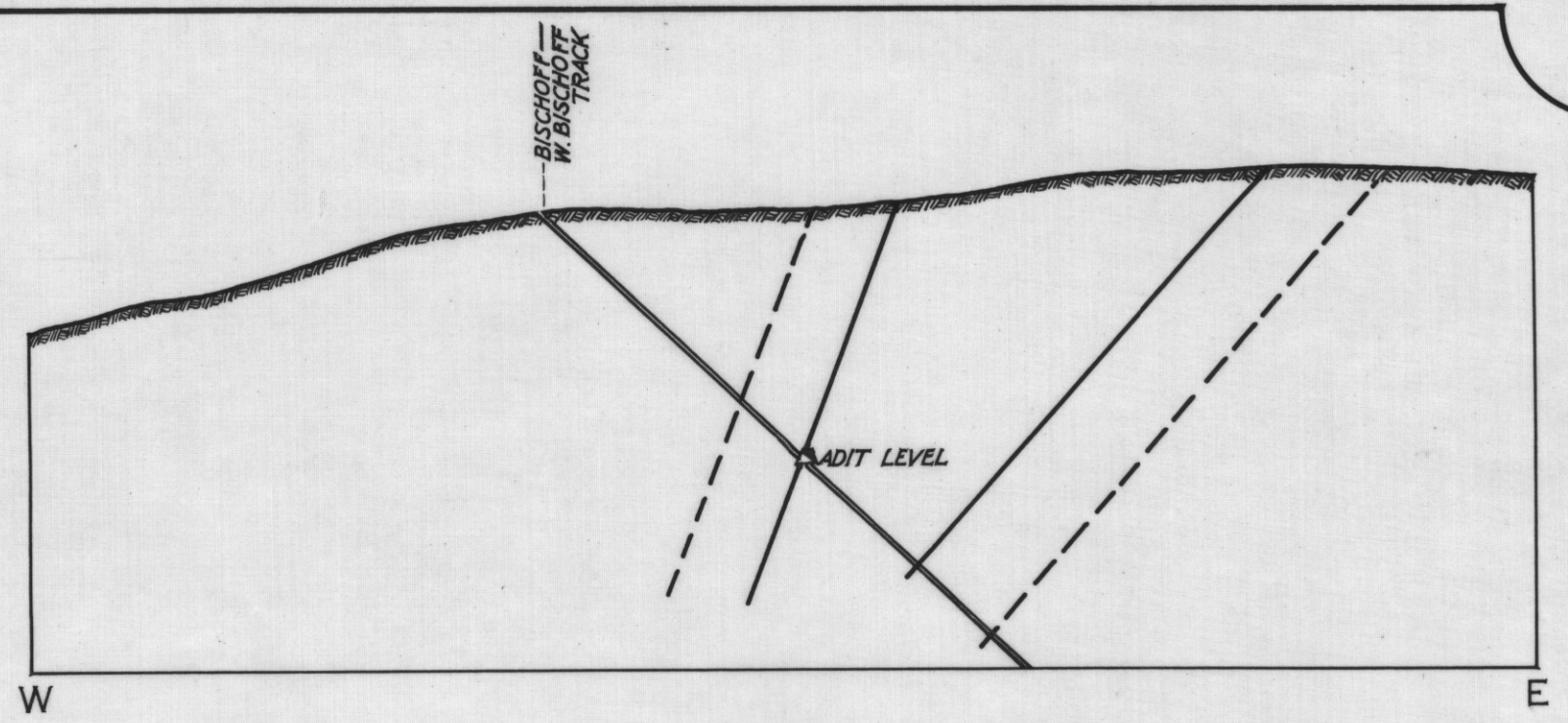
BORE FROM POSITION 160' ALONG TRACK FROM ADIT  
BORE 45° DEP. SHOULD CUT 4 VEINS WITHIN 230', CUTTING ADIT VEIN 60' BELOW ADIT.  
BORE 60° DEP. SHOULD CUT 4 VEINS WITHIN 240', CUTTING ADIT VEIN 100' BELOW ADIT.

### - LEGEND -

- POSSIBLE POSITION OF OUTCROPPING VEINS
- PROBABLE POSITION OF VEINS REPORTED FURTHER NORTH
- PROPOSED D.D. HOLES

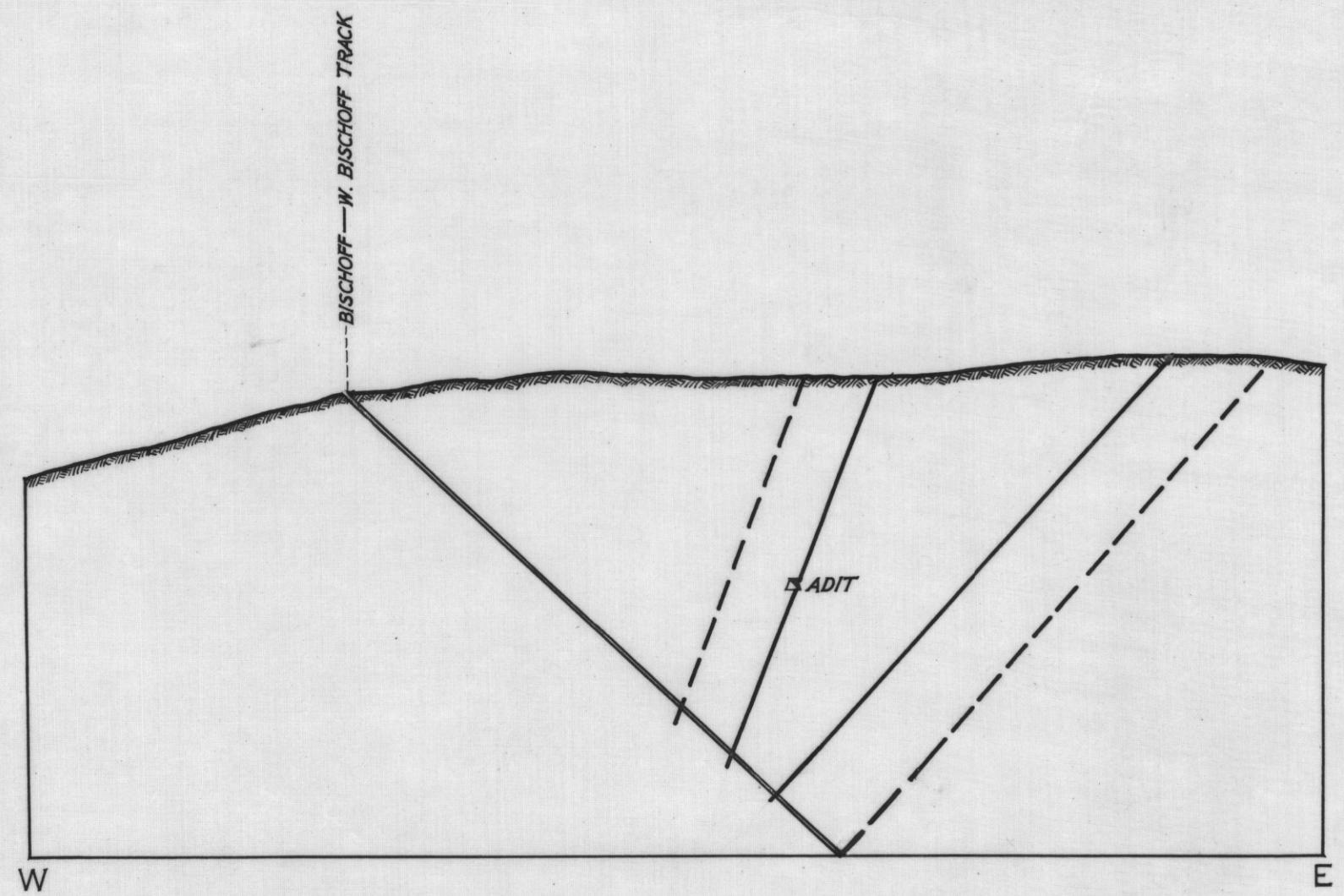
*H. G. Reid* M.Sc.

CHIEF GEOLOGIST  
17. 3. 48



## SECTION 2

BORE FROM POSITION 190' WEST FROM 2<sup>ND</sup> OUTCROP ON TRACK FROM WARATAH  
BORE 45° DEP. SHOULD CUT 4 VEINS WITHIN 320', CUTTING ADIT VEIN AT ADIT LEVEL.



## SECTION 3

BORE FROM POSITION 360' WEST FROM 2<sup>ND</sup> OUTCROP ON TRACK FROM WARATAH  
BORE 42° DEP. SHOULD CUT 4 VEINS WITHIN 420', AND CUT ADIT VEIN IN 320'.