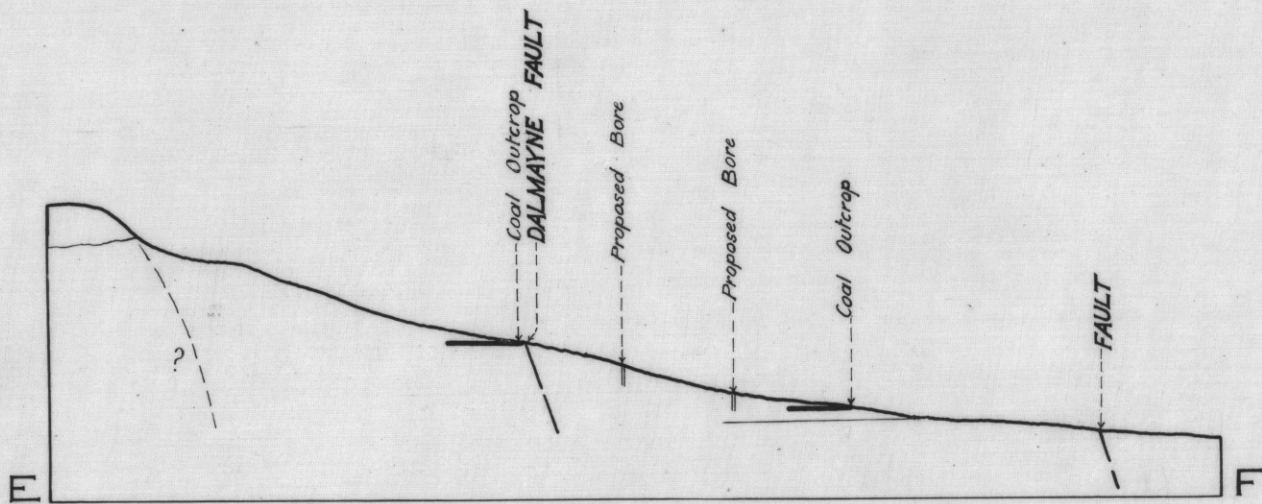
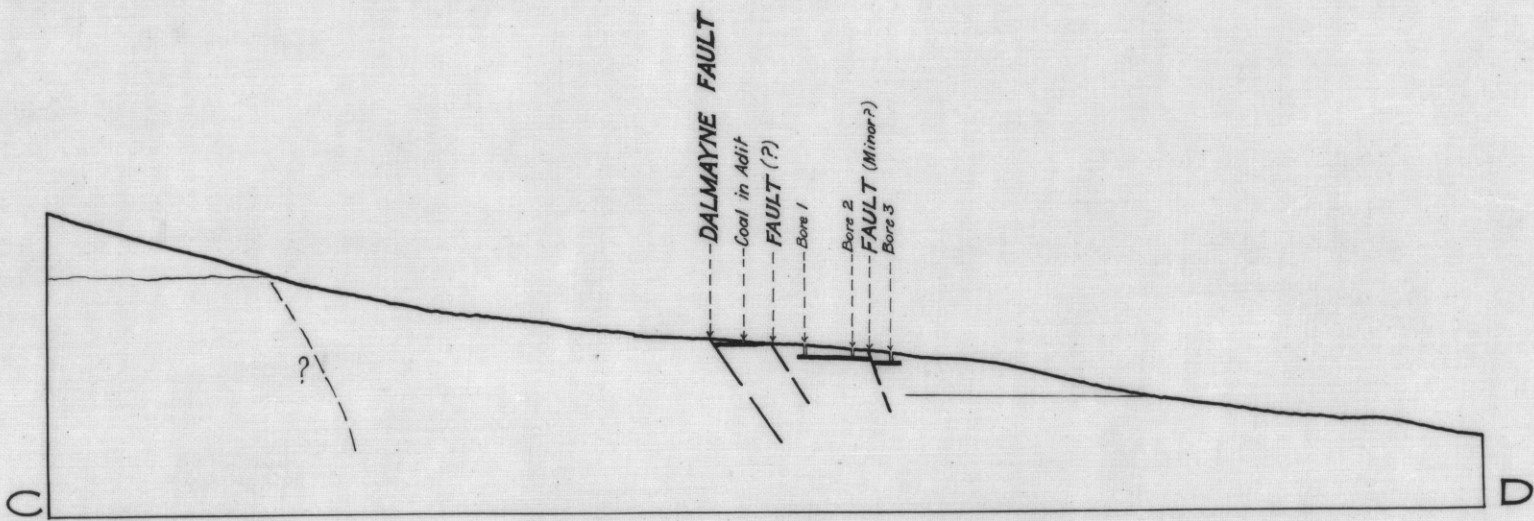
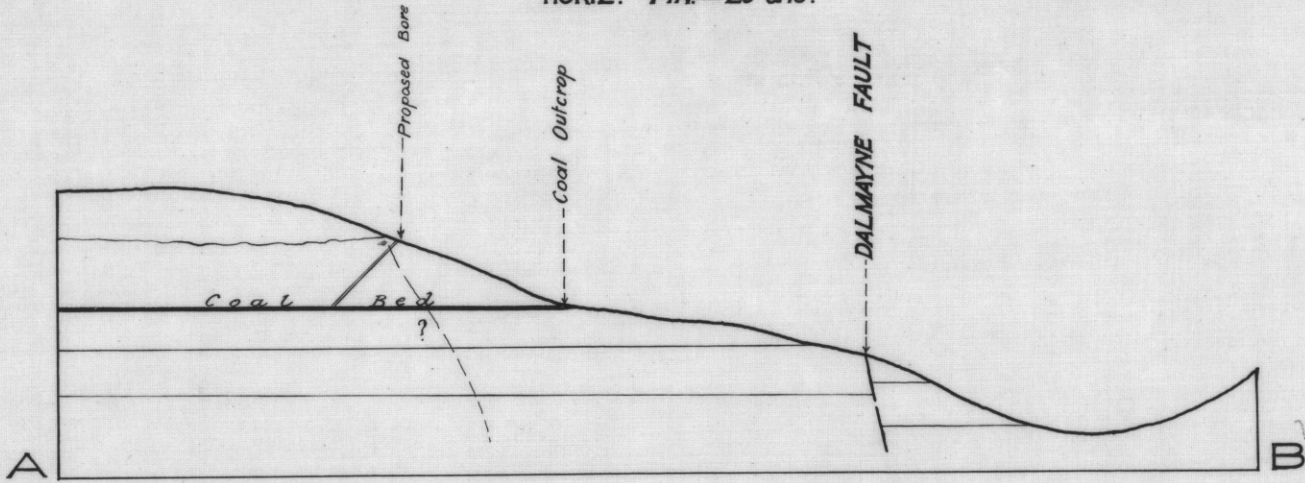


5 cm

SECTIONS DALMAYNE COALFIELD

SCALES

VERT. 1 IN. = 20 CHS.
HORIZ. 1 IN. = 25 CHS.



— LEGEND —

SEDIMENTARY

TRIAS—JURA SANDSTONES & SHALES	<input type="checkbox"/>
PERMO—CARBONIFEROUS LIMESTONES & MUDSTONES.	<input type="checkbox"/>
CAMBRO—ORDOVICIAN SLATES	<input type="checkbox"/>
IGNEOUS	
UPPER MESOZOIC DOLERITE	<input type="checkbox"/>

Agurkeid M.Sc.

CHIEF GEOLOGIST
8 . 4 . 48

RJK