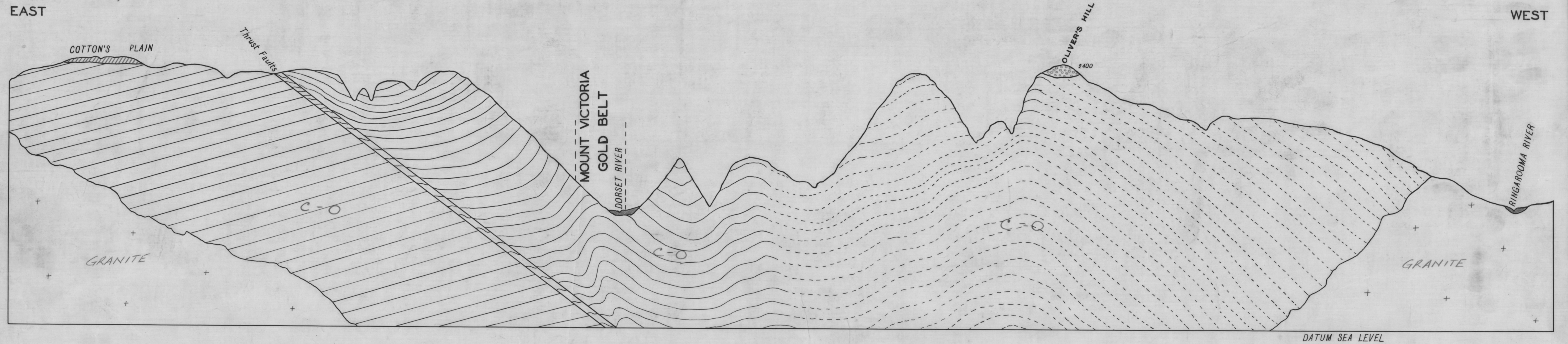


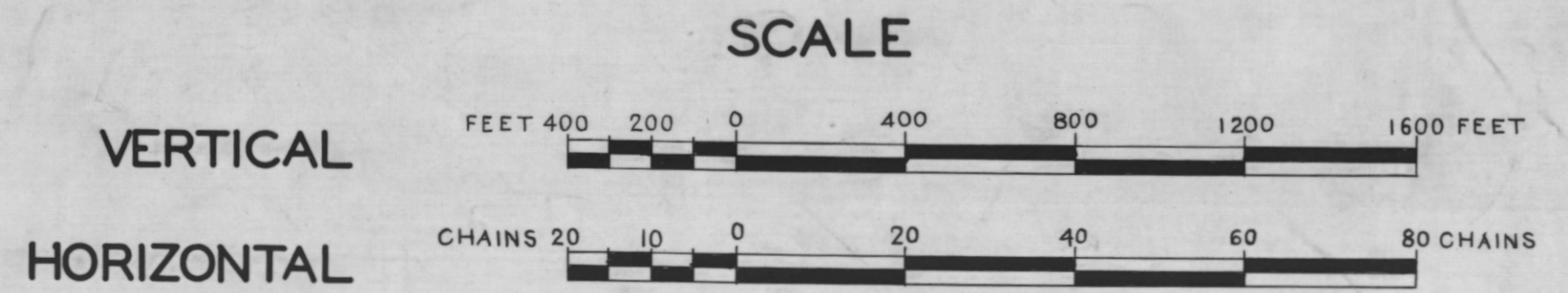
GEOLOGICAL SKETCH SECTION
OF
MOUNT VICTORIA GOLDFIELD



108 C

117

5 cm



LEGEND

SEDIMENTARY		
RECENT	Alluvium	[Solid grey box]
PERMO-CARBONIFEROUS	Sandstones & Mudstones	[Diagonal hatching]
CAMBRO-ORDOVICIAN	Mathinna Slates and Sandstones	[Wavy lines]
IGNEOUS		
TERTIARY	Basalt	[Stippled box]
DEVONIAN	Granite	[Box with '+' and 'GRANITE']

Loftus Hills. M.B.E., D.Sc.
Government Geologist
1923.

108C/40

9-6430