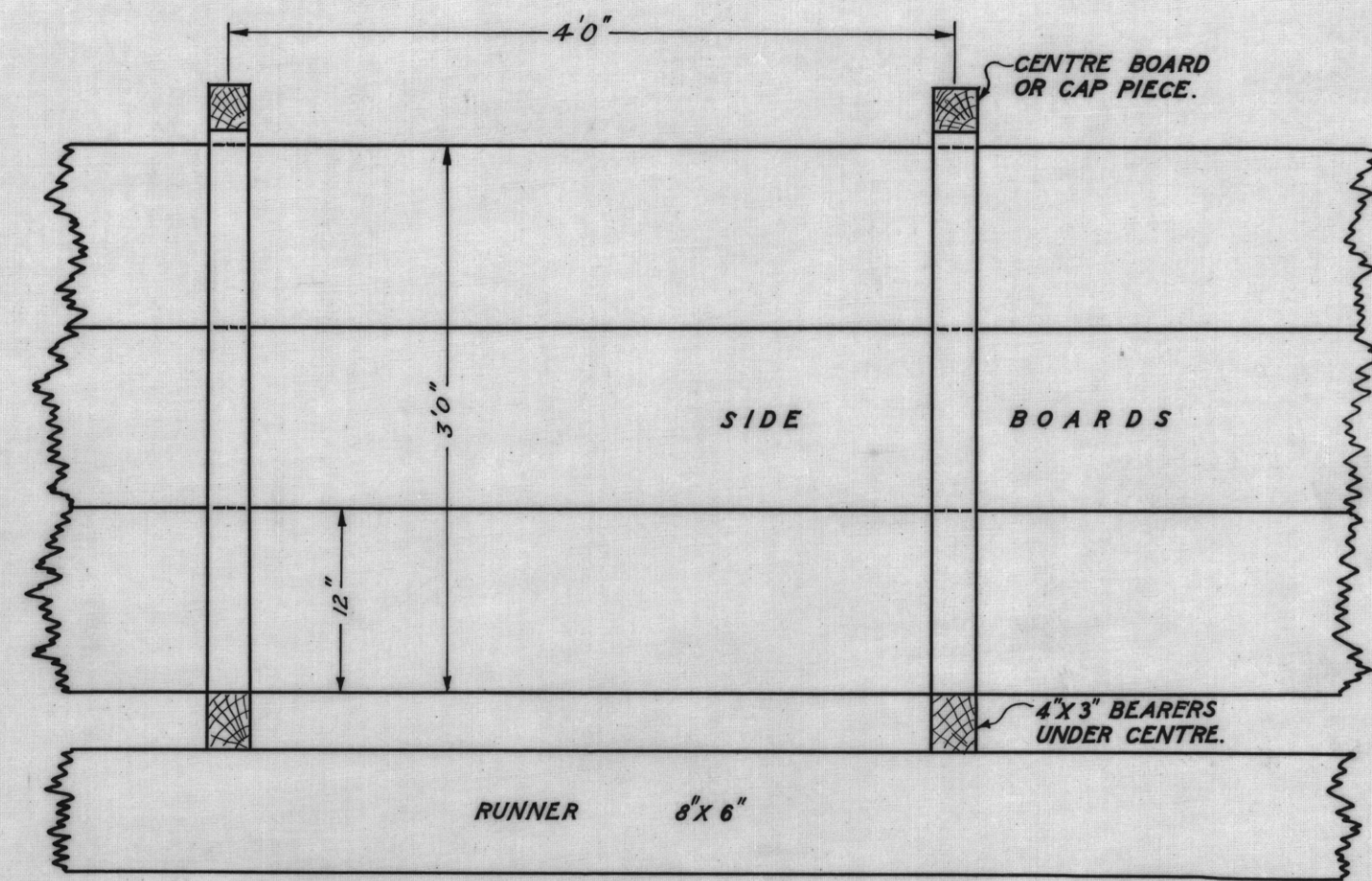


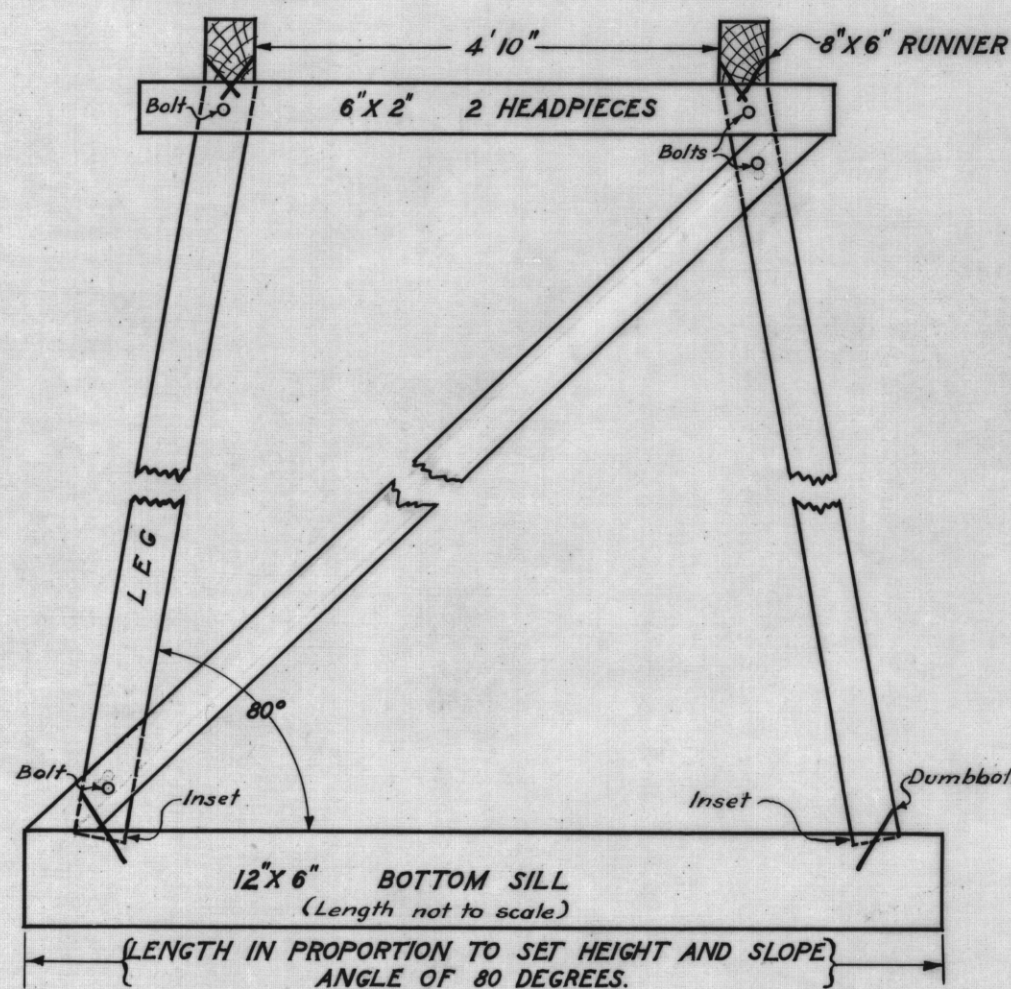
FLUME CROSS SECTION

SCALE: 1 IN.=1 FT.



FLUME SIDE VIEW

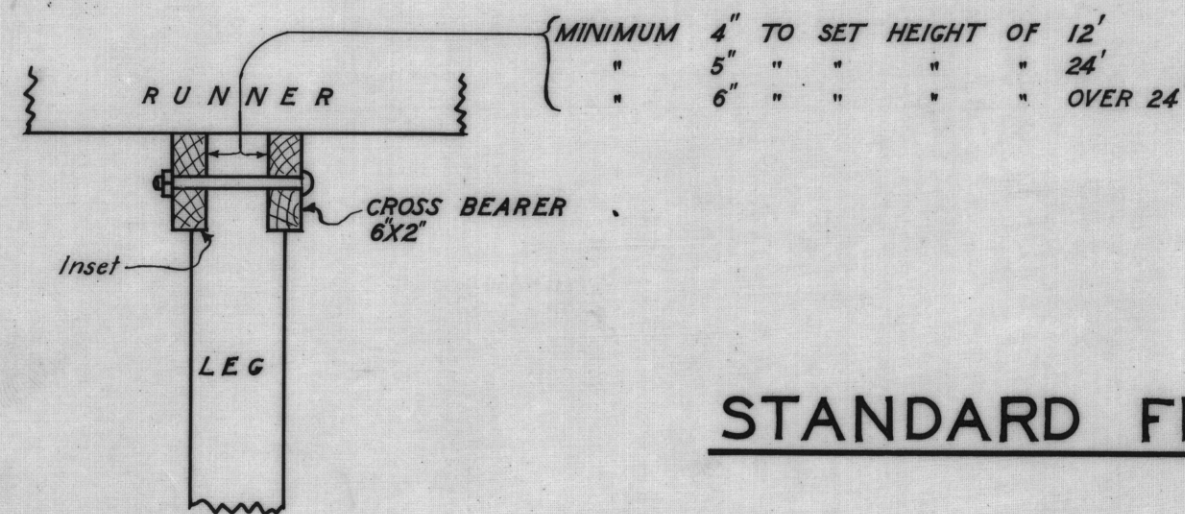
SCALE: 1 IN.=1 FT.



CROSS SECTION OF TRESTLE

(SAWN TIMBER)

SCALE: 1 IN.=2 FT.



SIDE VIEW TOP TRESTLE

SCALE: 1 IN.=1 FT.

STANDARD FLUME & TRESTLE

CASCADE-BRANXHOLM RACE

SAWN D.A.R. TIMBER SET FOR HEIGHTS OF UP TO 12 FEET FROM TOP OF SILL TO TOP OF HEADSTOCK. BOLTS $\frac{5}{8}$ WITH METAL WASHERS.

IN THE CASE OF HIGHER SETS LARGER LEGS AND SILLS ARE REQUIRED AND ROUND LEGS AND SILLS MAY BE USED ACCORDING TO SPECIFICATIONS BUT THE SILLS MUST BE SHAPED ON ONE SIDE TO PREVENT ROLL AND FASHIONED ON THE OTHER SIDE FOR THE NEAT RECEPTION AND JOINING OF THE LEGS, THE INSET TO BE NOT LESS THAN $\frac{1}{2}$ INCHES, AND BOLTS WITH METAL WASHERS, TO BE $\frac{3}{4}$ INCH IN DIAMETER.

DIAGONAL STAYS SHALL BE AS SPECIFIED WITH THE RE-ARRANGEMENT PRESCRIBED FOR SETS HIGHER THAN 12 FEET. (SEE SPECIFICATIONS)

SILL MEMBERS ARE NOT PLOTTED IN SCALE LENGTHS. THEY SHALL ADEQUATELY COVER LEGS AND BE OF SUFFICIENT LENGTHS ACCORDING TO SET HEIGHTS TO PROVIDE THE SLOPE ANGLE OF 80° AND EXTEND NOT LESS THAN 6 INCHES BEYOND THE OUTSIDE OF THE LEGS.