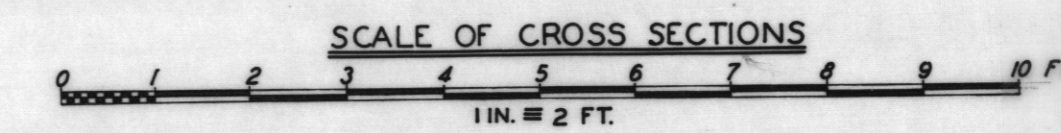
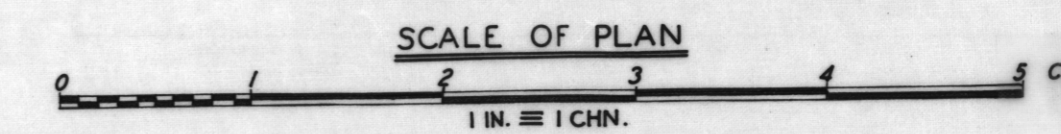
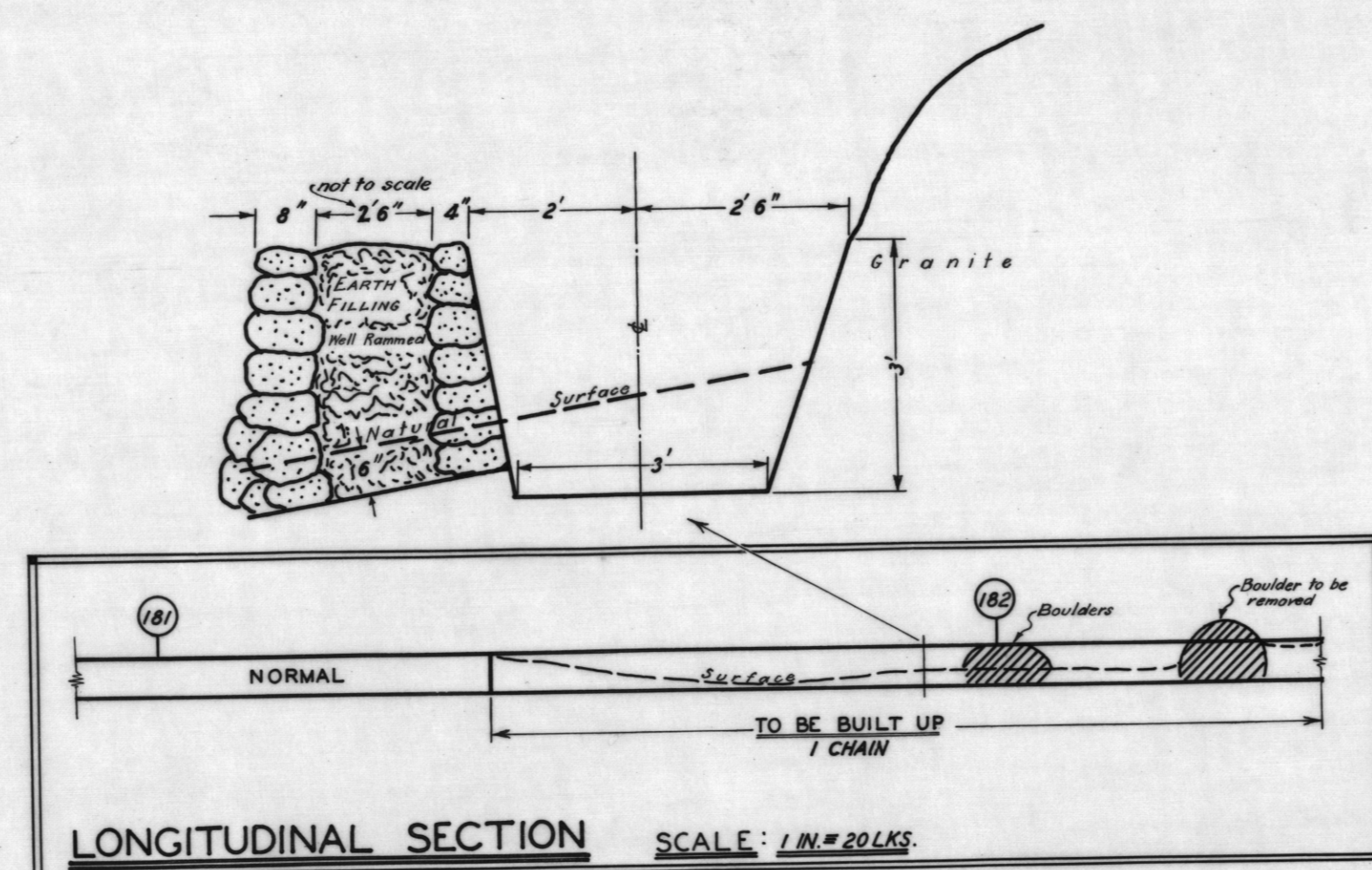
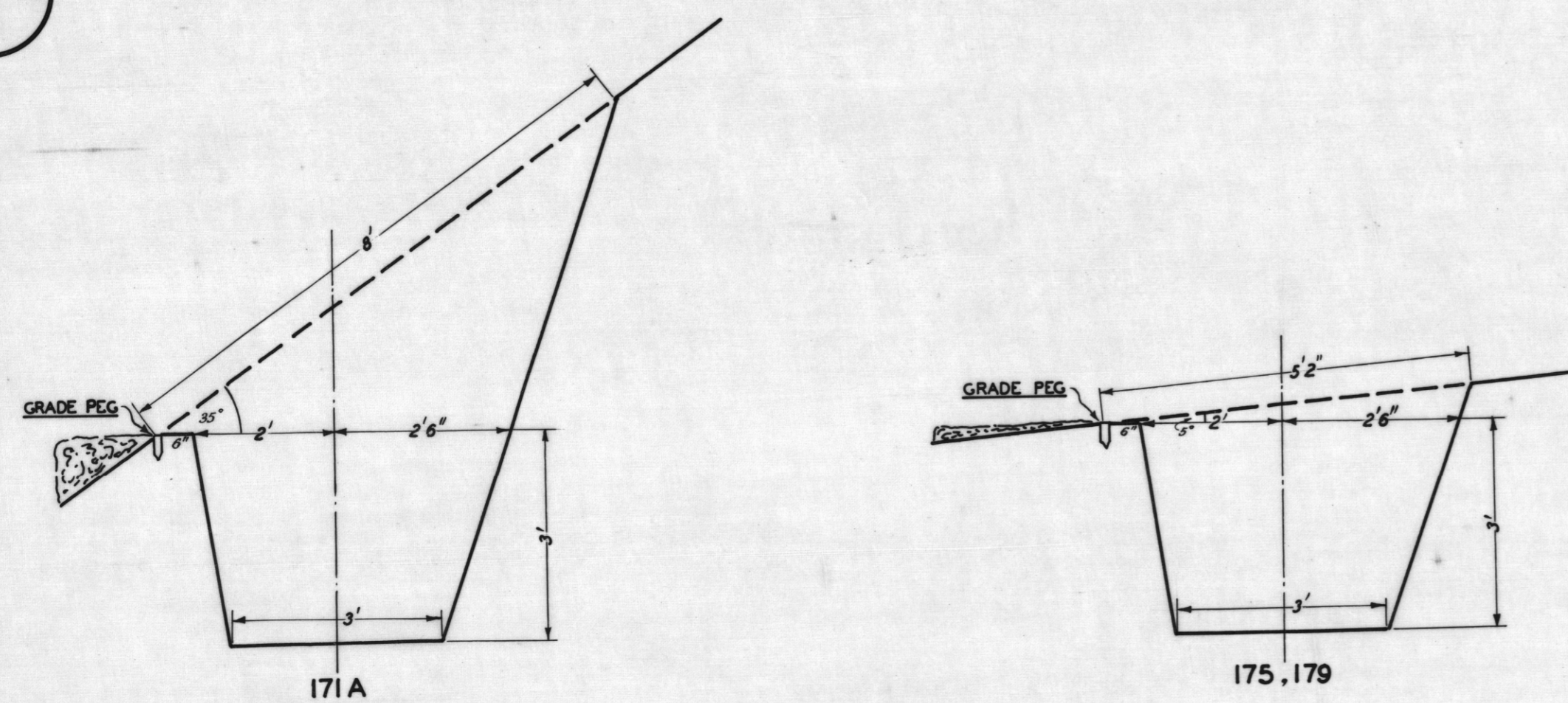


PROPOSED CASCADE — BRANXHOLM RACE

SECTION 5 (171A-210 CHAINS)



DISTANCE 188-190 = 1 CHAIN
 GRANITE BOULDERS
 TEST HOLES
 CHAINAGE PEGS

James D. Hughes
 GEOLOGIST
 1949

3 3/8 chains.
 Average slope 15°
 Granite - Mostly earth and weathered granite but many boulders.
 Building for 1 chain round large granite outcrop - removal of large boulders at 182 ch.

Section begins at end of flume over Black Creek. There is no station 189 - distance 188-190 equals 1 chain.

