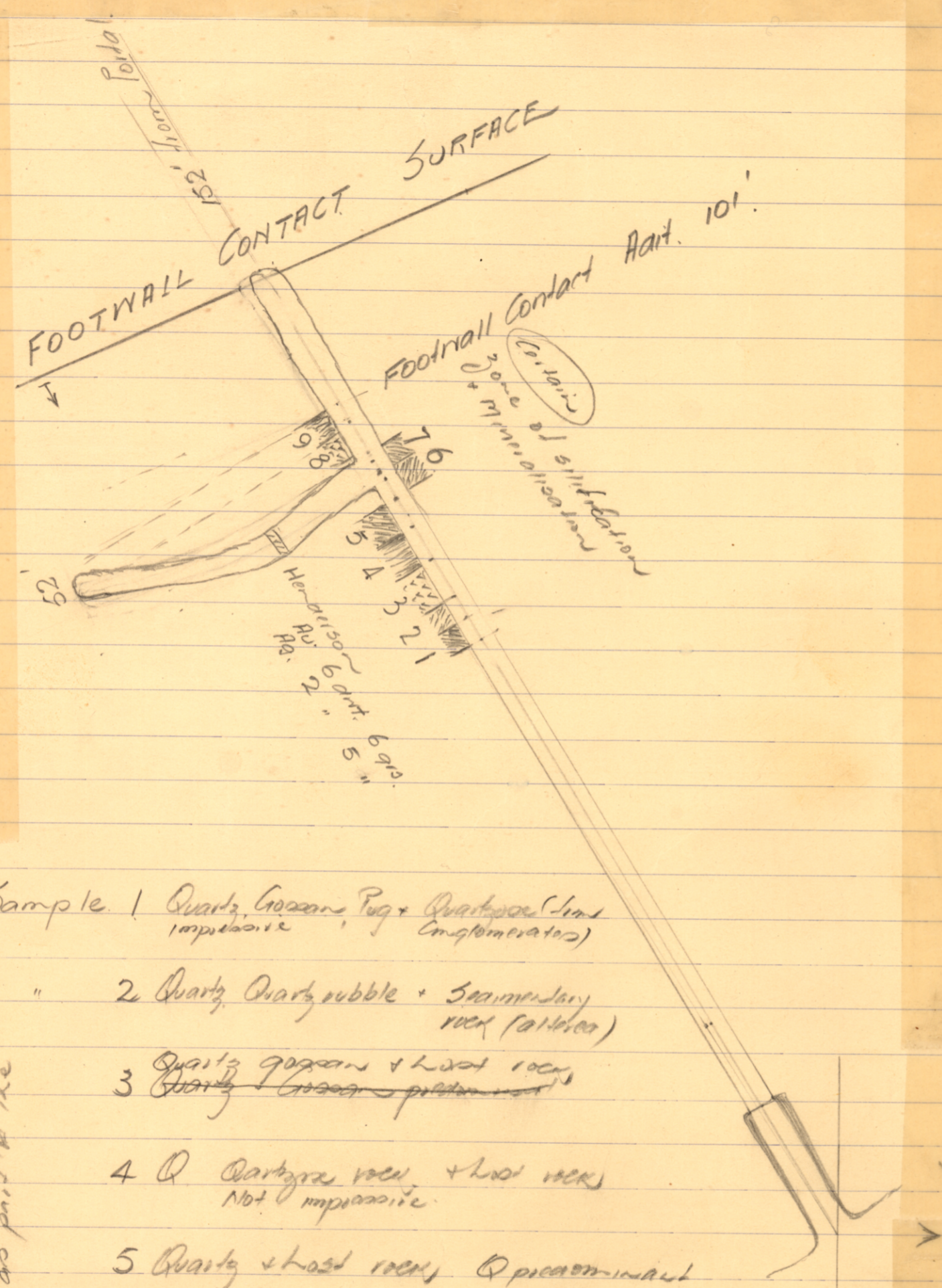


STORM-MOUNT PROSPECT NEAR ULVERSTONE

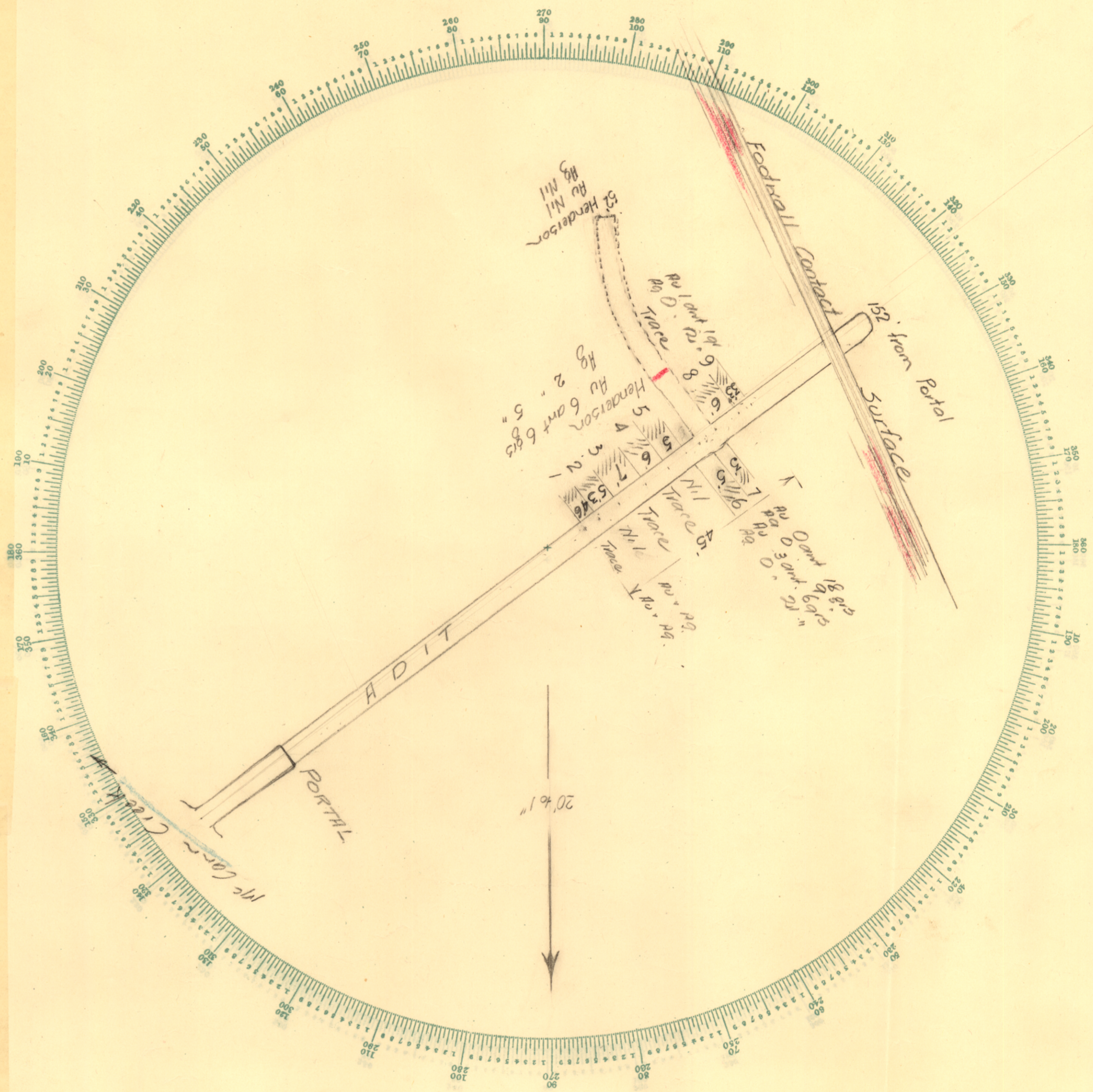
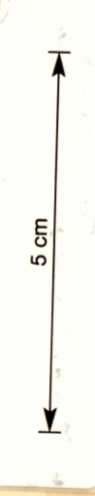
J. D. CAMPBELL

Nov 1949



- Sample 1 Quartz, Gossans, Peg + Quartzose (not impressive) (Conglomerate)
- 2 Quartz, Quartz rubble + Secondary rock (alteration)
- 3 Quartz gossans + host rock (Quartz gossans prominent)
- 4 Q Quartzose rock + host rock (Not impressive)
- 5 Quartz + host rock (Quartz prominent)
- 6 Quartz, gossans + Pink host rock
- 7 Quartz + Gossans prominent (Physically + structurally an impressive sample)
- 8 Quartz + veinlets of quartz in host rock (not impressive)
- 1132-37 9 Quartz veins in host rock.

Has rock principally a pink siliceous rock, no quartz in the section.



1132 B

190