

5 cm

OLD SITE OF HUTTON'S CLAYPIT

THOMAS STREET

(UNFORMED)

(UNFORMED)

ROSE LANE

LILLY STREET

A R P
O 3 8.66

A R P
I O 24.1

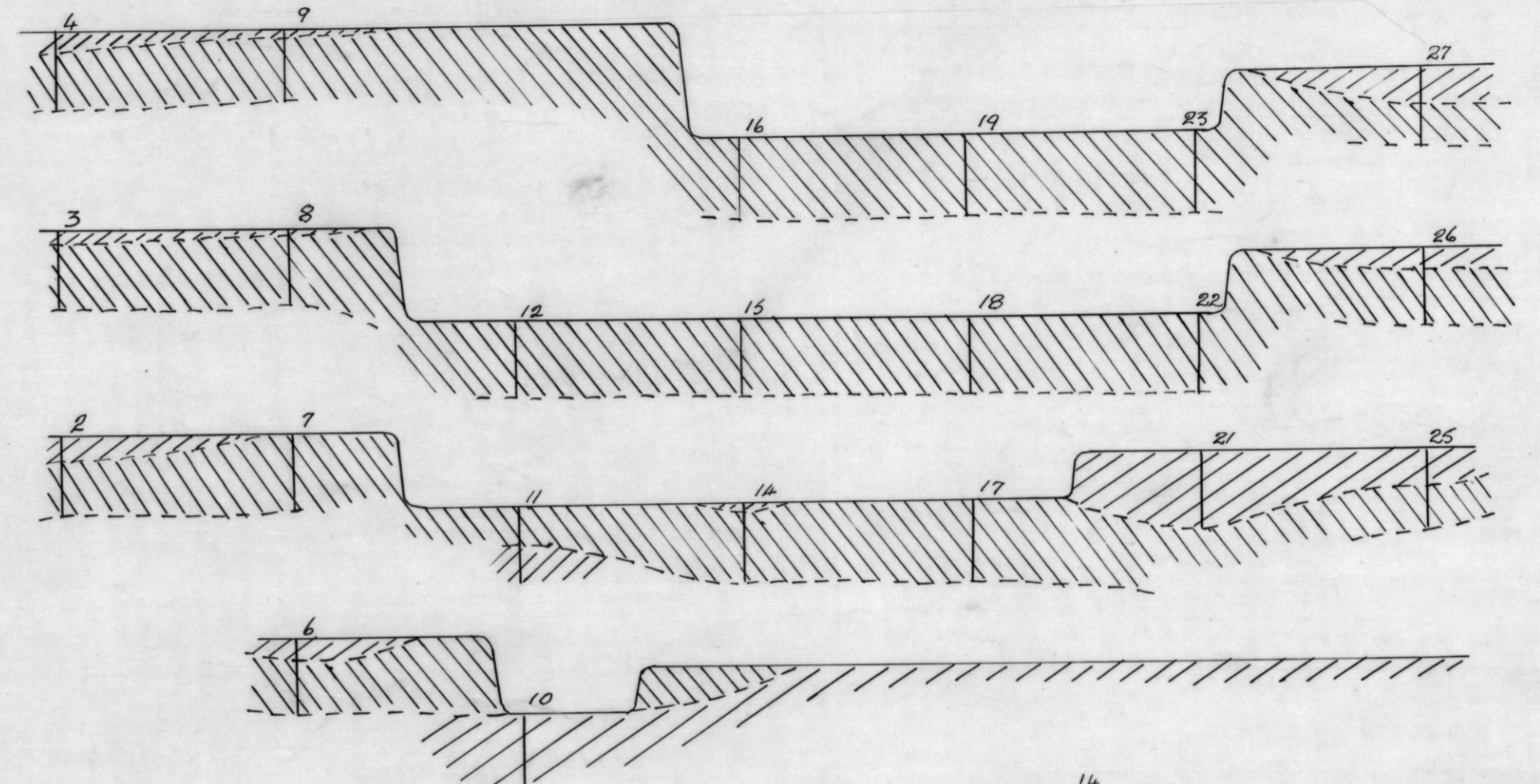
CLAY REMOVED FROM THIS AREA

PRESENT PIT

GLEN

DHU

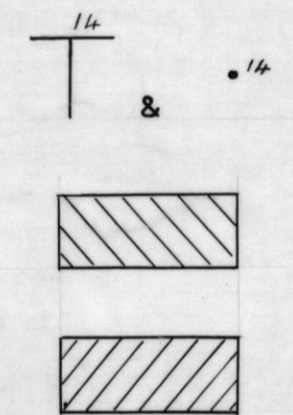
STREET



BOREHOLES

KNOWN EXTENT OF GOOD CLAY

KNOWN EXTENT OF POOR CLAY



M. P. Doyle

B.SC.(NZ) A.M.A.I.M.M.
GEOLOGIST
24 AUG. 1950

PLAN NO.

1156-39

MCHUGH BROS. PTY LTD LAUNCESTON

PLAN AND SECTIONS OF CLAYPIT

DEPARTMENT OF MINES - TASMANIA

SCALES

PLAN

1 IN = 40 FT

SECTIONS

1 IN = 20 FT