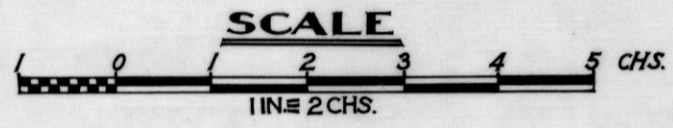


5 cm

BORE PLAN

LIME SAND DEPOSIT
JERUSALEM PLAINS - BRIDPORT

(MILLS BROS.)

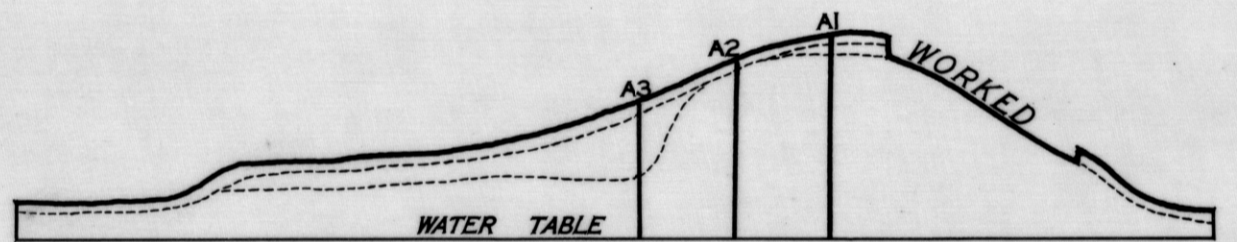
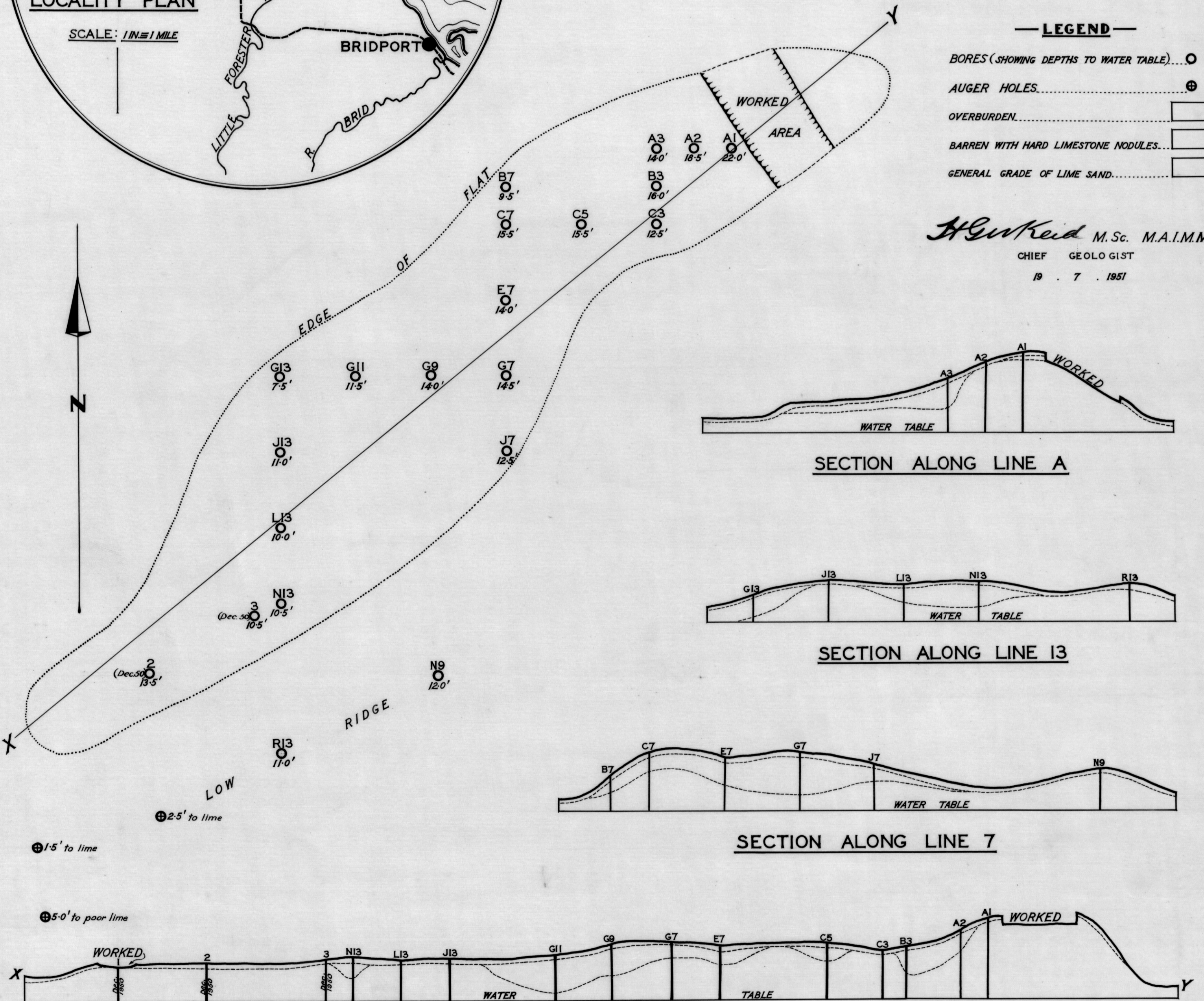
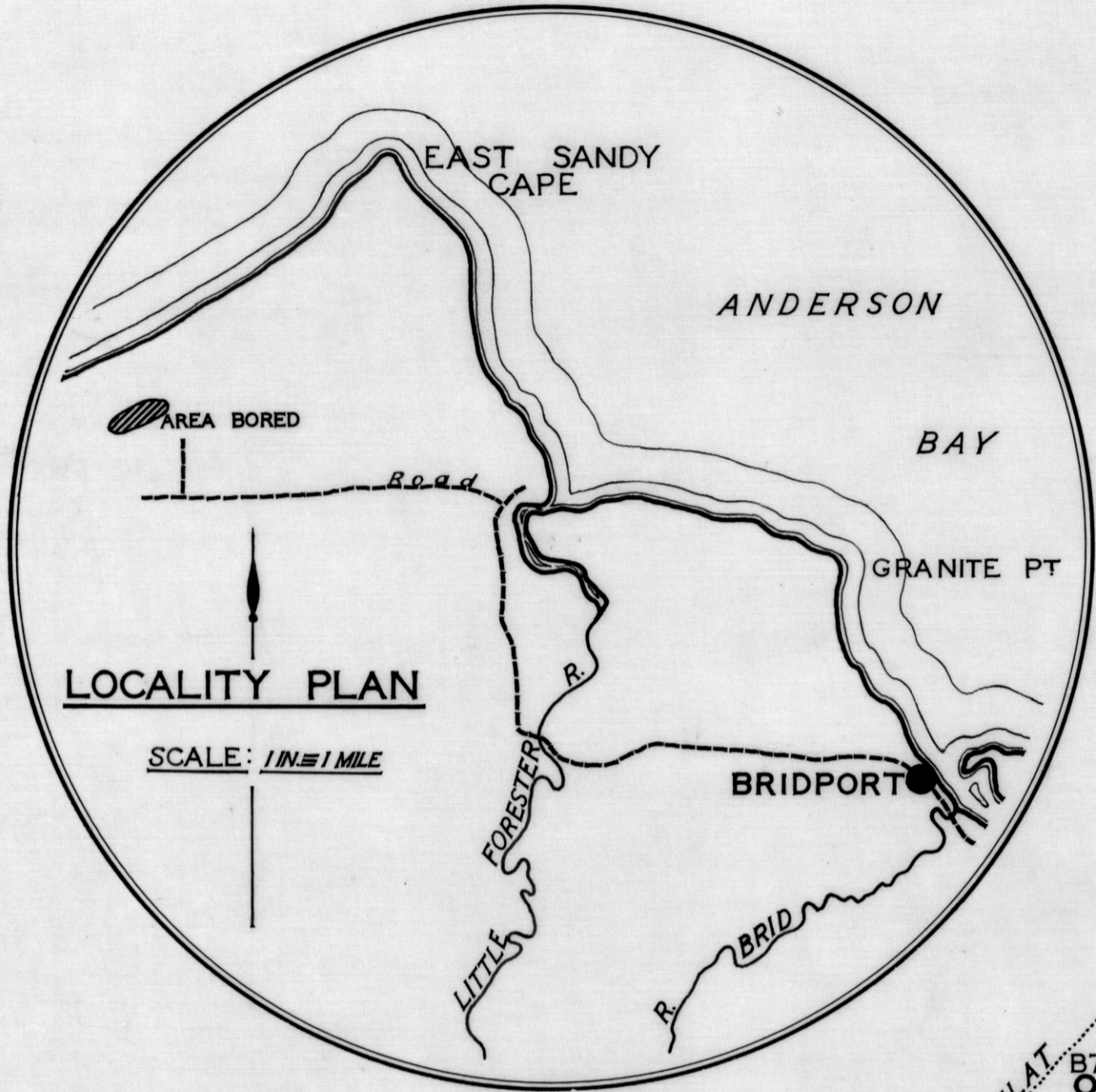


SECTION SCALES
HORIZ. 1 IN = 2 CHS.
VERT. 1 IN = 20 FT.

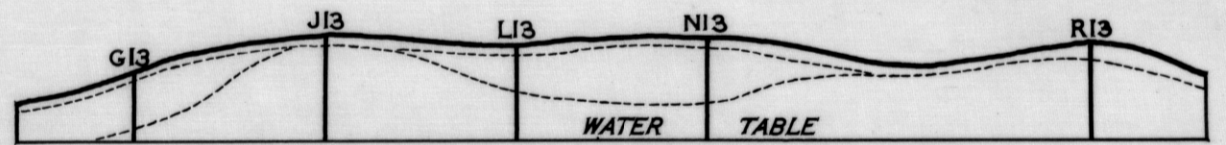
LEGEND

- BORES (SHOWING DEPTHS TO WATER TABLE) ... ○
- AUGER HOLES ... ⊕
- OVERBURDEN ... []
- BARREN WITH HARD LIMESTONE NODULES ... []
- GENERAL GRADE OF LIME SAND ... []

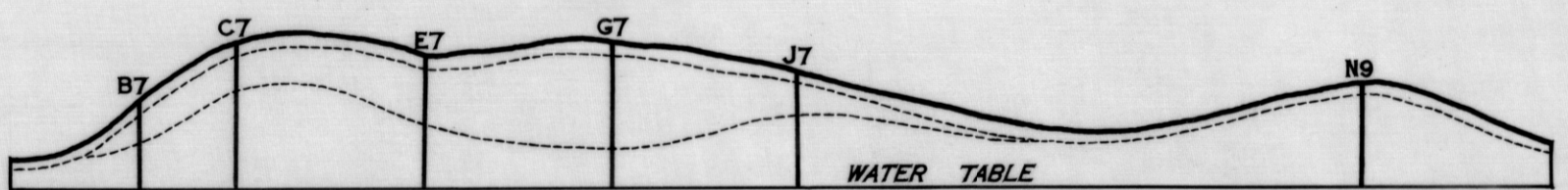
H. G. Keid M.Sc. M.A.I.M.M.
CHIEF GEOLOGIST
19 . 7 . 1951



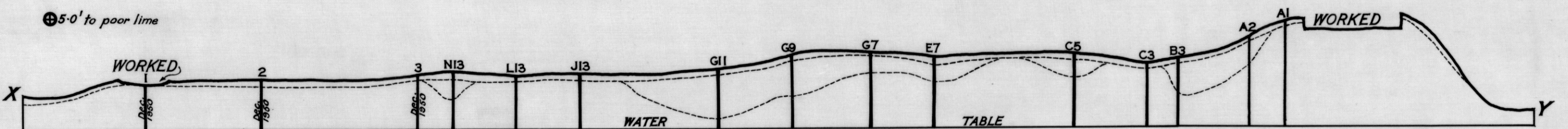
SECTION ALONG LINE A



SECTION ALONG LINE 13



SECTION ALONG LINE 7



SECTION ALONG LINE XY