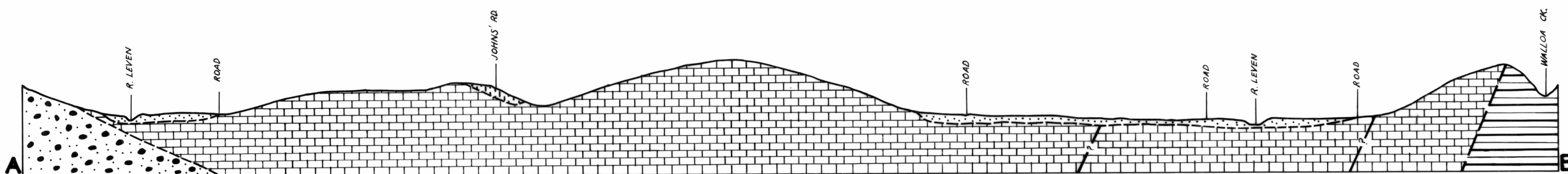


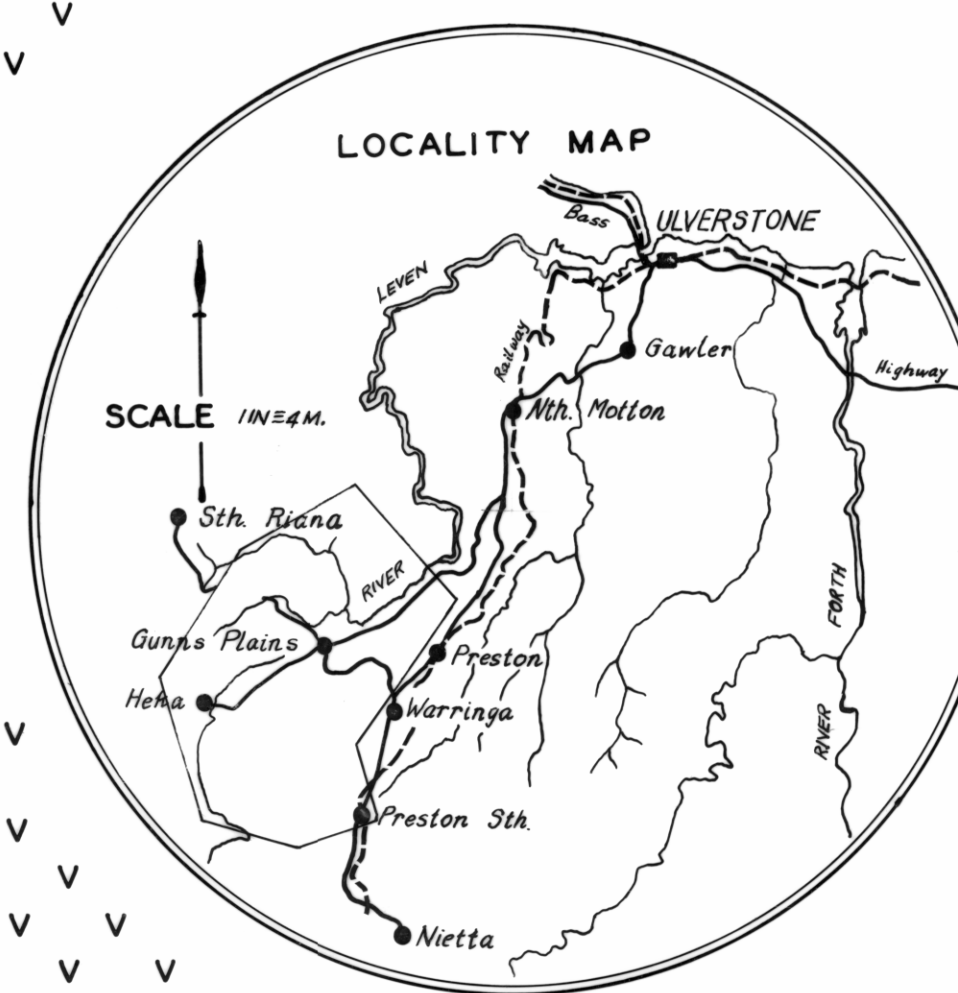
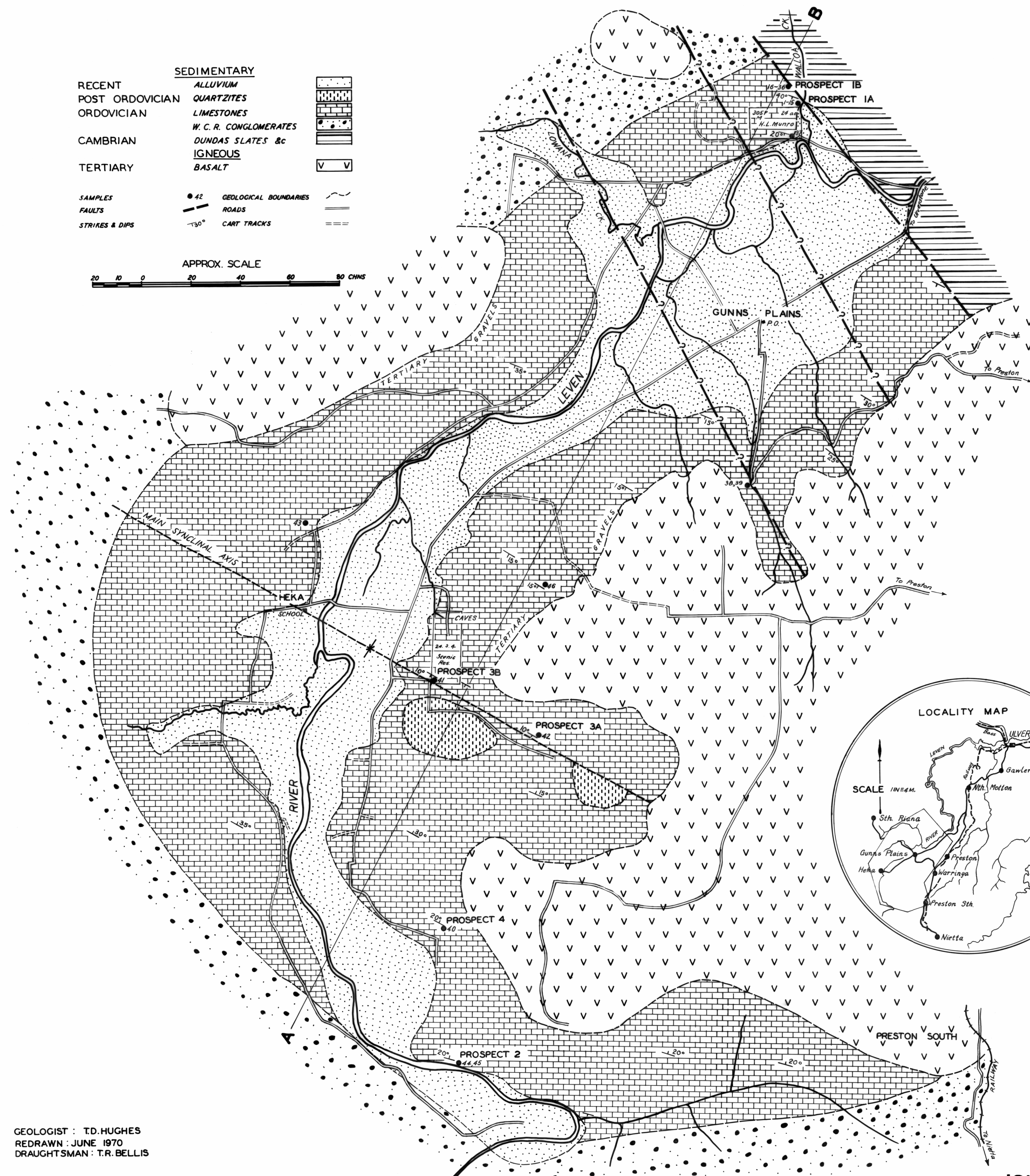
5 cm

LIMESTONE DEPOSITS OF GUNNS PLAINS



SKETCH SECTION A-B TO SHOW GENERAL STRUCTURE

- | | | |
|-----------------|------------------------|--|
| RECENT | ALLUVIUM | |
| POST ORDOVICIAN | QUARTZITES | |
| ORDOVICIAN | LIMESTONES | |
| | W. C. R. CONGLOMERATES | |
| CAMBRIAN | DUNDAS SLATES &c | |
| | IGNEOUS | |
| TERTIARY | BASALT | |
-
- | | | | |
|----------------|------|-----------------------|--|
| SAMPLES | ● 42 | GEOLOGICAL BOUNDARIES | |
| FAULTS | | ROADS | |
| STRIKES & DIPS | | CART TRACKS | |



GEOLOGIST : T.D. HUGHES
REDRAWN : JUNE 1970
DRAUGHTSMAN : T.R. BELLIS