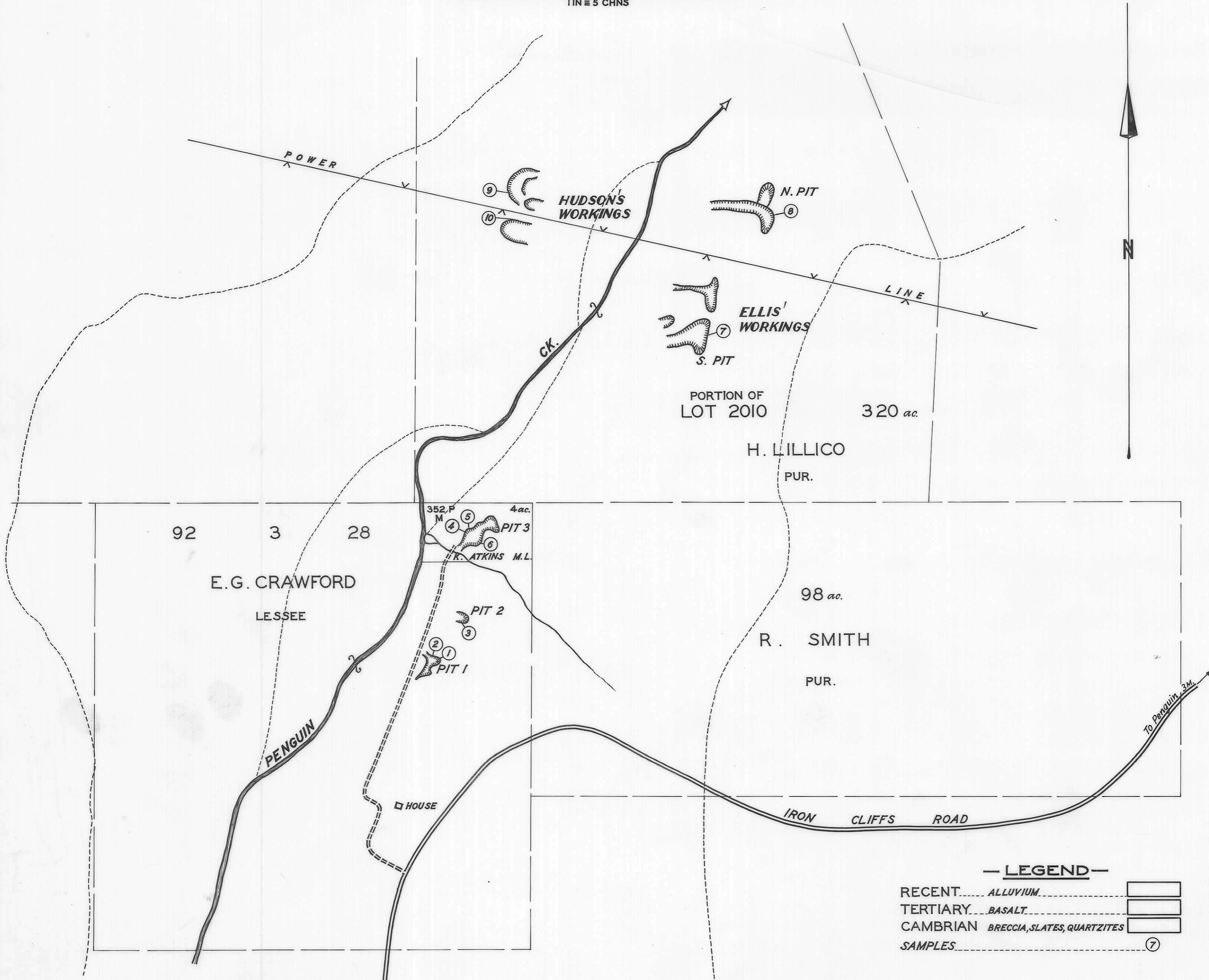


5 cm

# PENGUIN CREEK — IRON DEPOSITS

SCALE  
0 5 10 15 20 CHNS.  
1 IN = 5 CHNS



— LEGEND —

RECENT	ALLUVIUM	
TERTIARY	BASALT	
CAMBRIAN	BRECCIA, SLATES, QUARTZITES	
SAMPLES		

DEPARTMENT OF MINES — TASMANIA		
FIELD WORK	<i>Terence D. Hughes</i>	GEOLOGIST
PLAN	<i>R. L. Kendall</i>	DRAUGHTSMAN
APPROVED		DIRECTOR OF MINES
DATE	28 <sup>TH</sup> AUGUST 1952	