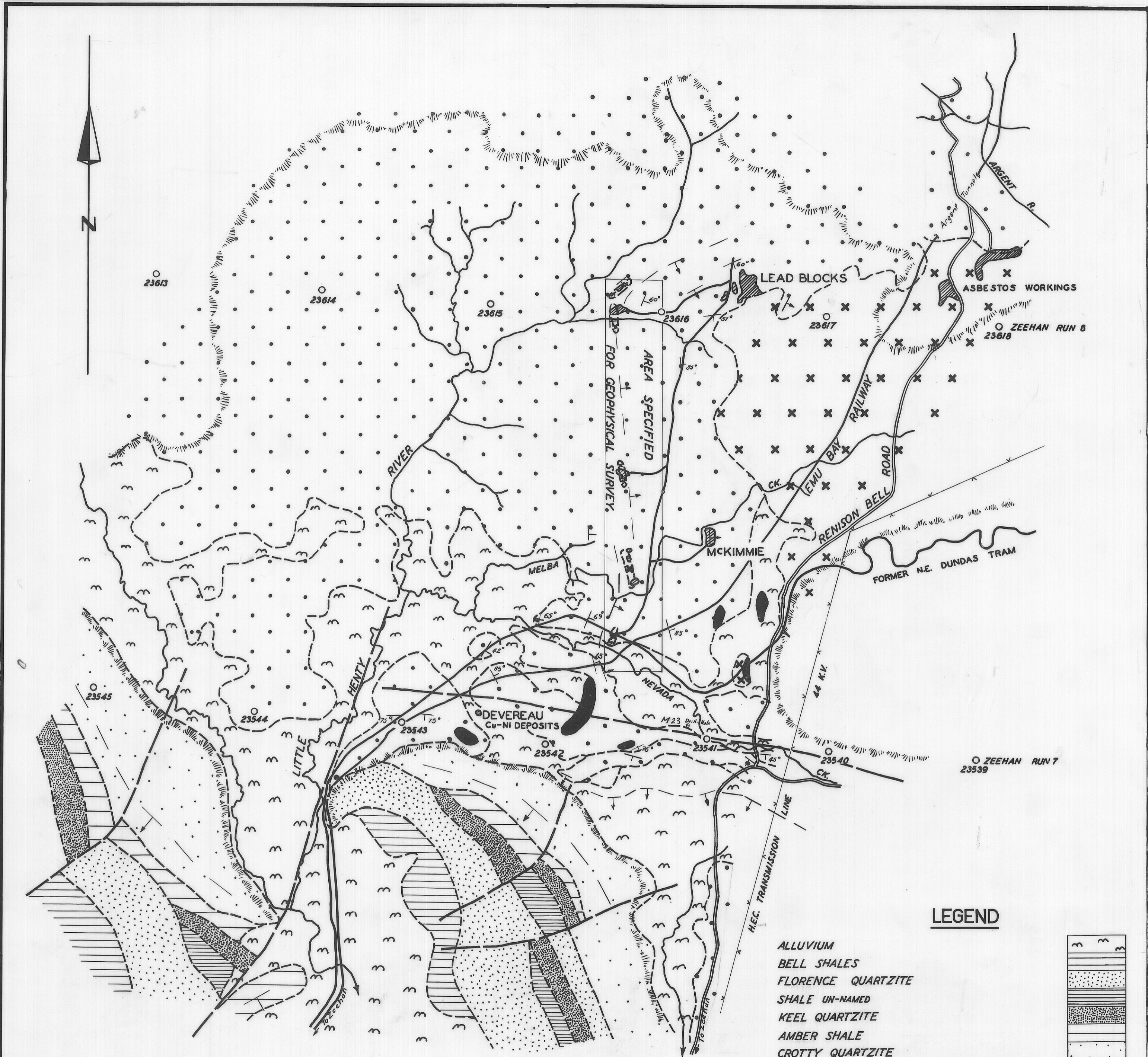
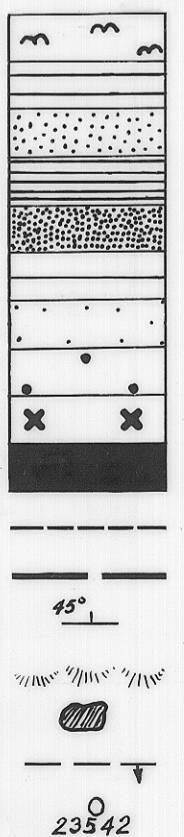


5 cm



LEGEND

- ALLUVIUM
- BELL SHALES
- FLORENCE QUARTZITE
- SHALE UN-NAMED
- KEEL QUARTZITE
- AMBER SHALE
- CROTTY QUARTZITE
- CAMBRIAN GROUP UNDIFFERENTIATED
- BASIC & ULTRABASIC INTRUSIVES
- QUARTZ BLOWS
- GEOLOGICAL BOUNDARIES
- FAULTS
- DIP & STRIKE OF BEDS
- BASE OF HILLS
- MINE WORKINGS ALL ABANDONED
- REGIONAL STRUCTURE LINES
- PRINCIPAL POINTS OF AERIAL PHOTOGRAPH



DEPARTMENT OF MINES — TASMANIA

GEOLOGICAL SKETCH MAP

FIVE MILE COPPER NICKEL DEPOSITS

| | | | |
|-------------|-----------------------|---------------------------|------------|
| DATE | SEPT. 1952 | APPROX. SCALE OF CHAINS | 0 20 40 60 |
| GEOLOGISTS | B. TAYLOR & D. BURGER | MAPSHEET & N ^o | ZEEHAN 50 |
| DRAUGHTSMAN | T. R. BELLIS | FILE N ^o | 1265 |
| REVISIONS | REDRAWN FEB. 1968 | | |

N.B. PLAN PREPARED FROM AERIAL PHOTOGRAPHS BY UNCONTROLLED PLOT