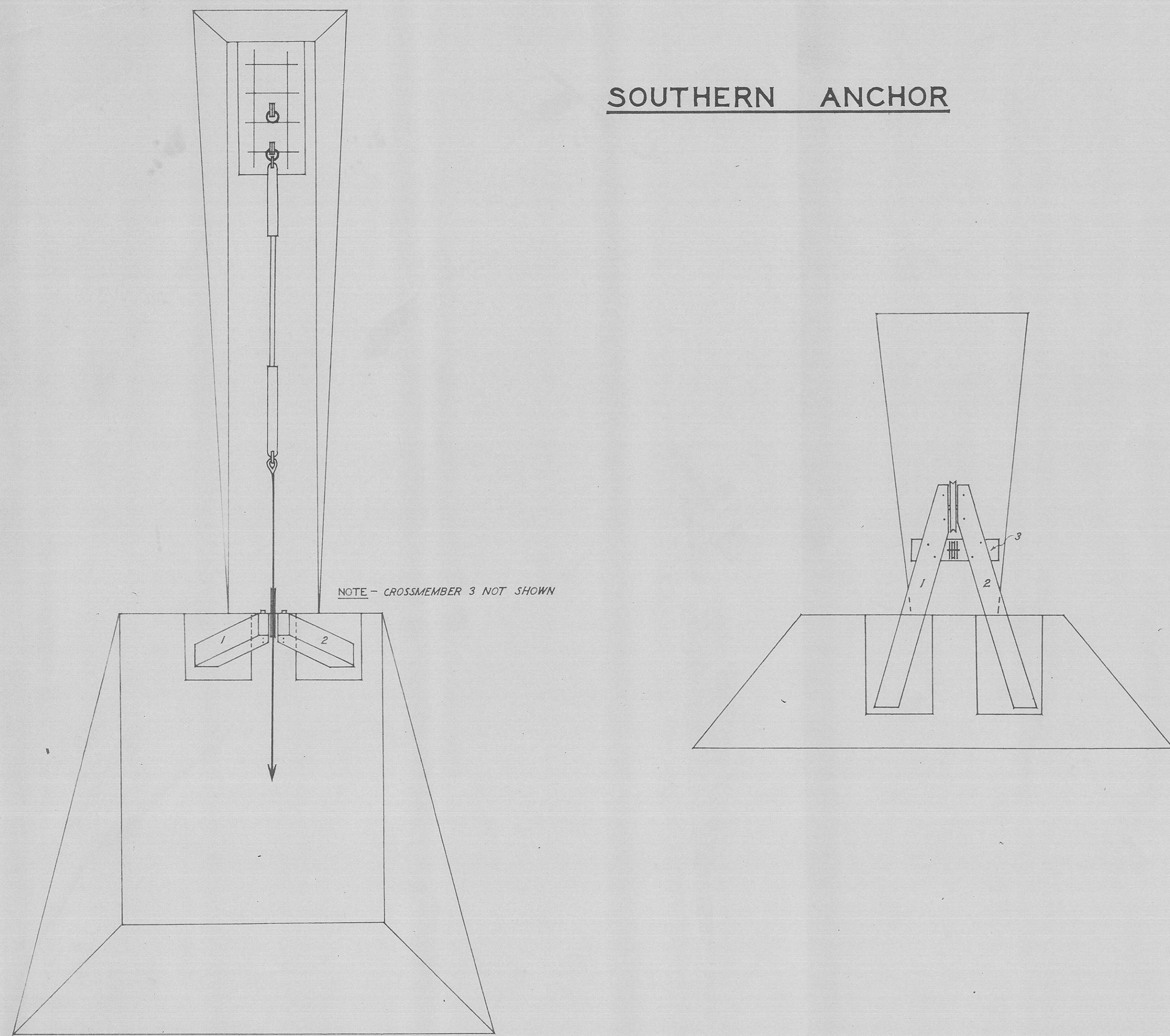


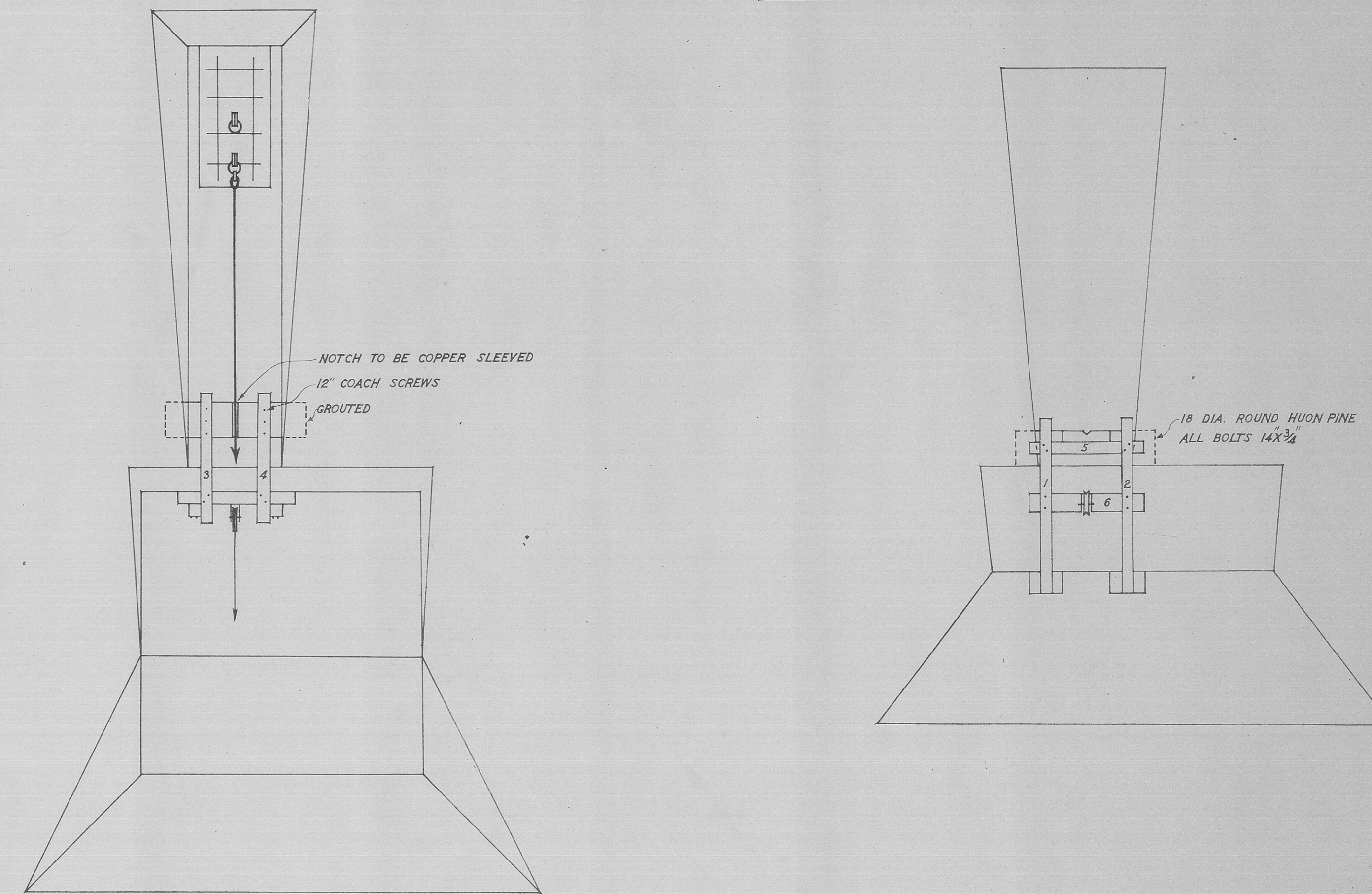
1268A

344

SOUTHERN ANCHOR



NORTHERN ANCHOR



DETAIL OF PIVOT FITTING

SCALE: 1"=8"

606.4'
ALLOWANCE FOR SAG
1.3'
7.4'
SPLICES
12.0'
TOTAL
637.3'

TIMBER

(1)	12X12" - 10' 6"	126'
(2)	12X12" - 10' 6"	126'
(3)	12X6" - 4' 0"	24'
		TOTAL 276'

TIMBER

(1) & (2)	6X6" - 2' 7 1/2"	45'
(3) & (4)	6X6" - 2' 5 1/2"	33'
(5)	6X6" - 1' 5"	15'
(6)	9X6" - 1' 5"	22 1/2'
		TOTAL 115 1/2'

PROPOSED CAGE CROSSING - PIEMAN RIVER

SCALE: 1IN=4FT.

MINES DRAWING OFFICE
FILE COPY
PLEASE RETURN

DEPT. OF MINES
1268-50

6 cm

KIK