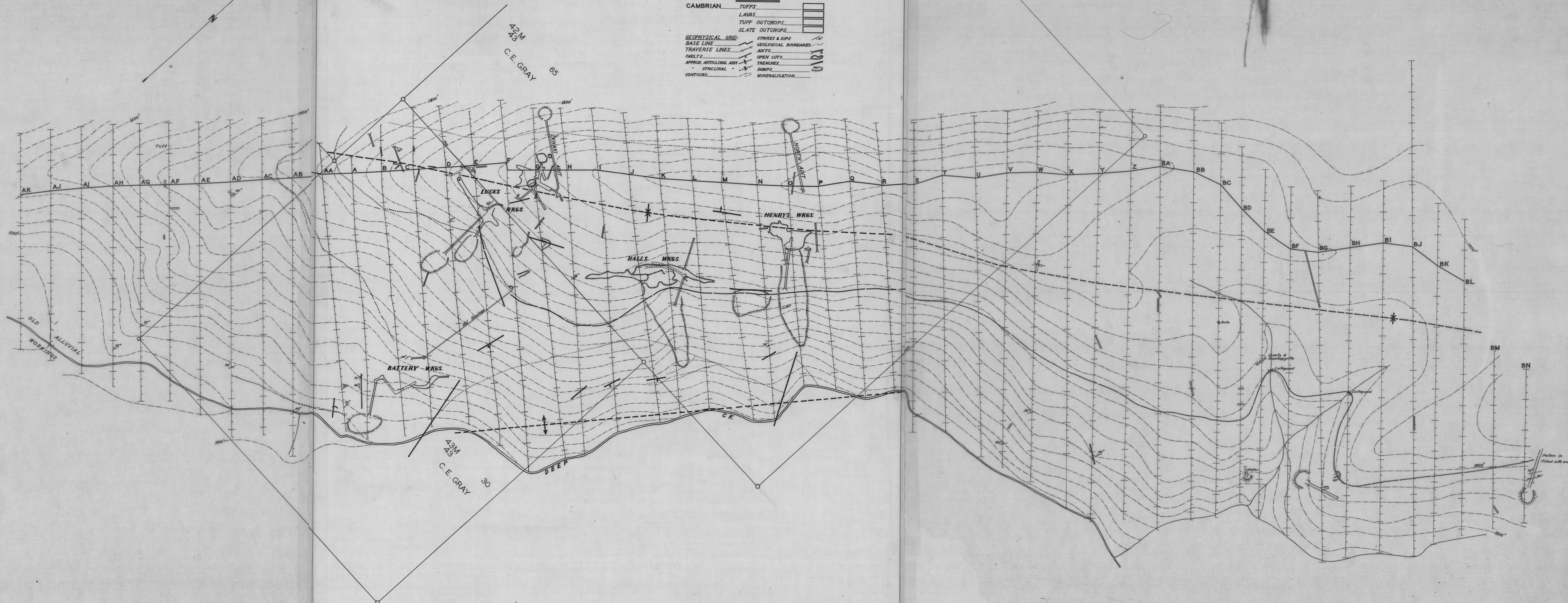


MT CLEVELAND MINE



LEGEND

| | | |
|------------------------|----------------|-----------------------|
| CAMBRIAN | TUFFS | STRIKES & DIPS |
| | LAVAS | GEOLOGICAL BOUNDARIES |
| | TUFF OUTCROPS | ADITS |
| | SLATE OUTCROPS | OPEN CUTS |
| GEOLOGICAL GRID | | TRENCHES |
| BASE LINE | | DUMPS |
| TRAVERSE LINES | | MINERALISATION |
| FAULTS | | |
| APPROX ANTICLINAL AXIS | | |
| SYNCLINAL | | |
| CONTOURS | | |



| | |
|--------------------------------|----------------------------------|
| DEPARTMENT OF MINES - TASMANIA | |
| FIELD WORK | Geologist |
| PLAN | draughtsman |
| APPROVED | DIRECTOR OF MINES |
| DATE | 31 st MAY 1924 HOBART |

1288B A