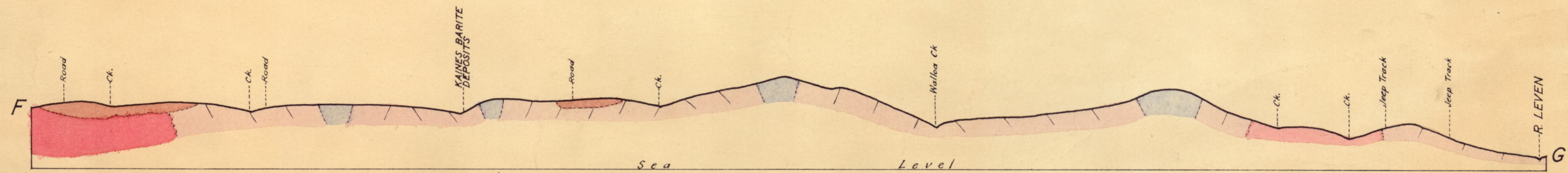
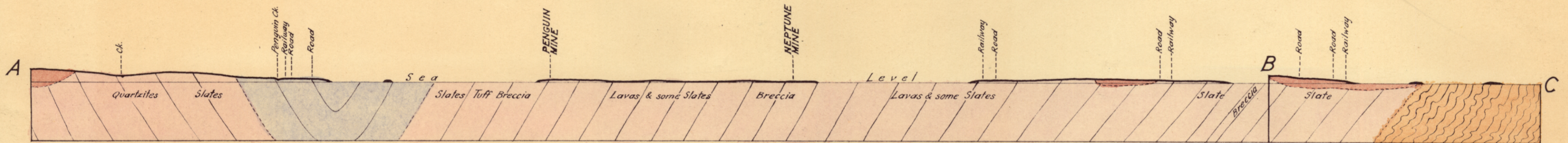
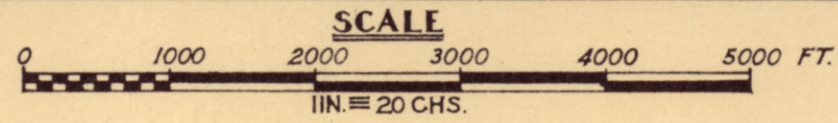


SECTIONS DIAL RANGE MINERAL FIELD



DEPARTMENT OF MINES — TASMANIA		
FIELD WORK	<i>Terence Hughes</i>	GEOLOGIST
PLAN	<i>F. J. Kendall</i>	DRAUGHTSMAN
APPROVED		DIRECTOR OF MINES
DATE	11 TH SEPT. 1953	