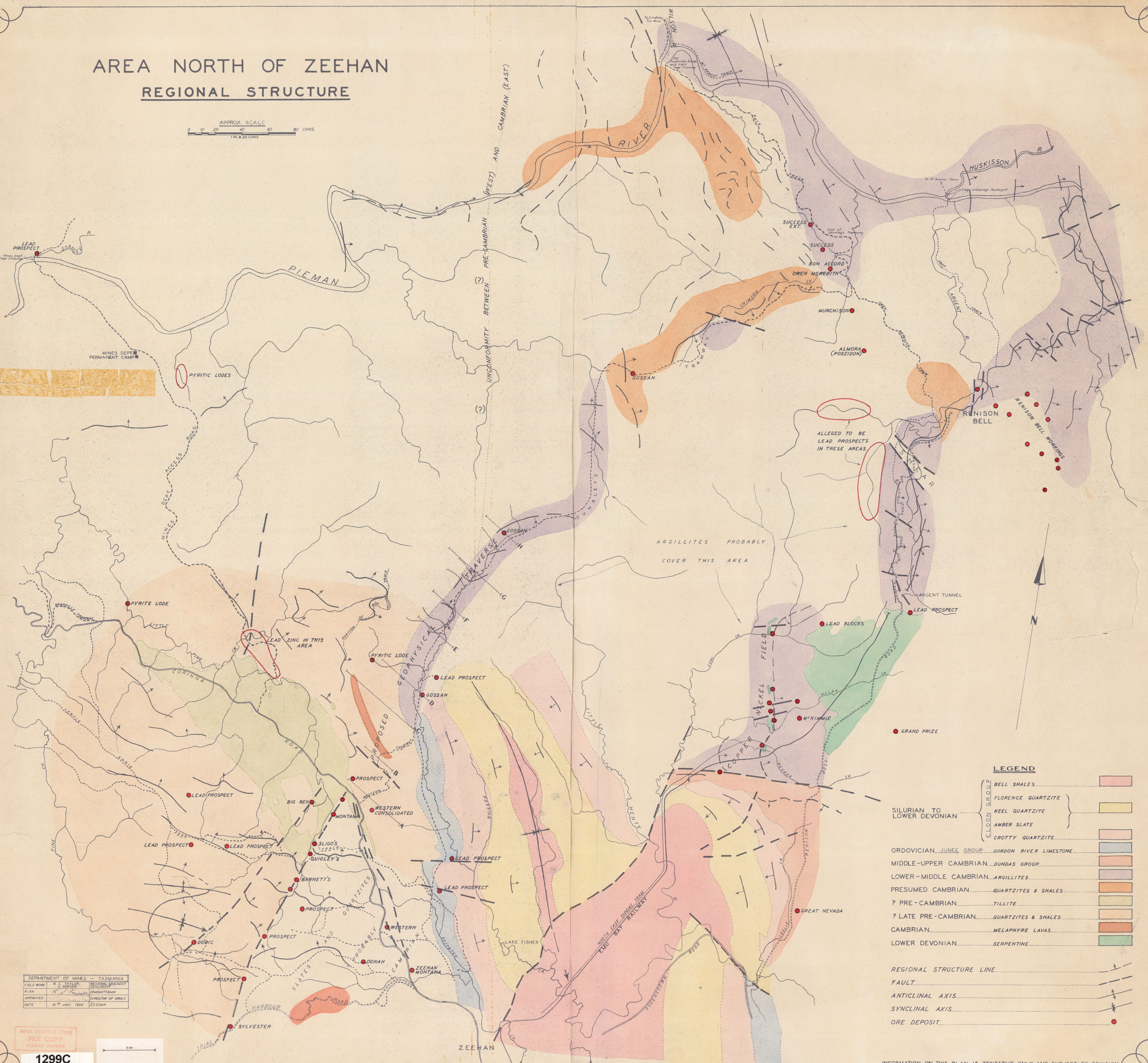
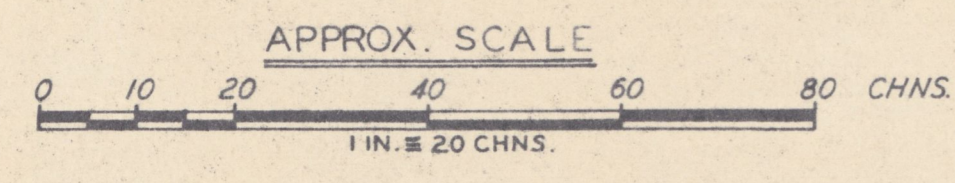


AREA NORTH OF ZEEHAN REGIONAL STRUCTURE



LEGEND

- SILURIAN TO LOWER DEVONIAN
 - BELL SHALES
 - FLORENCE QUARTZITE
 - KEEL QUARTZITE
 - AMBER SLATE
 - CROTTY QUARTZITE
 - ORDOVICIAN JUNEE GROUP
 - GORDON RIVER LIMESTONE
 - MIDDLE-UPPER CAMBRIAN DUNDAS GROUP
 - LOWER-MIDDLE CAMBRIAN ARGILLITES
 - PRESUMED CAMBRIAN QUARTZITES & SHALES
 - ? PRE-CAMBRIAN TILLITE
 - ? LATE PRE-CAMBRIAN QUARTZITES & SHALES
 - CAMBRIAN MELAPHYRE LAVAS
 - LOWER DEVONIAN SERPENTINE
-
- REGIONAL STRUCTURE LINE
 - FAULT
 - ANTICLINAL AXIS
 - SYNCLINAL AXIS
 - ORE DEPOSIT

DEPARTMENT OF MINES - TASMANIA
 FIELD WORK BY S. TAYLOR REGIONAL GEOLOGIST
 PLAN BY S. BURGESS GEOLOGIST
 APPROVED BY [Signature] DRAUGHTSMAN
 DATE 15th JAN. 1934 DIRECTOR OF MINES
 ZEEHAN