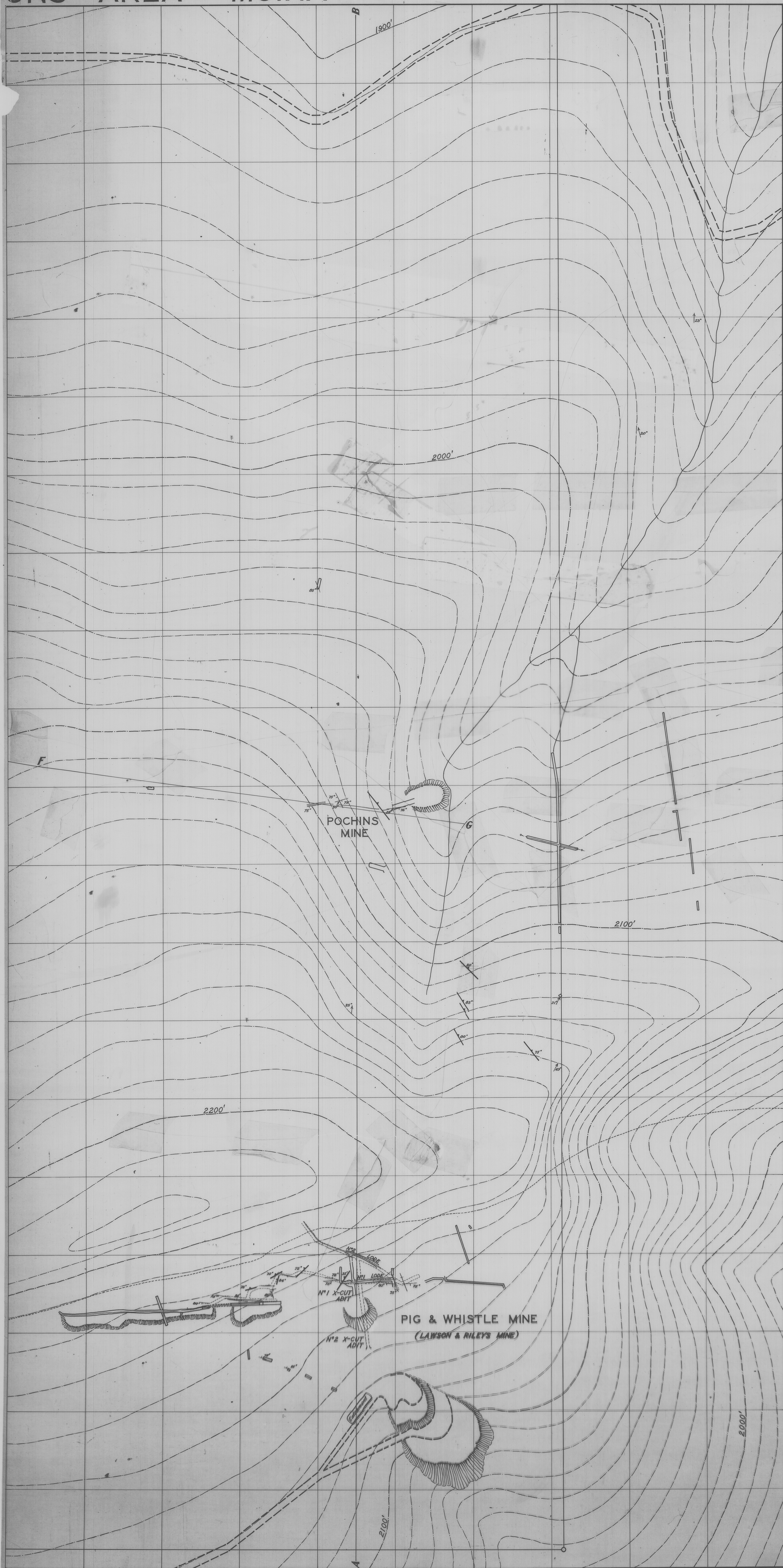


5 cm

# ONS AREA — MOINA



**LEGEND**

**SEDIMENTARY ROCKS**

ORDOVICIAN QUARTZITES & SHALES..... [Symbol]

CONGLOMERATE..... [Symbol]

**METAMORPHIC ROCKS**

CAMBRIAN? PORPHYROID..... [Symbol]

**IGNEOUS ROCKS**

DEVONIAN GRANITE..... [Symbol]

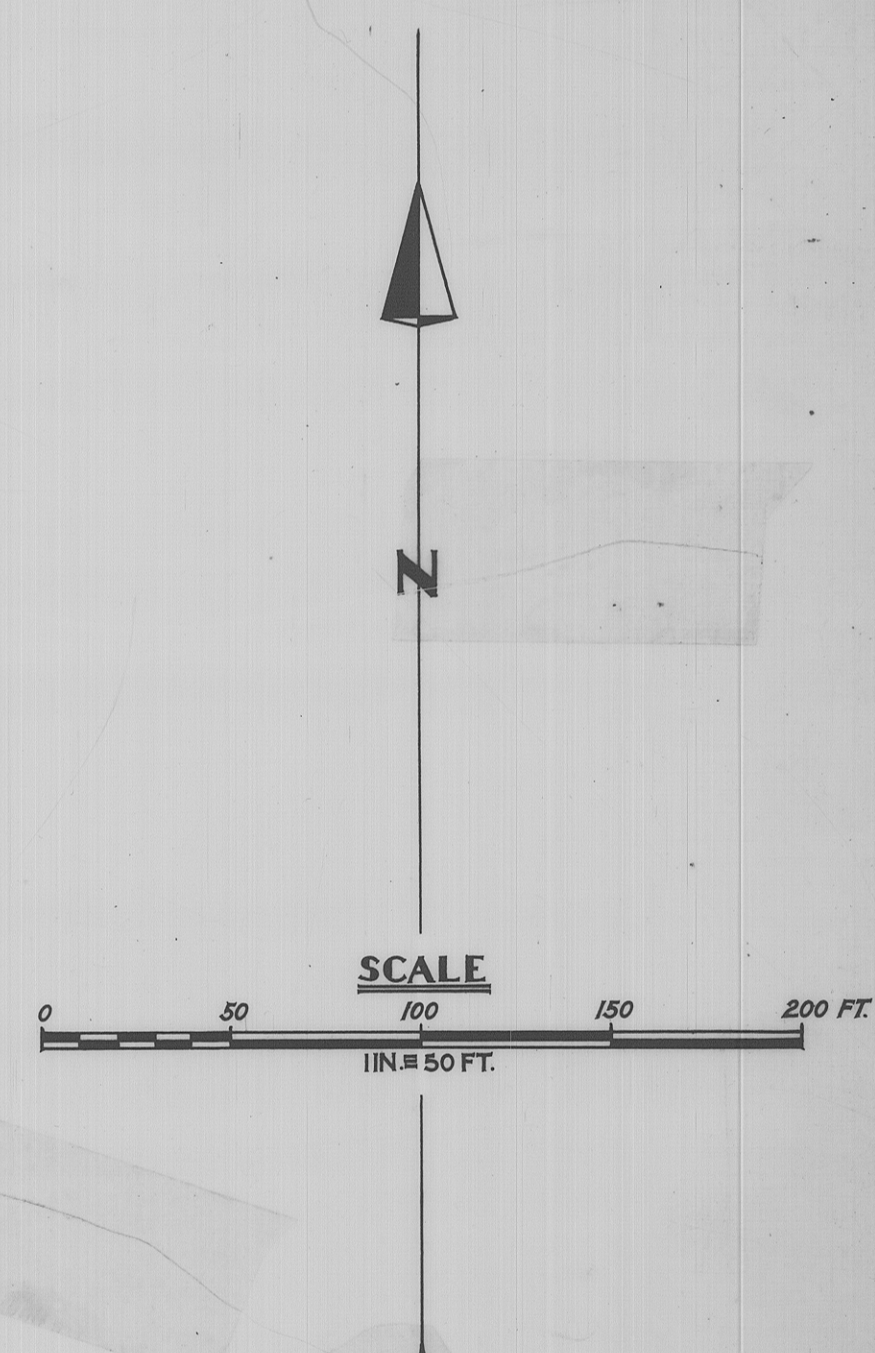
PEGMATITES (WITH WOLFRAM)..... [Symbol]

APLITE DYKES (BARREN)..... [Symbol]

DIP DIRECTION AND ANGLE OF BEDS..... [Symbol]

JOINTS..... [Symbol]

FAULTS..... [Symbol]



DEPARTMENT OF MINES — TASMANIA		
FIELD WORK	JOHN ELLISTON	RES. GEOLOGIST
FIELD WORK	L.G. NIXON	GEOLOGIST
PLAN	<i>[Signature]</i>	DRAUGHTSMAN
APPROVED	<i>[Signature]</i>	DIRECTOR OF MINES
DATE	NOV. 1953	LORINNA

Reduce AB to 50 mm. B

A