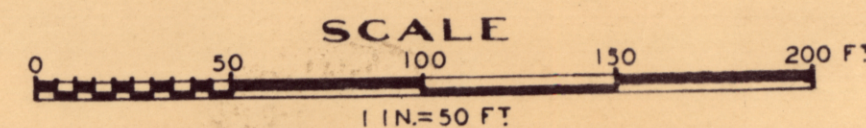
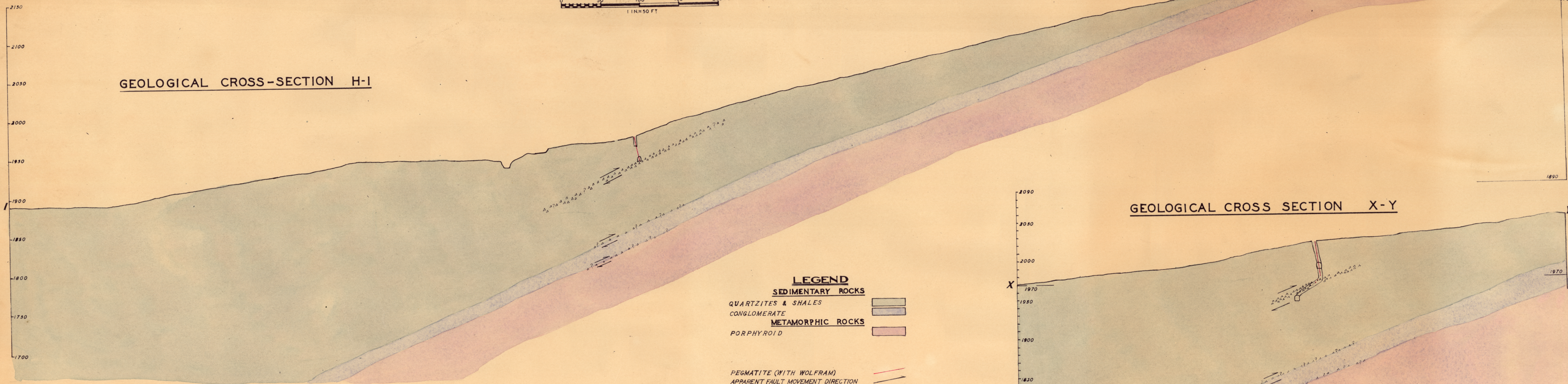


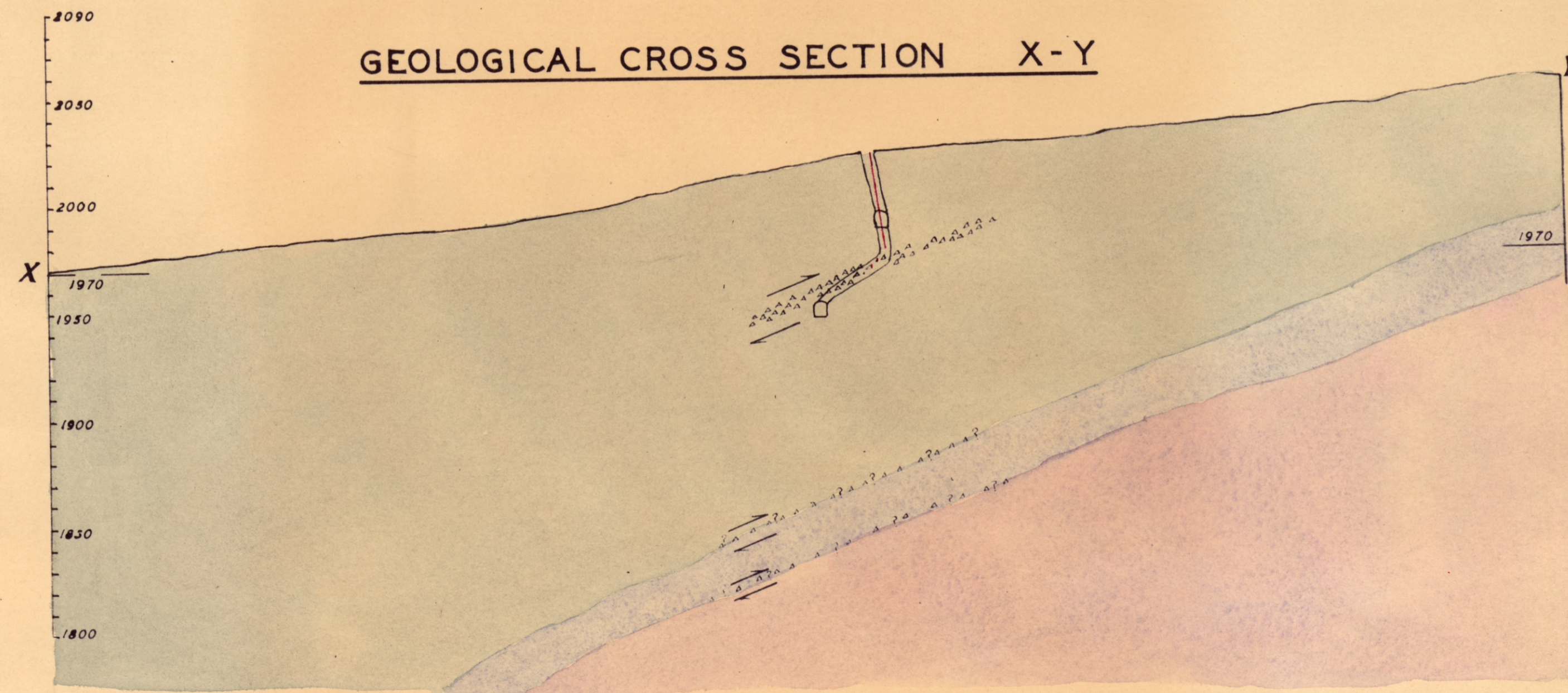
ALL NATIONS MINE - MOINA



GEOLOGICAL CROSS-SECTION H-I



GEOLOGICAL CROSS SECTION X-Y



- LEGEND**
- SEDIMENTARY ROCKS**
- QUARTZITES & SHALES
 - CONGLOMERATE
- METAMORPHIC ROCKS**
- PORPHYROID
- PEGMATITE (WITH WOLFRAM)
- APPARENT FAULT MOVEMENT DIRECTION
- FAULT BRECCIA
- POSSIBLE FAULT RECURRENCE

DEPARTMENT OF MINES - TASMANIA		
FIELD WORK	JOHN ELLISTON	GEOLOGIST
FIELD WORK	L. G. NIXON	GEOLOGIST
PLAN	<i>[Signature]</i>	DRAUGHTSMAN
APPROVED	<i>[Signature]</i>	DIRECTOR OF MINES
DATE	NOVEMBER 1951	LORINNA

1308A 308

5 cm

1308-37