

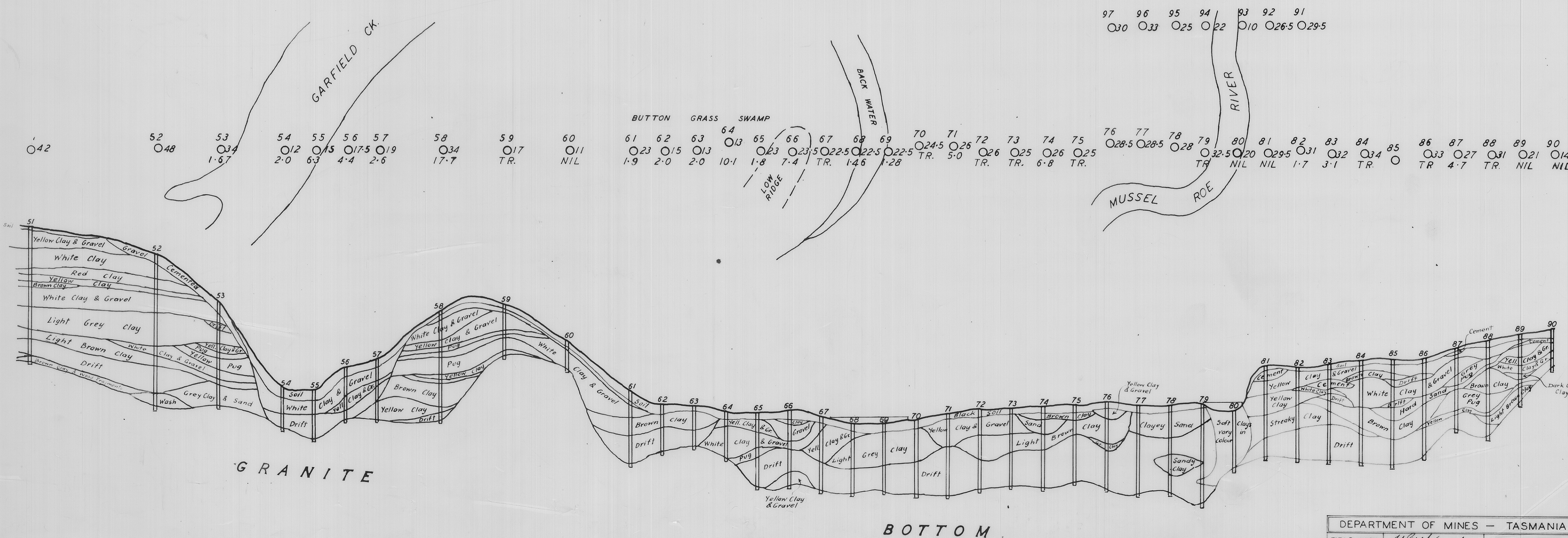
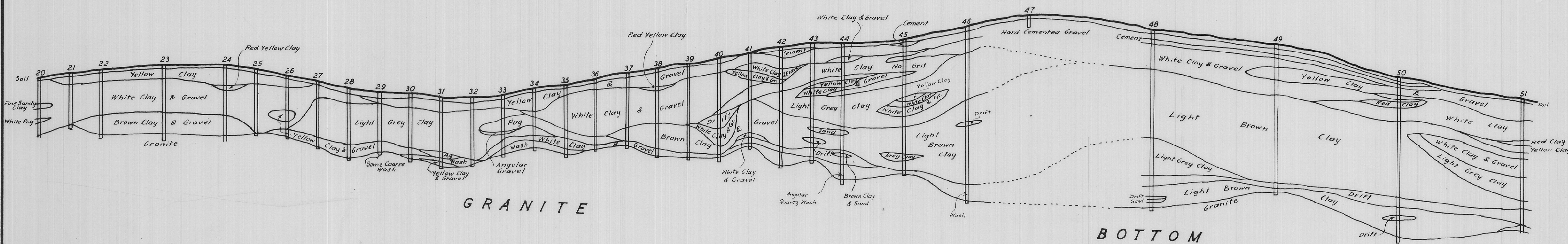
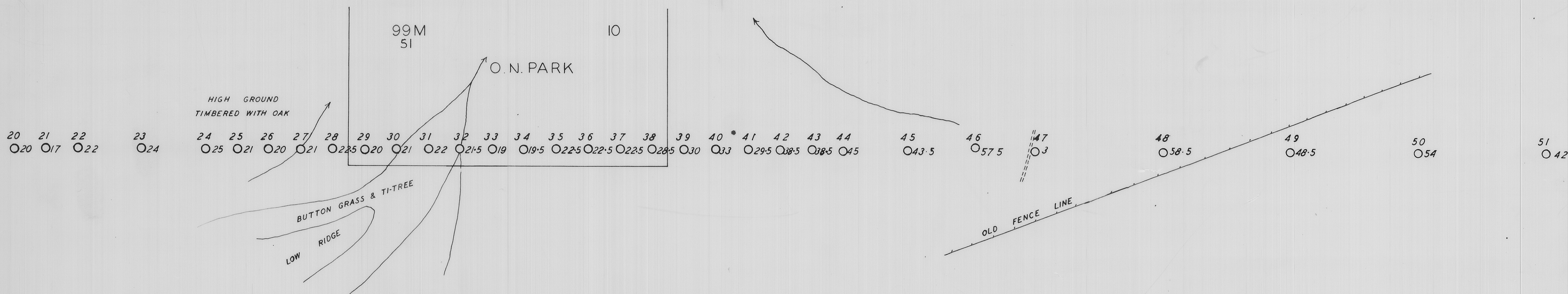
5 cm

# BORING CAMPAIGN GLADSTONE DISTRICT 1953

## MUSSELL ROE RIVER AREA

HORIZ. SCALE: 1 IN. = 2 CHNS.  
VERT. SCALE: 1 IN. = 20 FT.

BORE N°  
O DEPTH OF BORE  
GRADE - 70% TIN  
OZ. PER CU. YD.



DEPARTMENT OF MINES - TASMANIA	
FIELD WORK	CHIEF GEOLOGIST
PLAN	DRAUGHTSMAN
APPROVED	DIRECTOR OF MINES
DATE	8 <sup>th</sup> APRIL 1954 HOBART

1311A-25