

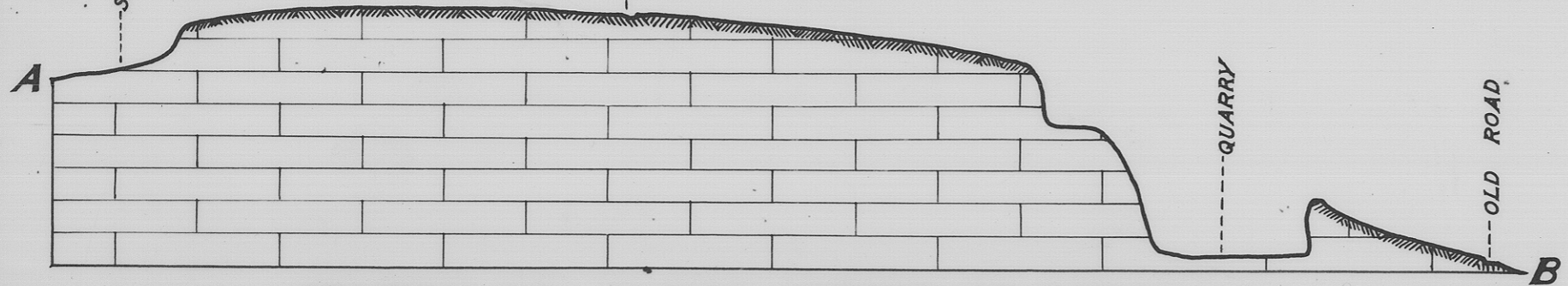
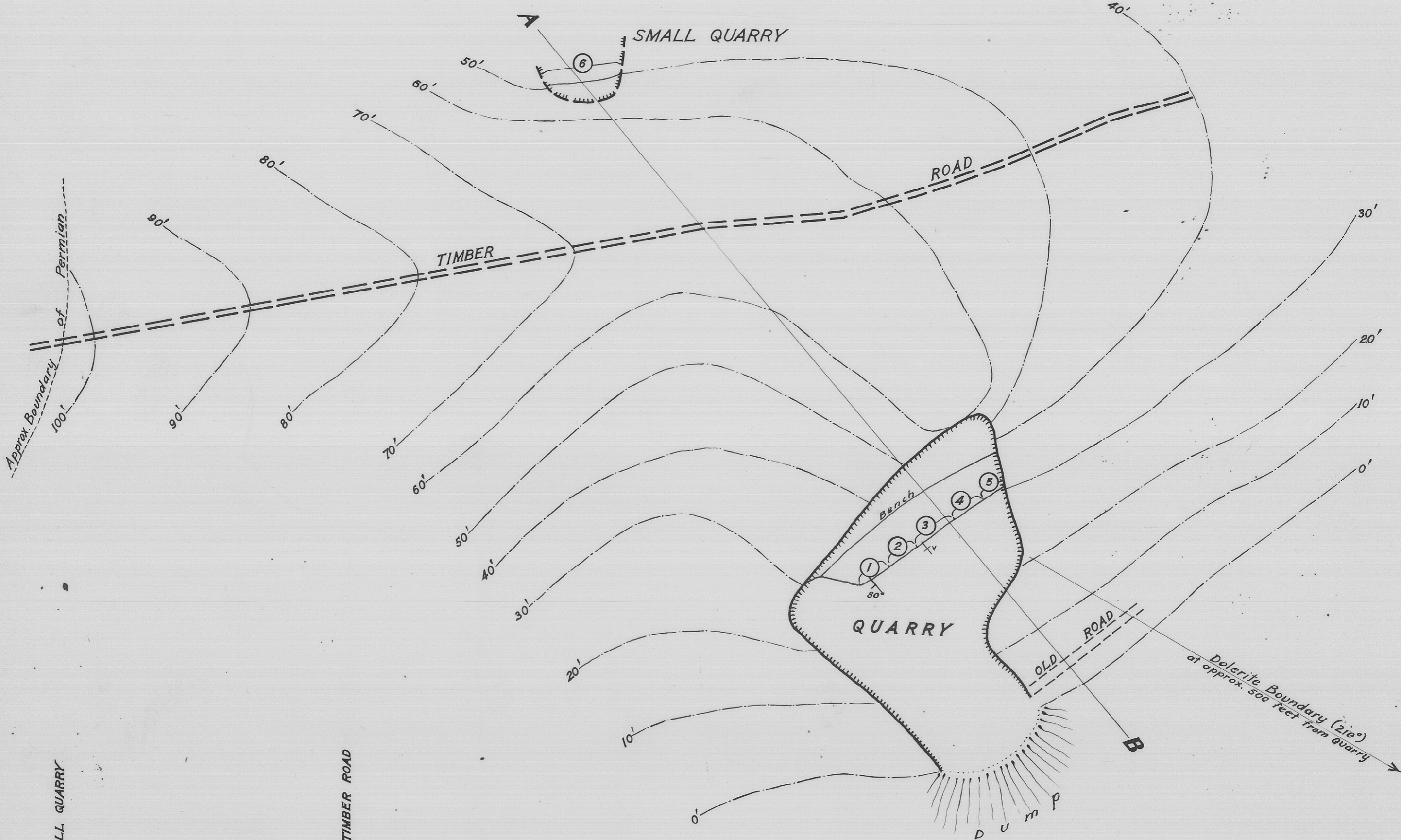
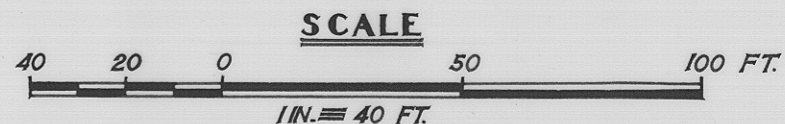
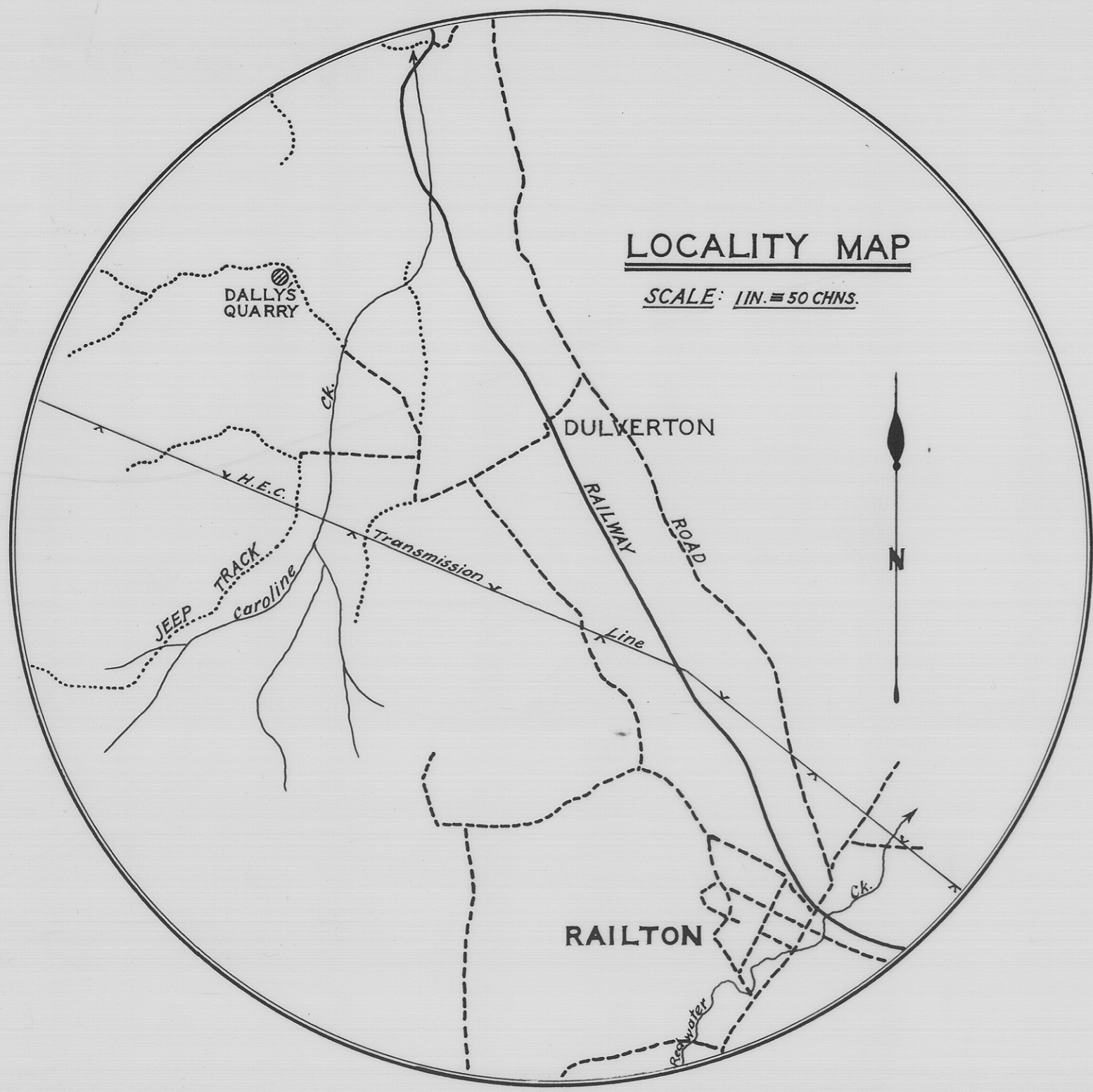
1328

417

LIMESTONE PROSPECT

NEAR

RAILTON



SECTION AB ALONG STRIKE OF ROCK

LIMESTONE SAMPLES..... (2)

DEPARTMENT OF MINES — TASMANIA		
FIELD WORK	<i>Terence Hughes</i>	GEOLOGIST
PLAN	<i>K. S. Kendall</i>	DRAUGHTSMAN
APPROVED		DIRECTOR OF MINES
DATE	23 RD AUG 1954	HOBART

1328-37

5 cm