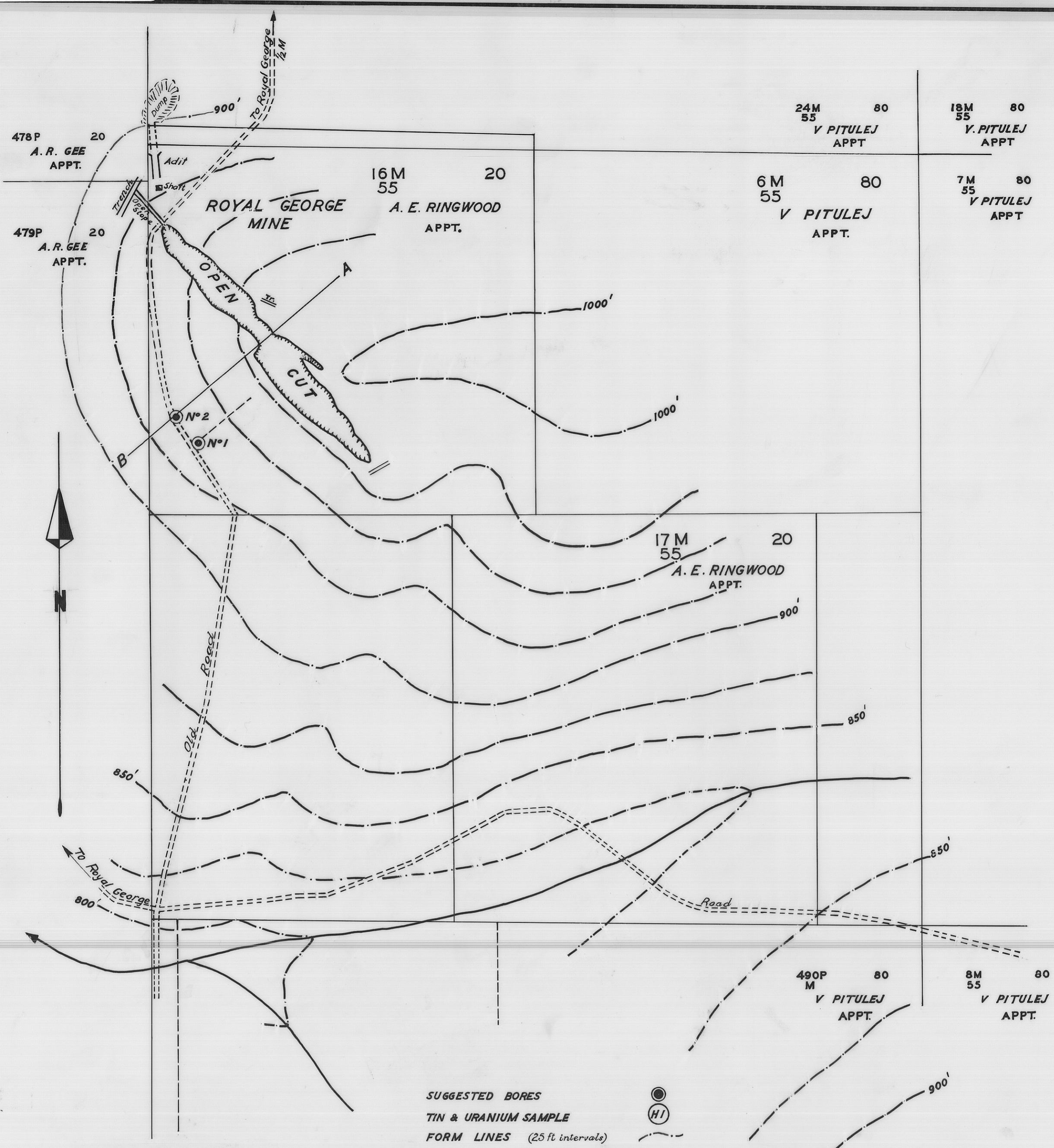


5 cm



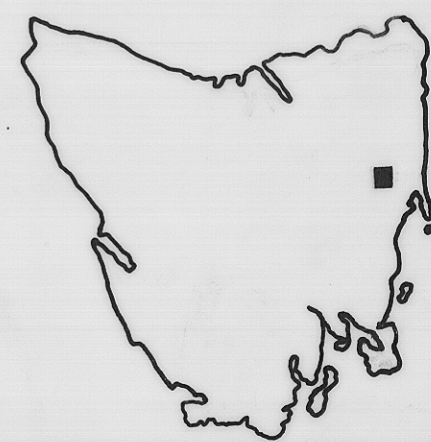
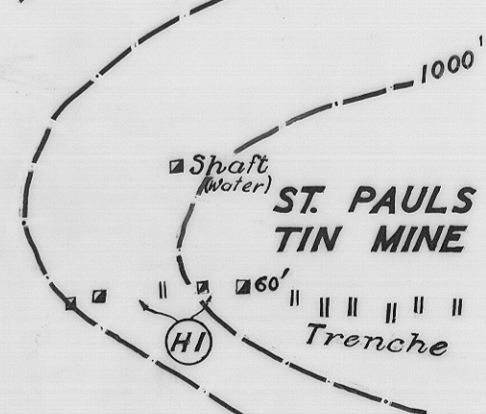
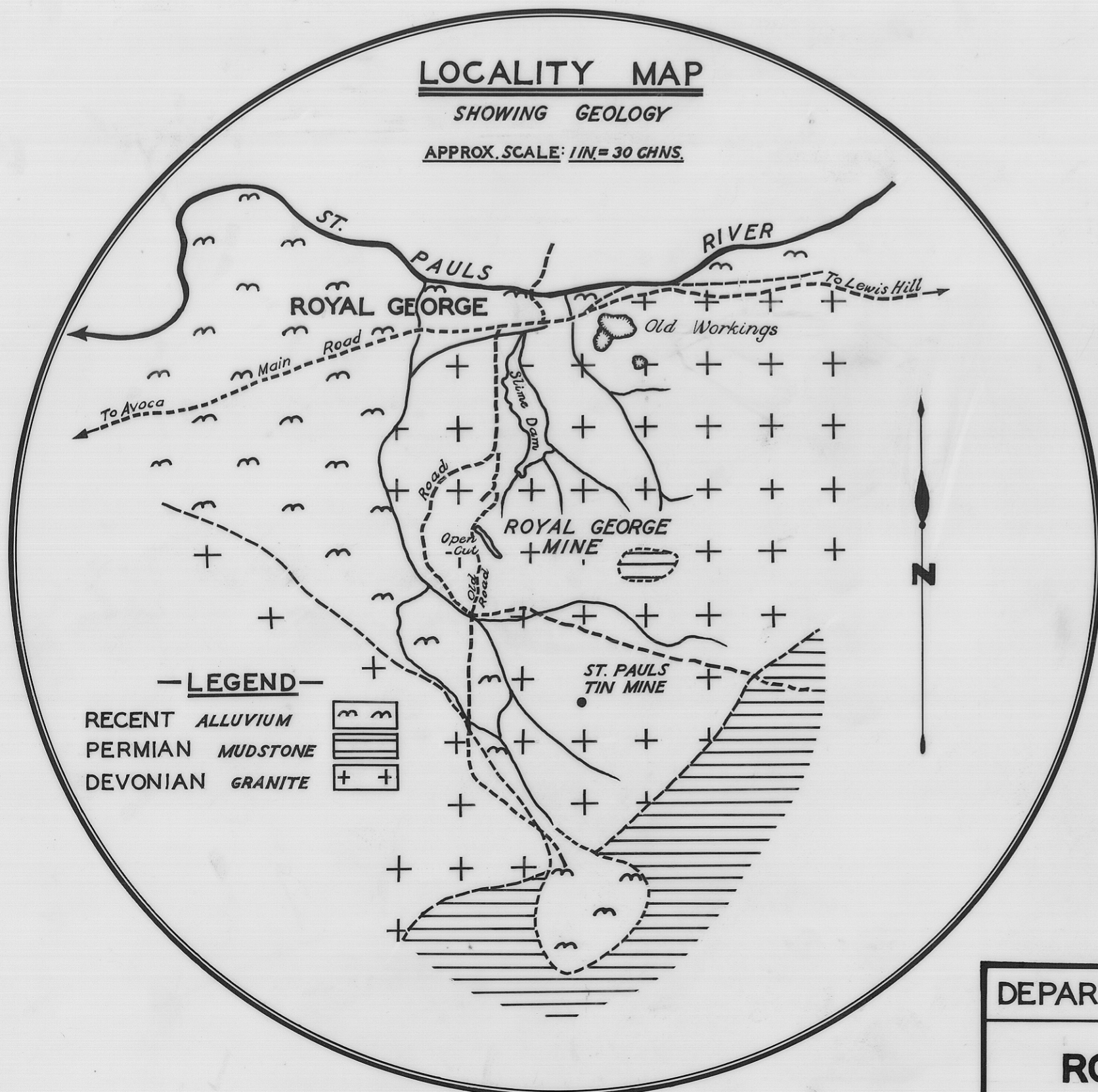
SUGGESTED BORES
 TIN & URANIUM SAMPLE
 FORM LINES (25 ft intervals)



LOCALITY MAP

SHOWING GEOLOGY

APPROX. SCALE: 1 IN = 30 CHNS.



DEPARTMENT OF MINES TASMANIA

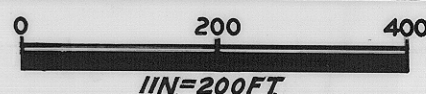
ROYAL GEORGE AREA

DATE APRIL 1955

GEOLOGIST T.D. HUGHES

DRAUGHTSMAN H. MACKINNON

REVISIONS REDRAWN SEPT '67



MAP SHEET & N° S' HILL 55

FILE N° 1344