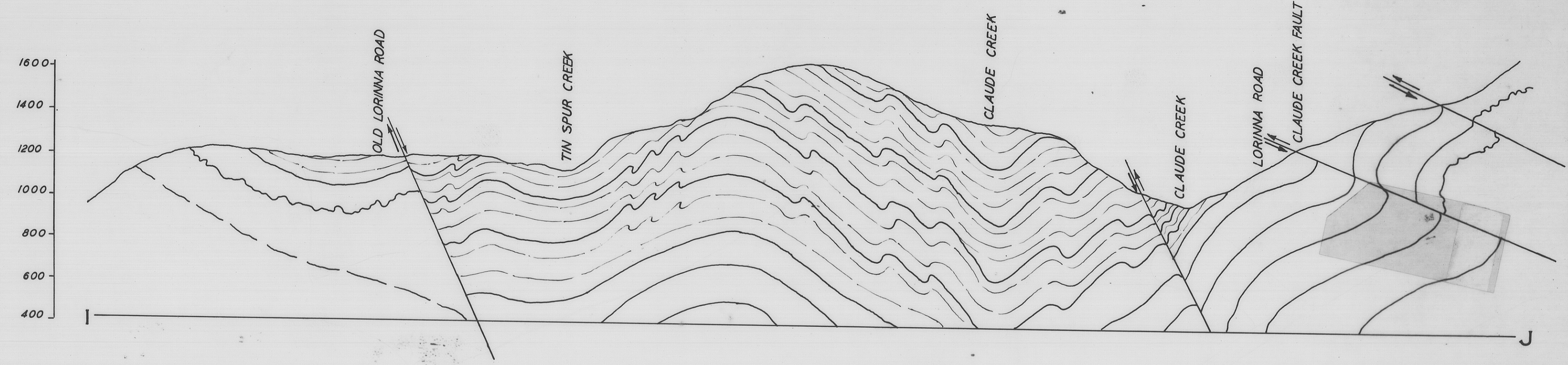
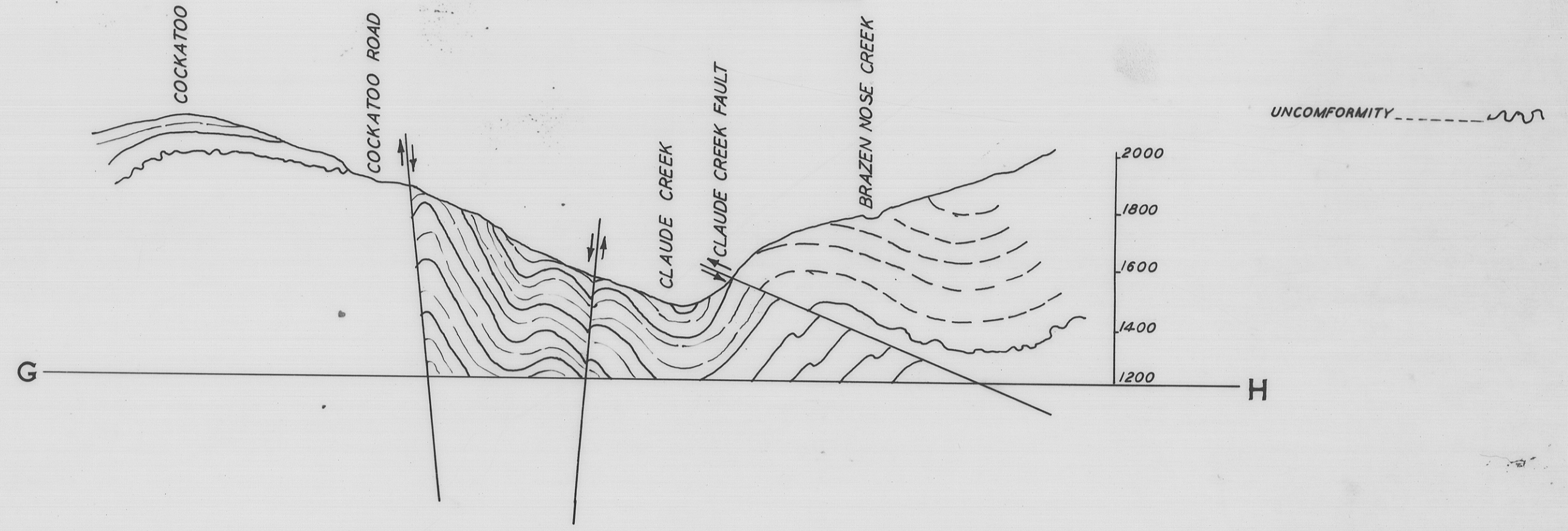


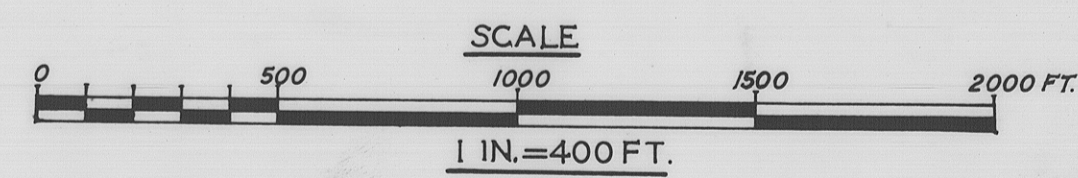
SIMPLIFIED SECTION IJ



SIMPLIFIED SECTION GH



GENERALISED GEOLOGICAL PLAN
ROUND HILL AREA



LEGEND

SEDIMENTARY

- PLEISTOCENE GLACIAL TILL
- MID. ORDOVICIAN LORRINNA LIMESTONE
- LOWER ORDOVICIAN CARLSONS CK. QUARTZITES
- LOWER ORDOVICIAN ROUND HILL CONGLOMERATES
- CAMBRIAN CETHANA GROUP

IGNEOUS

- LOWER DEVONIAN DALCOATH GRANITE

- ROADS
- FORM LINES (100 FT. INTERVALS)
- NORMAL FAULTS
- ANTICLINAL AXES
- SYNCLINAL AXES
- GEOLOGICAL BOUNDARIES
- STRIKES & DIPS
- THRUST FAULTS (Teeth on upper plate)

DEPARTMENT OF MINES TASMANIA	
FIELD WORK	REG. GEOLOGIST
PLAN	DRAUGHTSMAN
DATE	LORRINNA
FILE NO.	1359-37