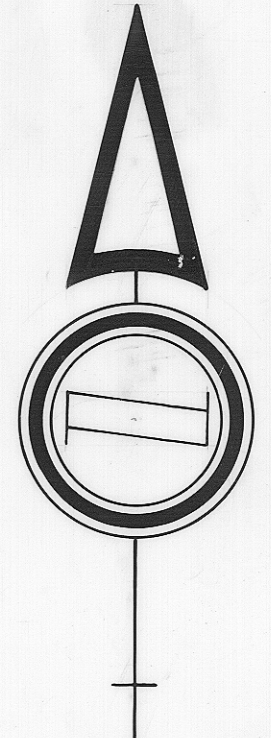
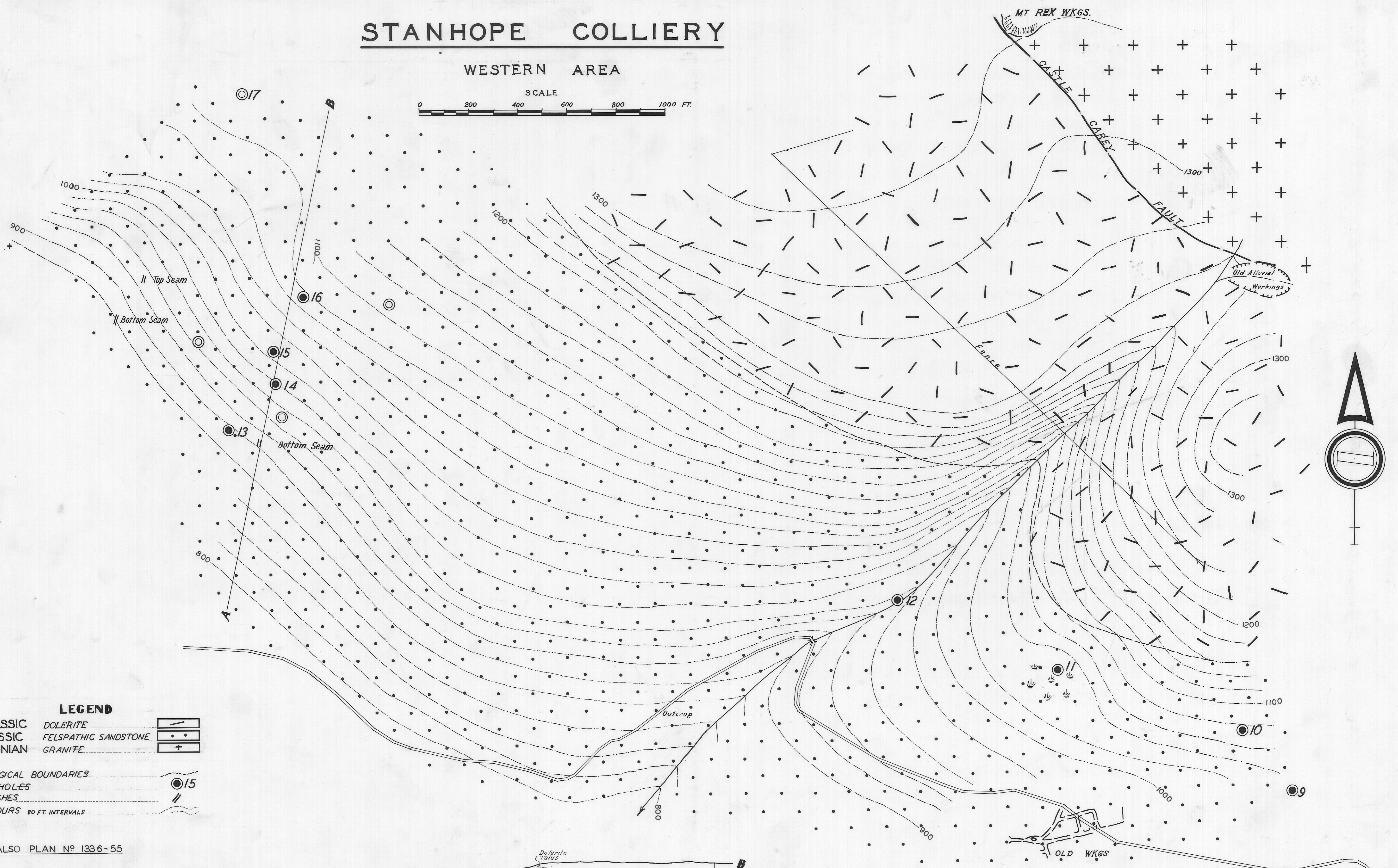
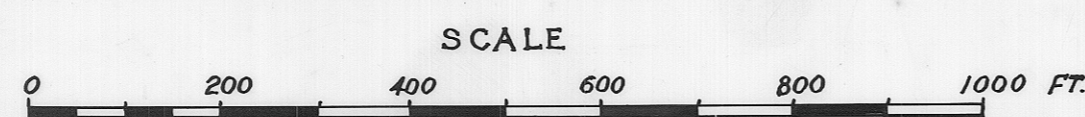


STANHOPE COLLIERY

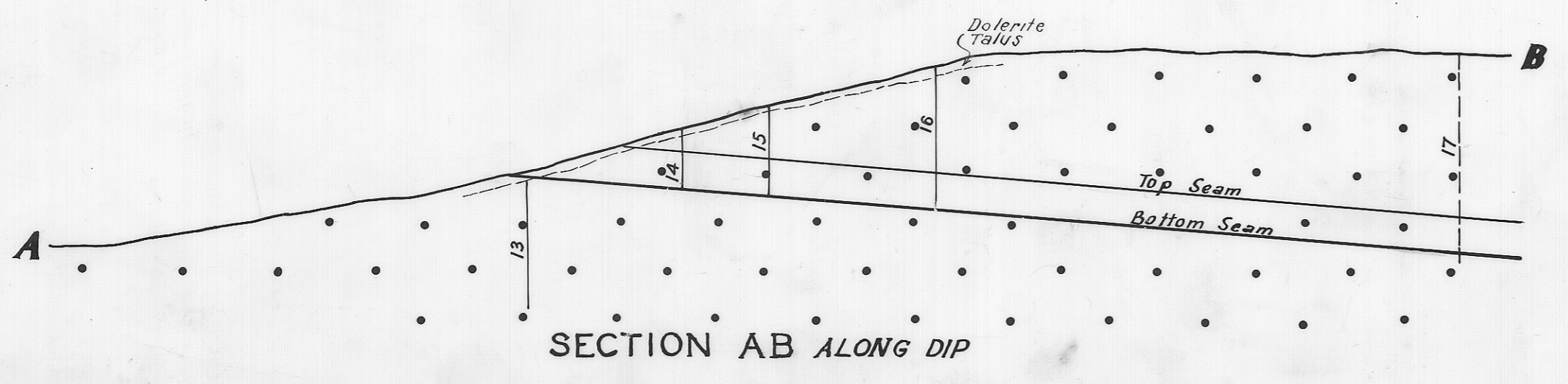
WESTERN AREA



LEGEND

JURASSIC	DOLERITE	
TRIASSIC	FELSPATHIC SANDSTONE	
DEVONIAN	GRANITE	
GEOLOGICAL BOUNDARIES		
BOREHOLES		
TRENCHES		
CONTOURS 20 FT. INTERVALS		

SEE ALSO PLAN N° 1336-55



DEPT. OF MINES
1371-48

T. D. HUGHES
GEOLOGIST
MAY 1956

STANHOPE
COLLIERY
MAIN HEADING

SEE CORRECTED PLAN N° 3549 (1971)
o/s