

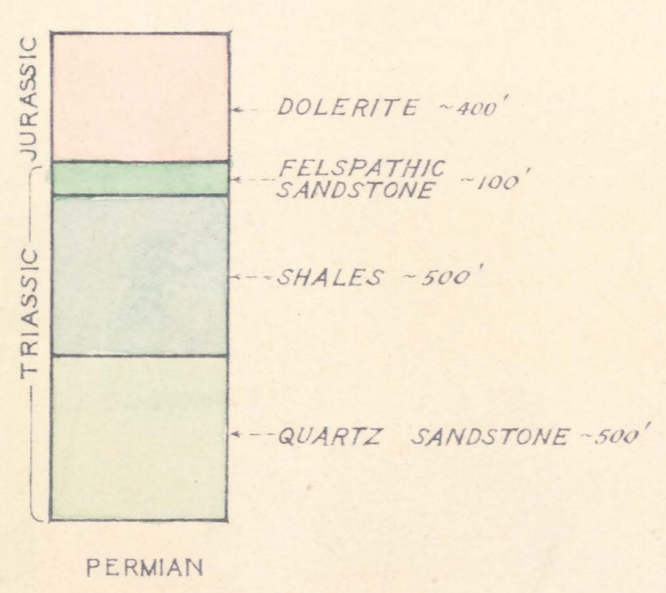
GEOLOGY OF MT. LLOYD DISTRICT

APPROX. SCALE
0 20 40 60 80 CHAINS

THE TOPOGRAPHIC BASE IS AN UNCONTROLLED AERIAL MOSAIC.

— LEGEND —

STRATIGRAPHIC KEY



- GEOL. BOUNDARIES — ESTABLISHED
- INFERRED
- METAMORPHOSED SEDIMENTS (Quartzite & Gneiss)
- FINE GRAINED DOLERITE (chilled)
- (↘) LANDSLIDES (with direction of movement)
- PROSPECTING HOLES
- CLIFFS
- ALL WEATHER JEEP ROADS
- OLD LOGGING ROADS (passable in summer)
- FOOT TRACKS
- ⚡ LOGGING RAMPS
- BUILDINGS
- CREEKS ORIGINATING BENEATH TALUS
- ⚡ WATERFALLS
- LARGE AREAS OF INTERNAL DRAINAGE AT HEELS OF LANDSLIPS

DEPARTMENT OF MINES — TASMANIA		
FIELD WORK	Kerry L. Bond	GEOLOGIST
PLAN	H. J. Rendall	DRAUGHTSMAN
DATE	MAY 1958	HOBART
FILE N°	1372-81	

This area is topographically negative and in fact may be Shales. The superficial cover is dolerite.