

FIG. 4 SKETCH PLAN OF N°2 SITE

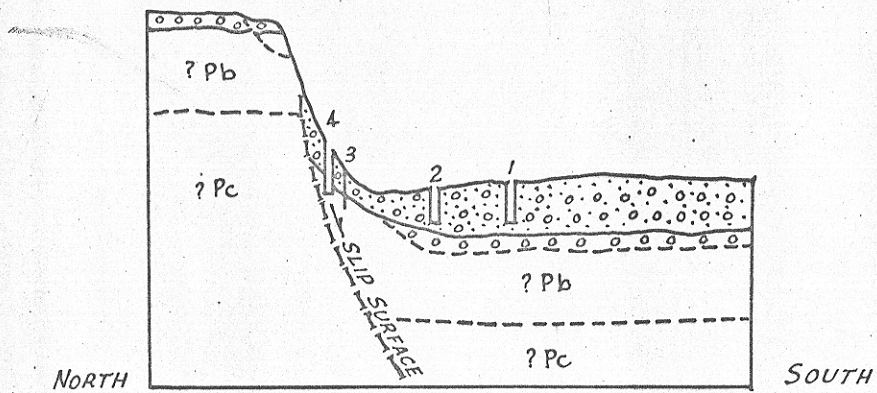


FIG. 5 SKETCH SECTION N-S N°2 SITE

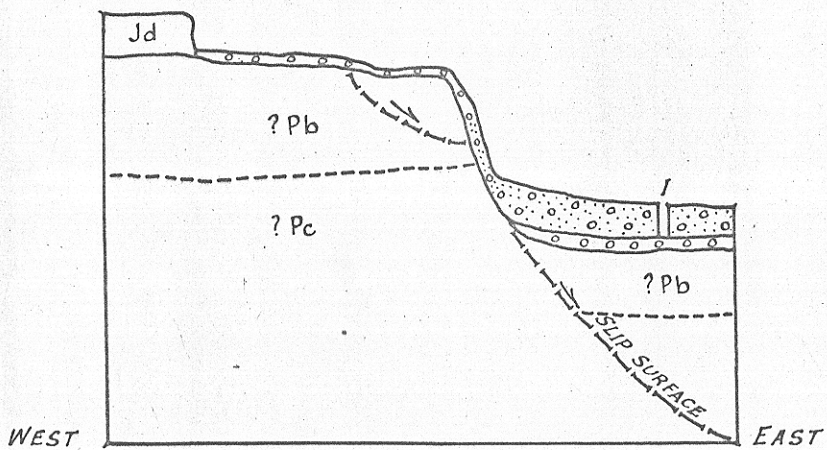




FIG. 6 SKETCH SECTION E-W N°2 SITE

-  Dolerite boulders with haematite nodules.
-  Dolerite boulders and haematite nodules in a matrix of Permian clay.

K. L. Burns
GEOLOGIST
10.9.1956

5 cm

1387

472