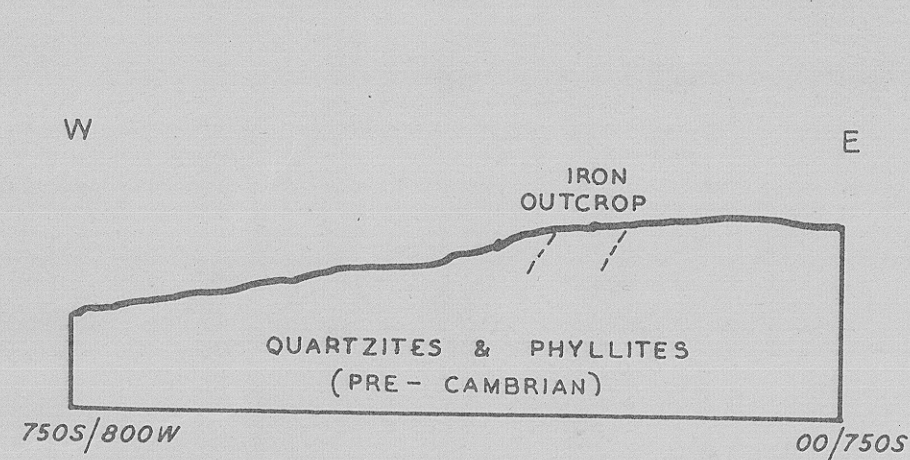
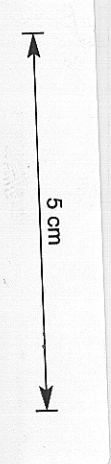


# HIGHCLERE IRON AREA

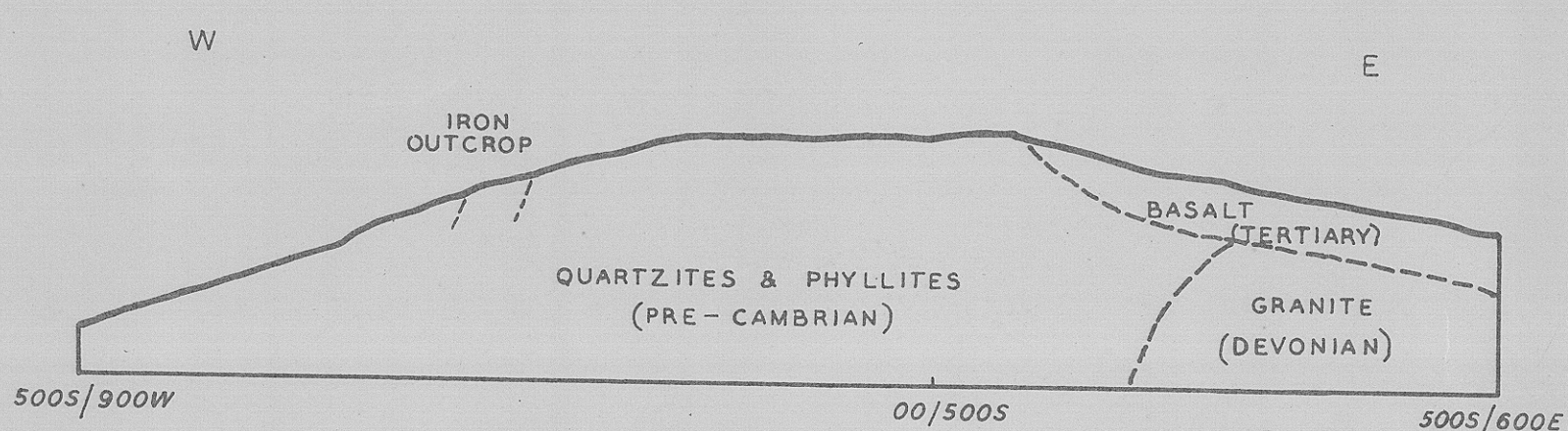
## GEOLOGICAL SECTIONS

(ALONG GEOPHYSICAL TRAVERSES)

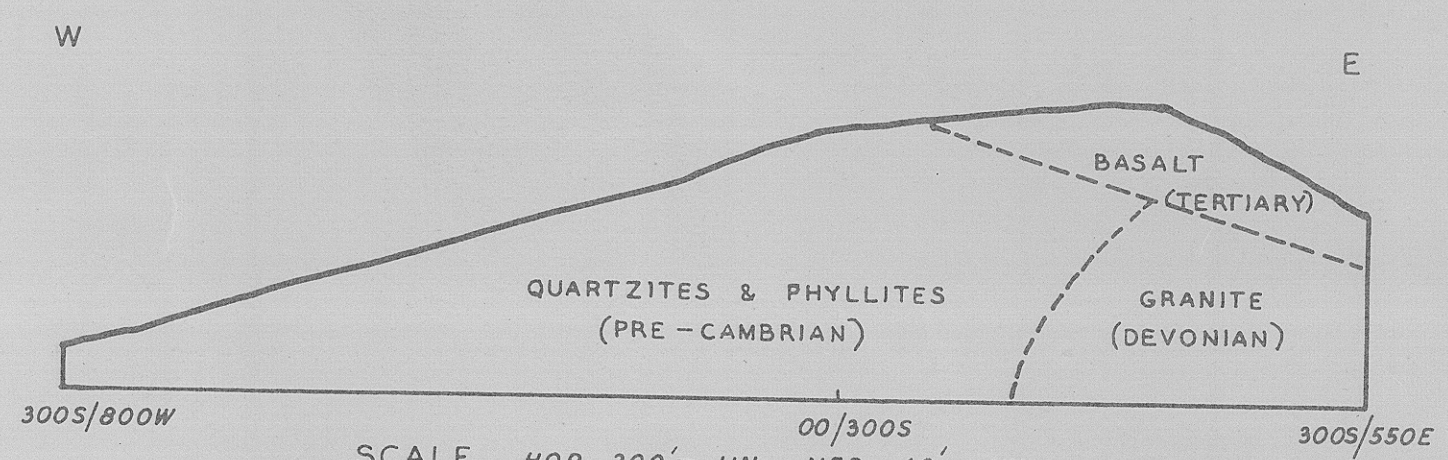
F. BLAKE GEOLOGIST  
APRIL 1957



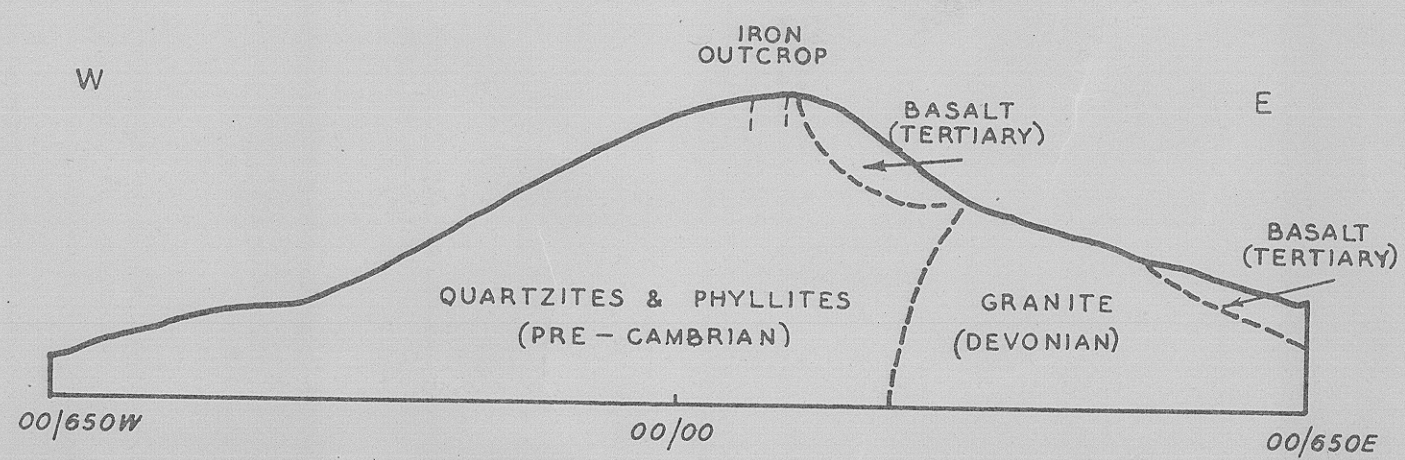
SCALE HOR. 200' = 1IN. VER. 40' = 1IN.



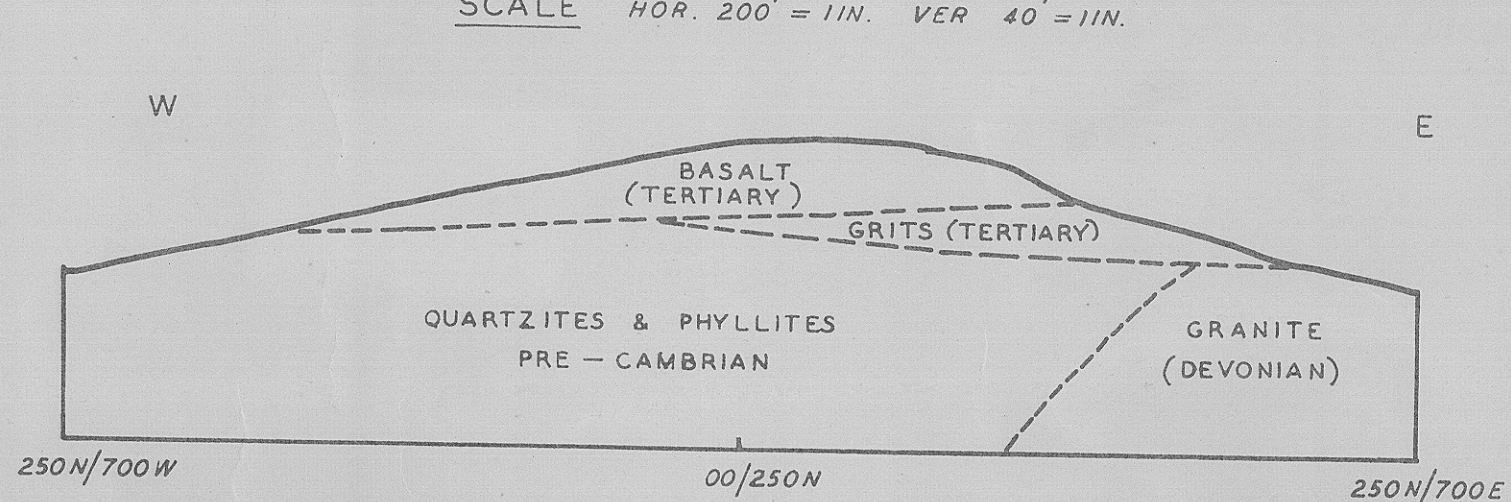
SCALE HOR. 200' = 1IN. VER. 40' = 1IN.



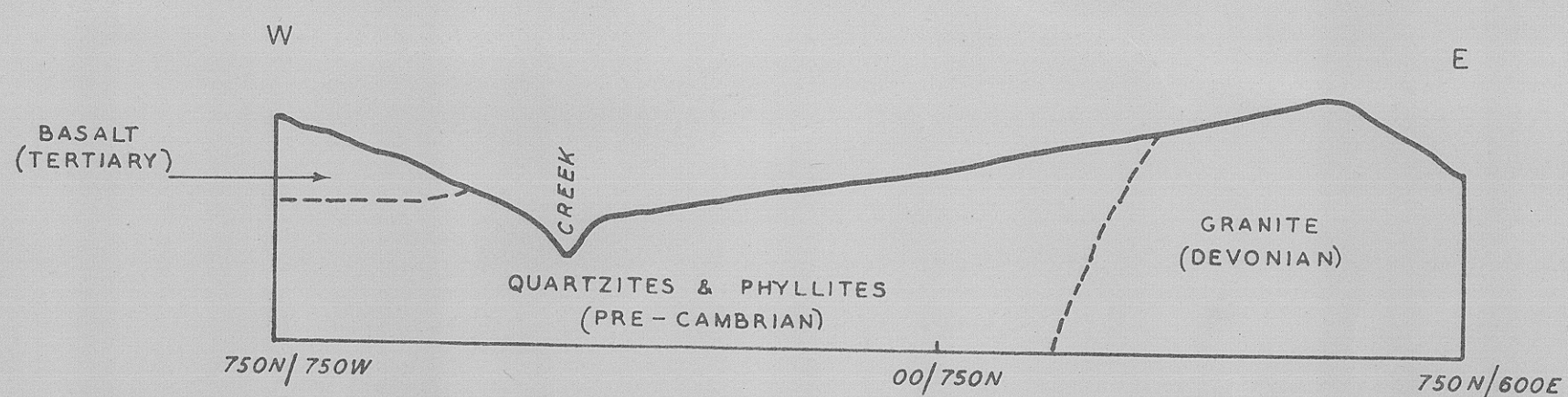
SCALE HOR. 200' = 1IN. VER. 40' = 1IN.



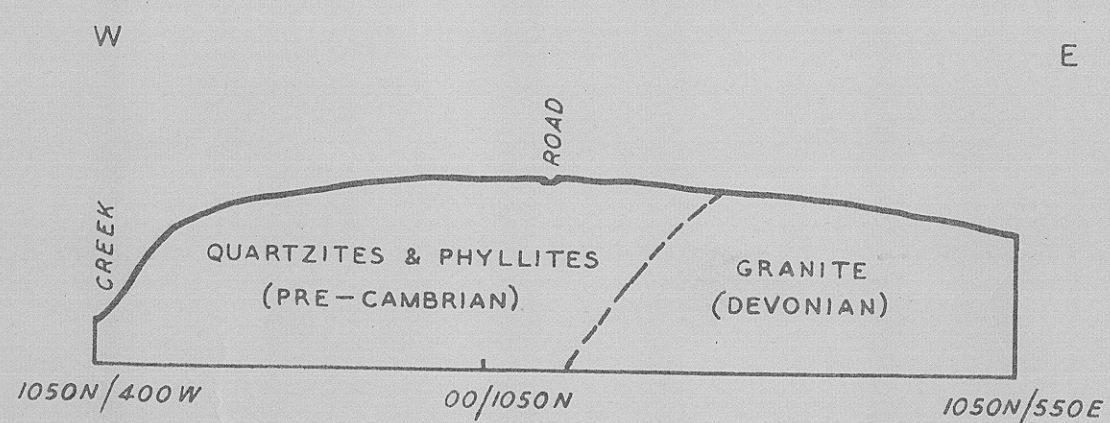
SCALE HOR. 200' = 1IN. VER. 40' = 1IN.



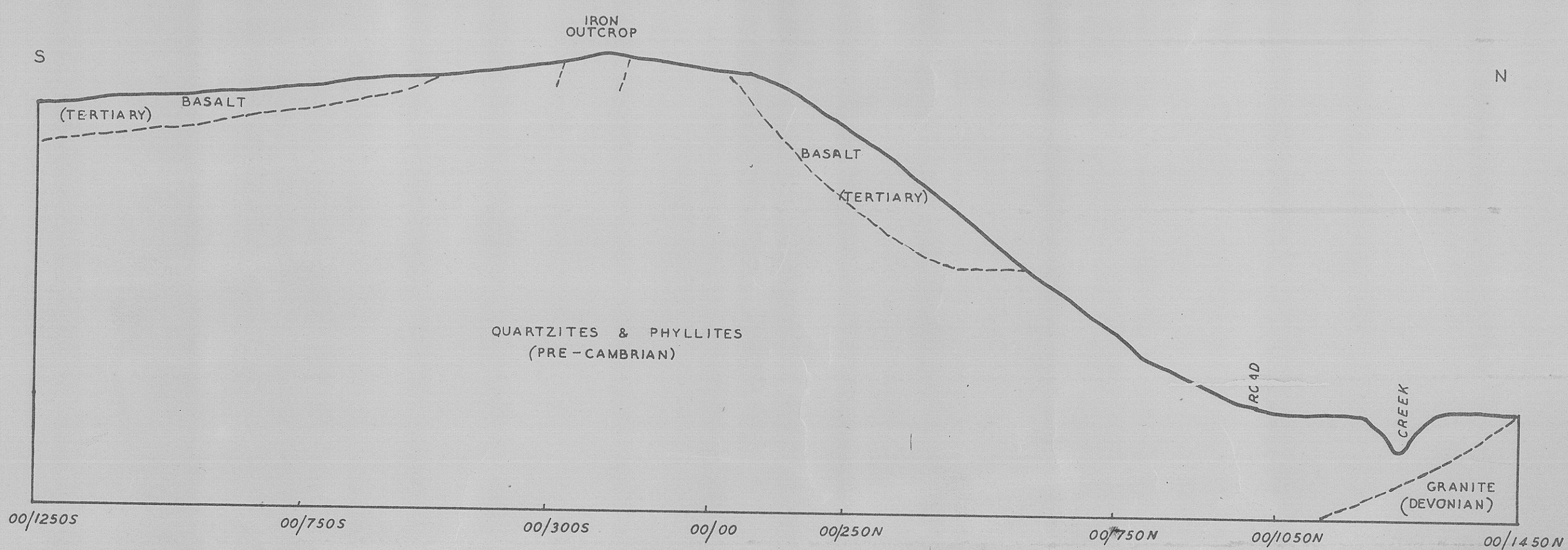
SCALE HOR. 200' = 1IN. VER. 40' = 1IN.



SCALE HOR. 200' = 1IN. VER. 40' = 1IN.



SCALE HOR. 200' = 1IN. VER. 20' = 1IN.



SCALE HOR. 200' = 1IN. VER. 40' = 1IN.

1456  
S31