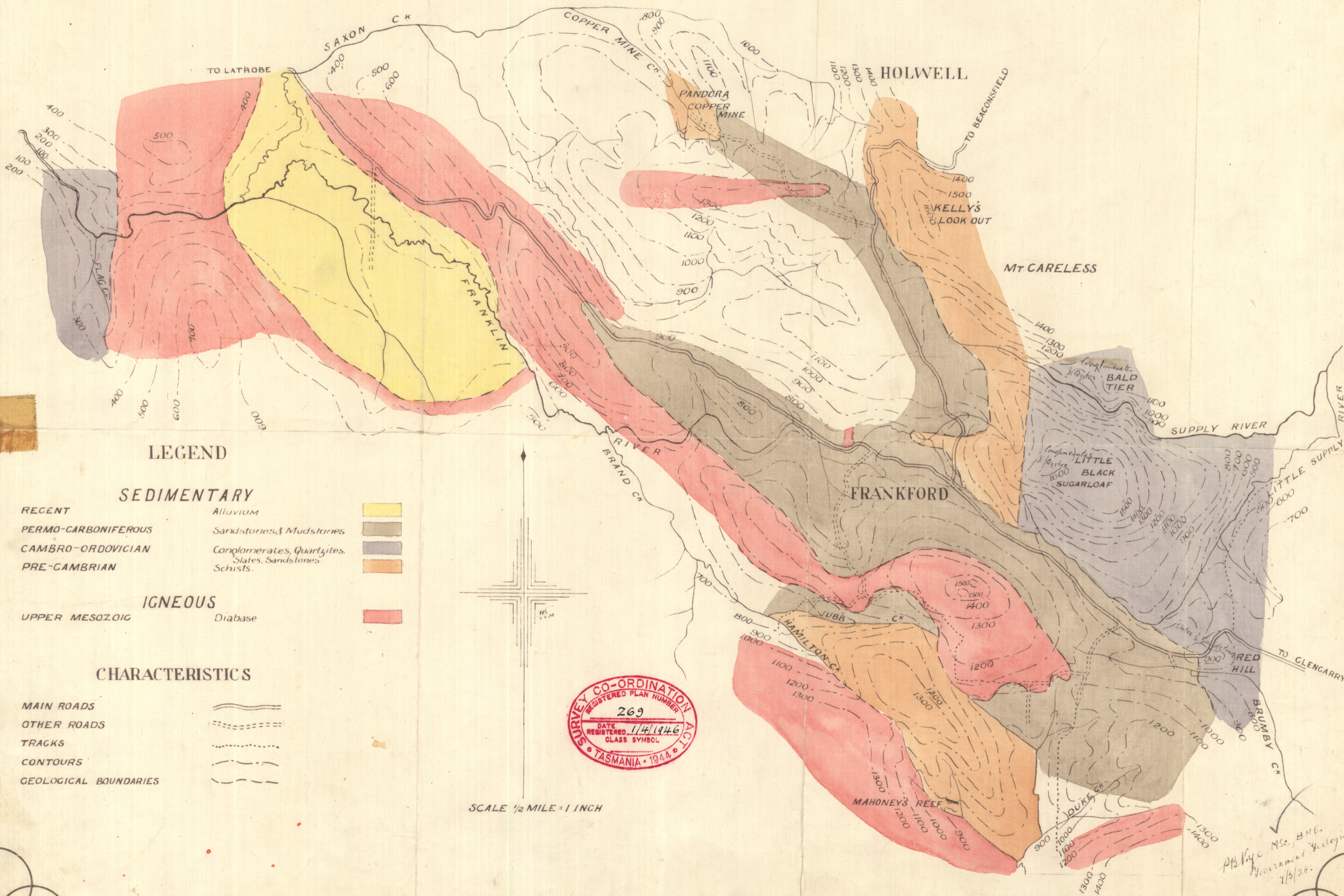


GEOLOGICAL SKETCH MAP

FRANKFORD DISTRICT



LEGEND

SEDIMENTARY

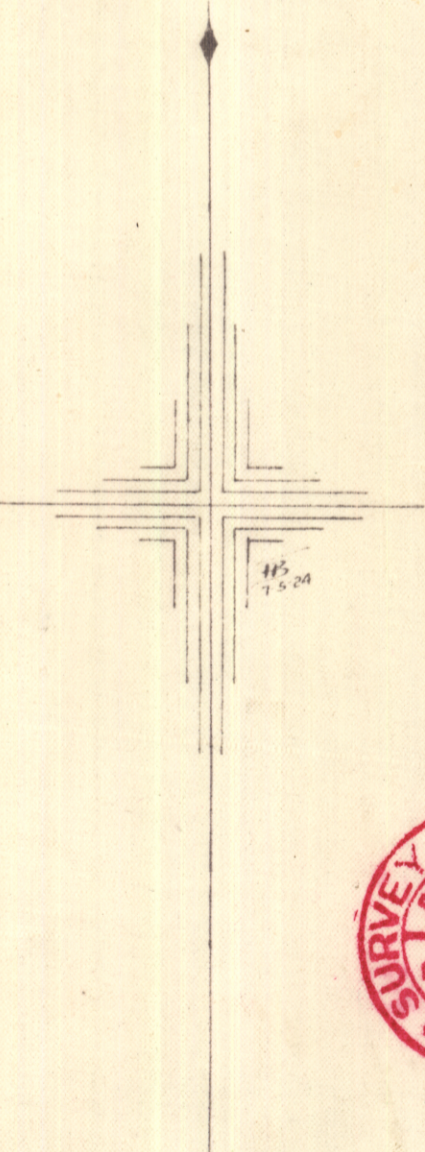
RECENT	Alluvium	
PERMO-CARBONIFEROUS	Sandstones & Mudstones	
CAMBRO-ORDOVICIAN	Conglomerates, Quartzites, Slates, Sandstones, Schists.	
PRE-CAMBRIAN	Schists.	

IGNEOUS

UPPER MESOZOIC	Diabase	
----------------	---------	--

CHARACTERISTICS

MAIN ROADS	
OTHER ROADS	
TRACKS	
CONTOURS	
GEOLOGICAL BOUNDARIES	



SCALE 1/2 MILE = 1 INCH

*PH. King M.Sc., B.M.E.
Government Geologist
1/5/24.*