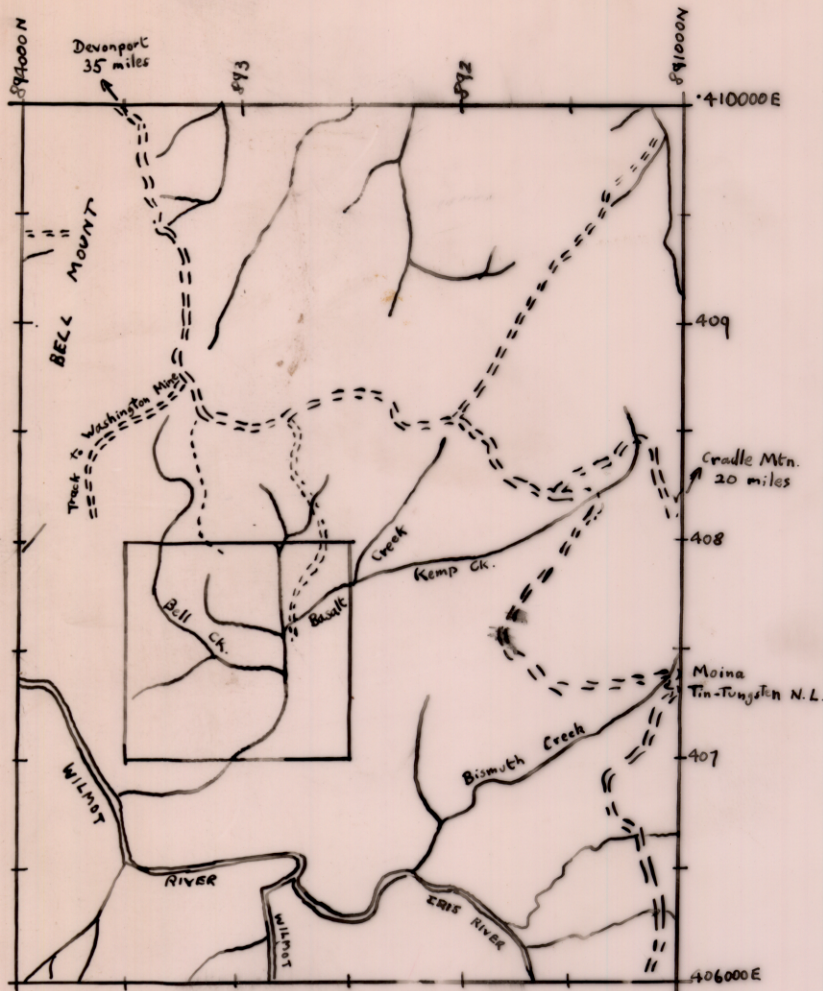


1514A

594

5 cm

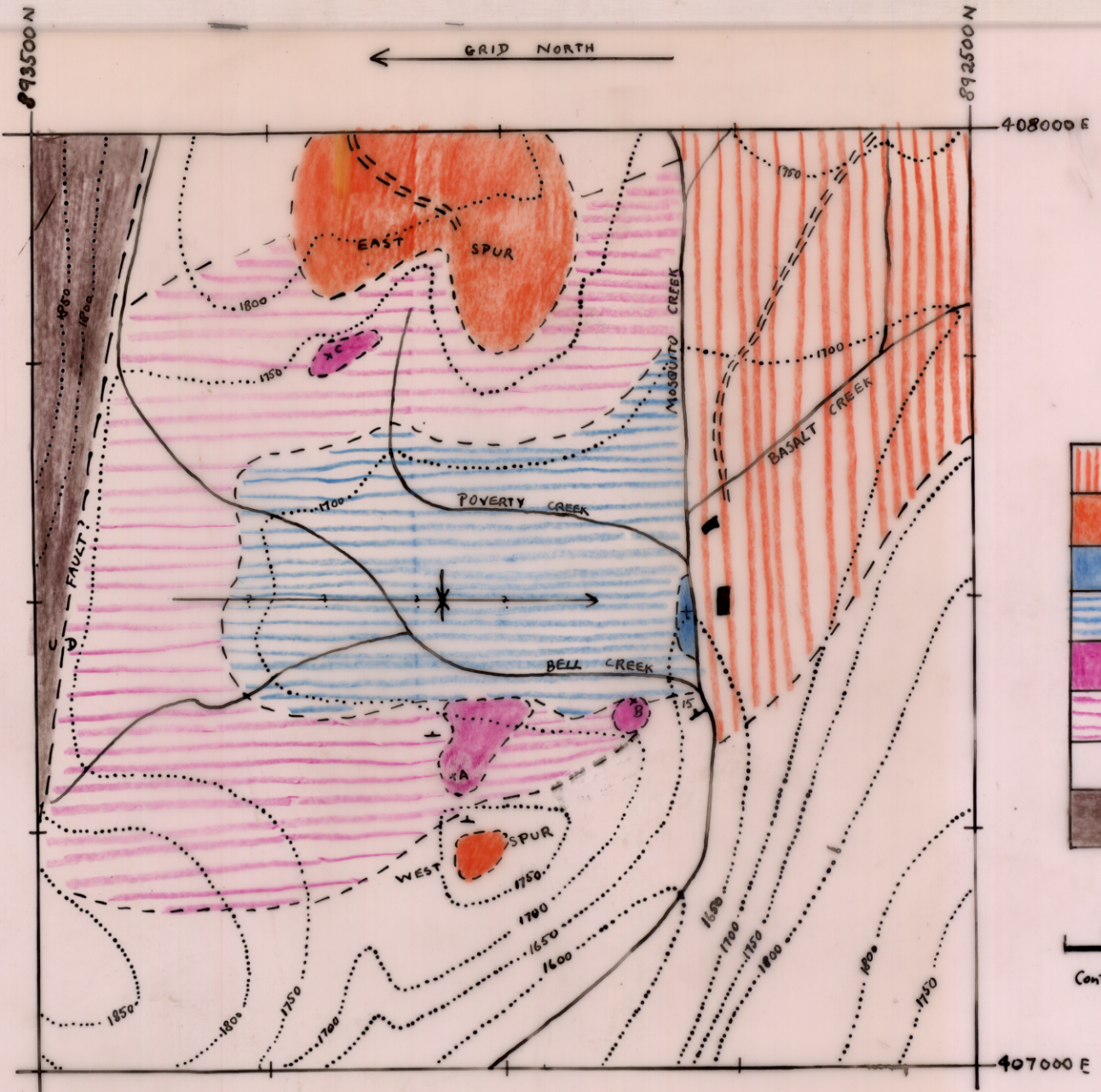


Locality Map

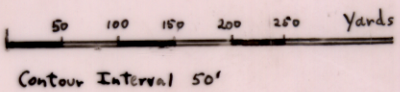
40 chns = 1"

Geological Sketch Map of

BELL MOUNT GOLD FIELD.



- Tertiary Basalt
- Sub-basaltic ferruginous clay and sandstone
- Gordon Limestone
- Black Pug
- White Clay at Shallow Depth
- Maximum conceivable extent of white clay
- Moina Sandstone
- Cambrian



Geological Sketch Map of BELL MOUNT GOLD FIELD

Kearney & Burns  
17/9/57