

# LINDSAY TIN MINE

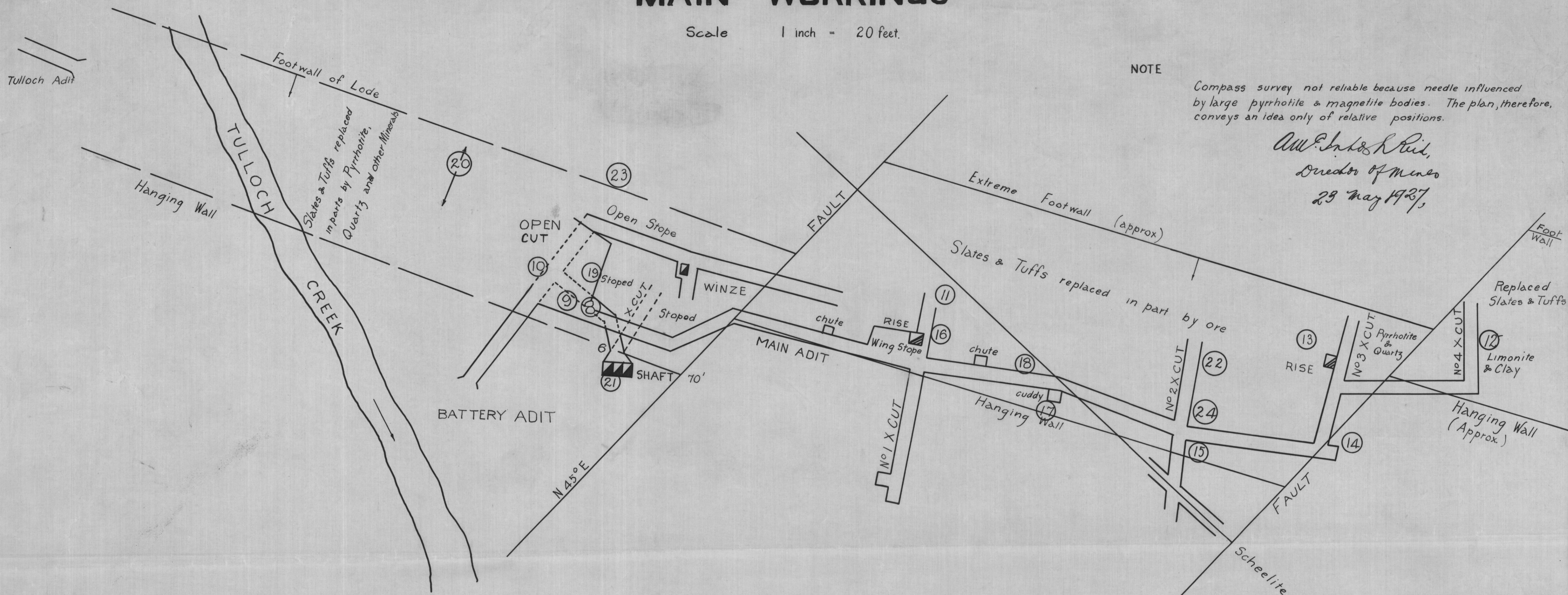
## MAIN WORKINGS

Scale 1 inch = 20 feet.

NOTE

Compass survey not reliable because needle influenced by large pyrrhotite & magnetite bodies. The plan, therefore, conveys an idea only of relative positions.

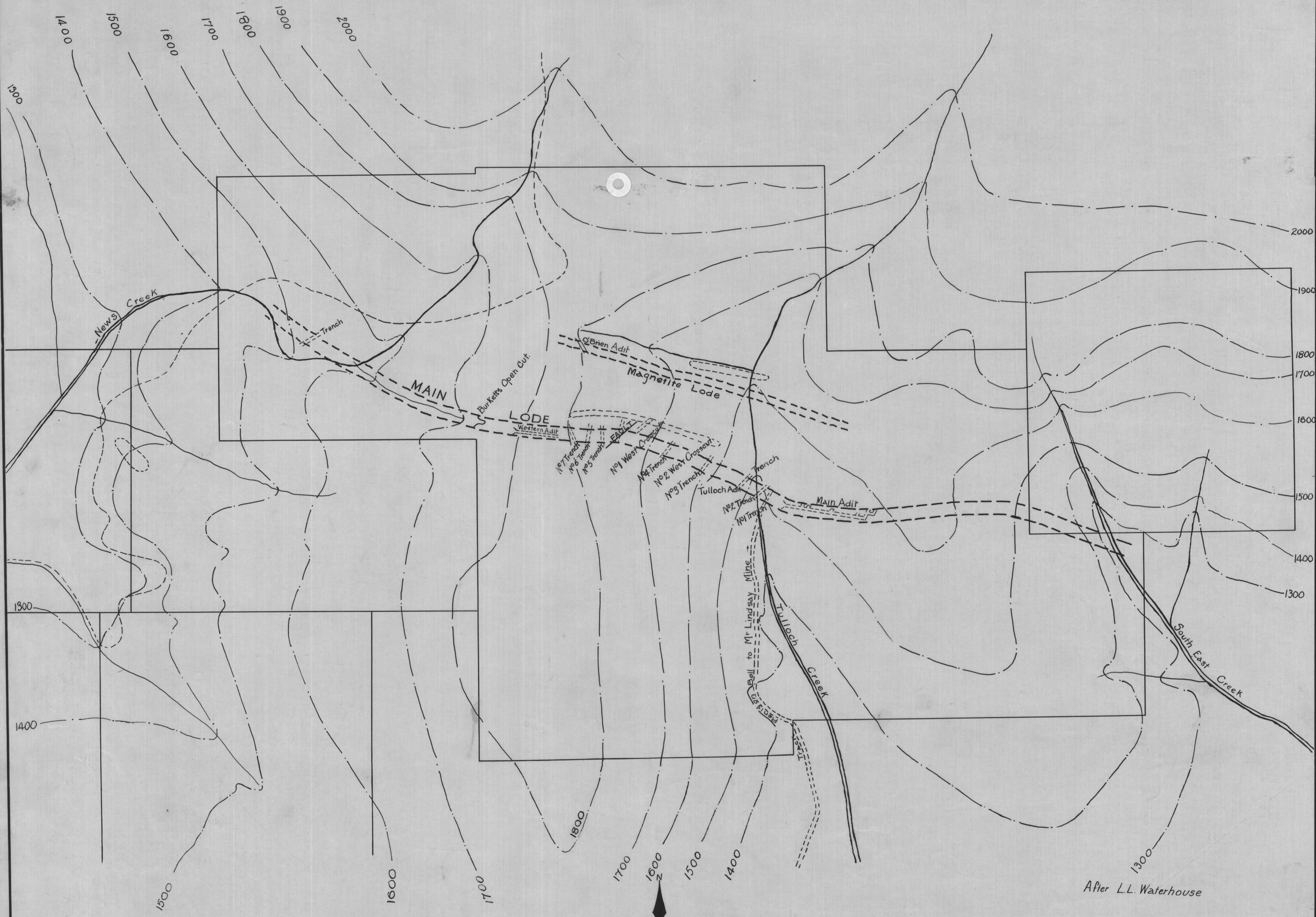
*Wm. J. ...*  
 Director of Mines  
 29 May 1937



## ASSAYS OF SAMPLES

SAMPLE NUMBER	NAME OF WORKINGS	NATURE OF ORE	WIDTH OF SAMPLE	TIN CONTENT %	SAMPLE NUMBER	NAME OF WORKINGS	NATURE OF ORE	WIDTH OF SAMPLE	TIN CONTENT %
1	Burkett Open Cut	Clay & Limonite	8	Trace	13	Rise No. 3 Crosscut	Gossan-Quartz	8	0.26
2	West Adit	Pyrrhotite-Magnetite		Trace	14	No. 3 Crosscut	Pyrite Quartz Clay	10	Trace
3	O'Brien Adit	Pyrrhotite-Magnetite		Nil	15	No. 2 Crosscut South	Clay & Limonite	6	0.13
4	West Crosscut	Pyrrhotite-Magnetite		0.1	16	No. 1 Crosscut North	Pyrite Quartz	10	0.76
5	No. 2 West Crosscut	Pyrrhotite-Magnetite		Nil	17	Cuddyoff Main Drive	Gossan	4.5	0.13
6	Battery Adit	Gossan-Quartz	3	2.15	18	Main Adit Drive	Quartz-Marcasite	8	6.50
7	Battery Adit	Gossan-Quartz	3	2.40	19	Open Cut Main level	Gossan	12	1.25
8	Battery Adit	Quartz-Gossan	5	5.40	20	Outcrop	Pyrrhotite-Quartz	20	0.30
9	Battery Adit	Quartz-Gossan	3	2.41	21	Shaft	Pyrrhotite-Magnetite		0.10
10	Battery Adit	Pyrrhotite-Quartz	8	9.21	22	No. 2 Crosscut	Pyrrhotite Quartz	18	2.40
11	No. 2 Crosscut	Pyrrhotite	9	2.63	23	Open Slope	Gossan Clay	15	1.75
12	No. 4 Crosscut	Chloride Clay	10	0.31	24	No. 2 Crosscut	Pyrrhotite Quartz	10	1.80

## FEATURE PLAN



### CHARACTERISTICS

- Geological Boundaries
- Lodes
- Contours

### LEGEND

- SEDIMENTARY
- CAMBRO-ORDOVICIAN Tuffs, Volcanic Breccia, Slates & Sandstones
- IGNEOUS
- DEVONIAN Granite & Granite Porphyry

Scale

