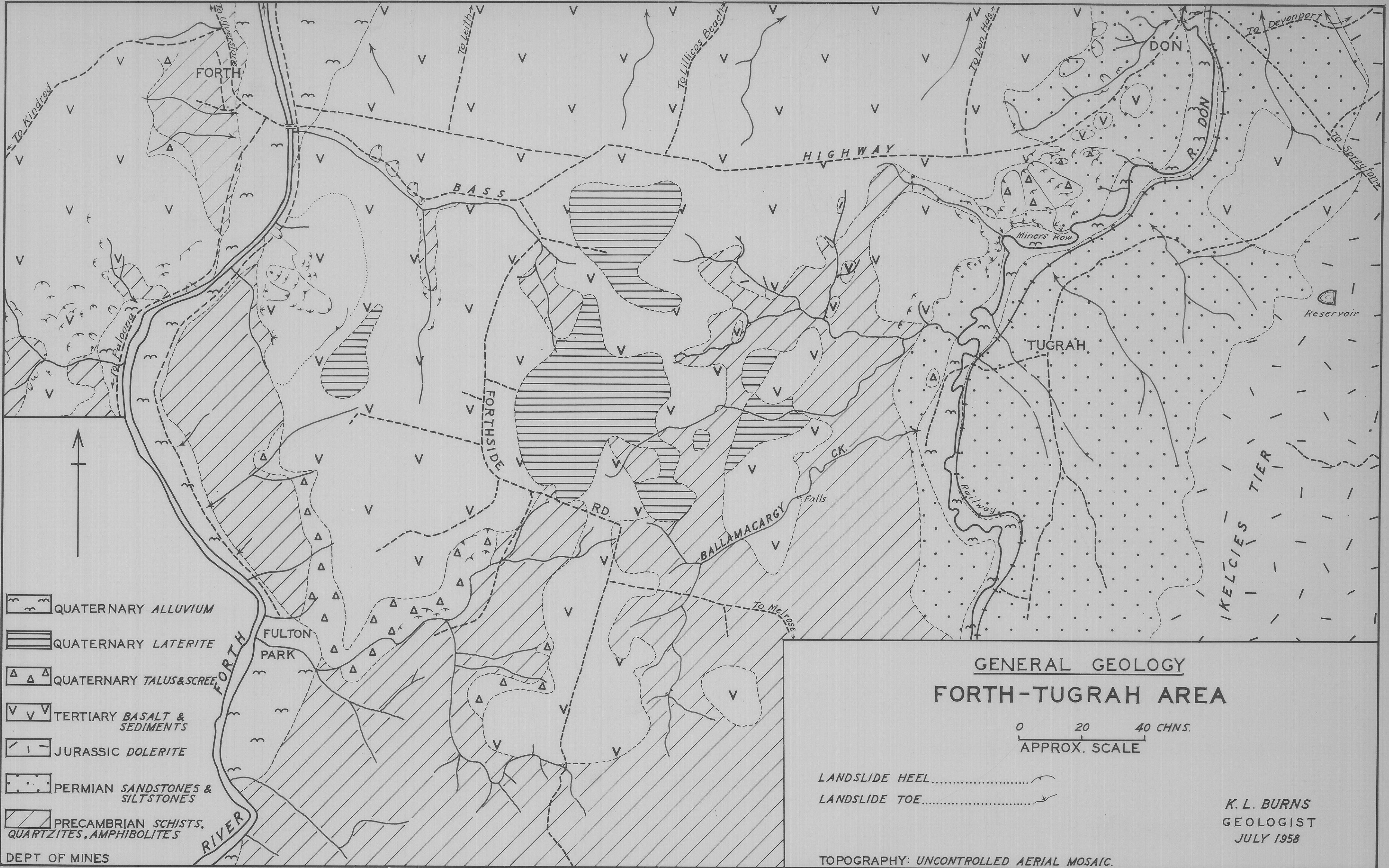


5 cm



- QUATERNARY ALLUVIUM
- QUATERNARY LATERITE
- QUATERNARY TALUS & SCREE
- TERTIARY BASALT & SEDIMENTS
- JURASSIC DOLERITE
- PERMIAN SANDSTONES & SILTSTONES
- PRECAMBRIAN SCHISTS, QUARTZITES, AMPHIBOLITES

GENERAL GEOLOGY  
 FORTH-TUGRAH AREA

0 20 40 CHNS.  
 APPROX. SCALE

LANDSLIDE HEEL.....  
 LANDSLIDE TOE.....

K. L. BURNS  
 GEOLOGIST  
 JULY 1958

TOPOGRAPHY: UNCONTROLLED AERIAL MOSAIC.