

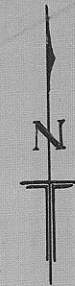
1605 A

678

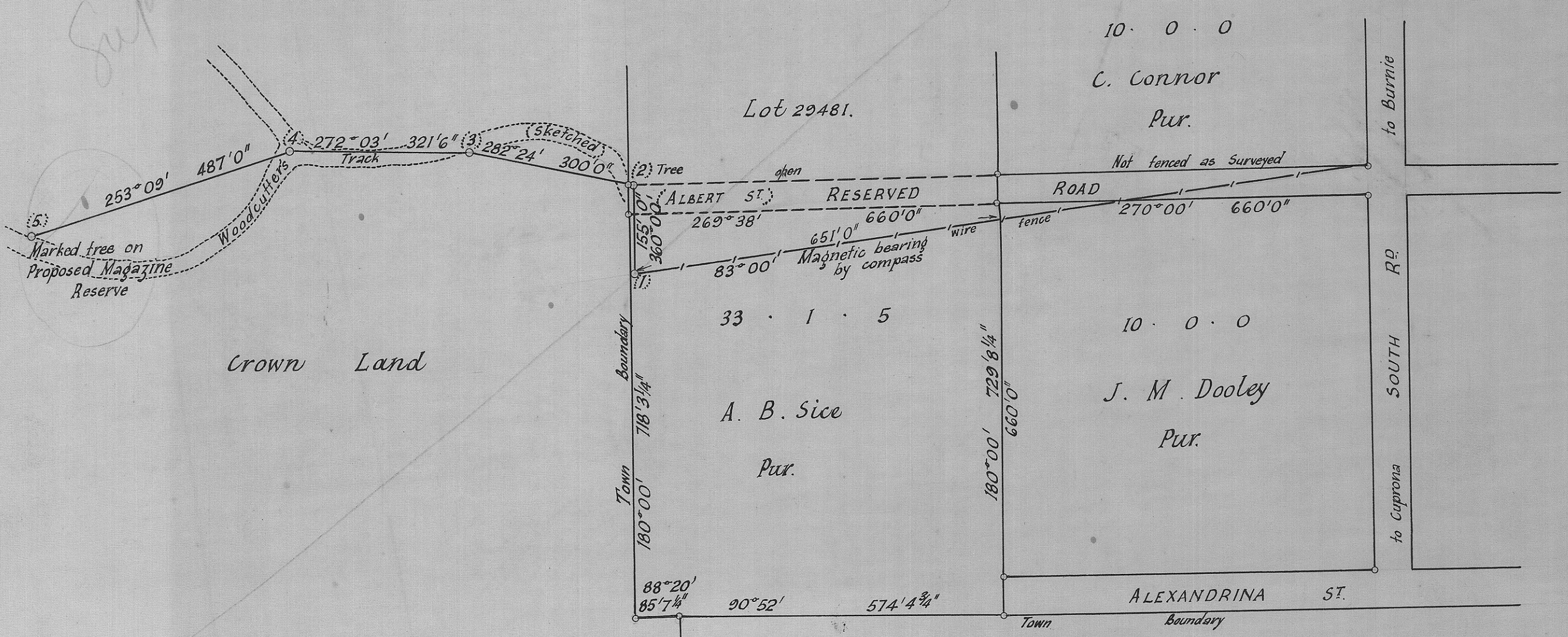
5 cm

COUNTY OF DEVON
VICINITY OF HEYBRIDGE
Scale: ~ 200 ft. to an inch

Compass Survey of bush track
from Albert St. to Proposed Magazine
Reserve



Superseded



Drawn in Office from field notes
by L. F. Egan 16.9.58

DEPT. OF MINES
1605-29

Lot 7966.
J. M. Dooley
Pur.

(Sgd.) L. F. Egan.
Inspector of Mines
11.9.58