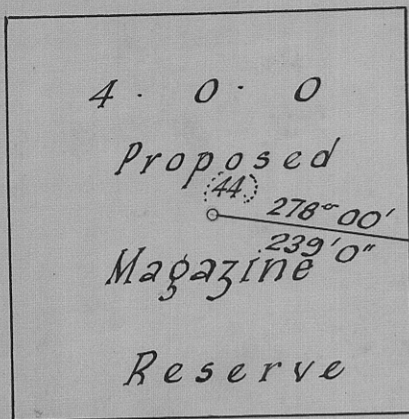


COUNTY OF DEVON

VICINITY OF HEYBRIDGE.

Scale:- 200 feet to an inch

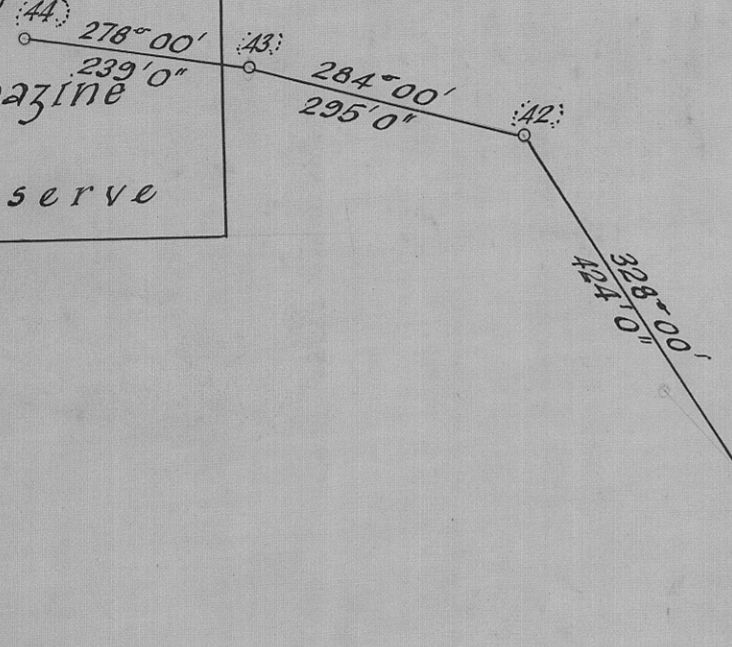
Compass Survey of connections
from Albert St. along bush track
to Proposed Magazine Reserve.



4.0.0

Proposed
Magazine

Reserve



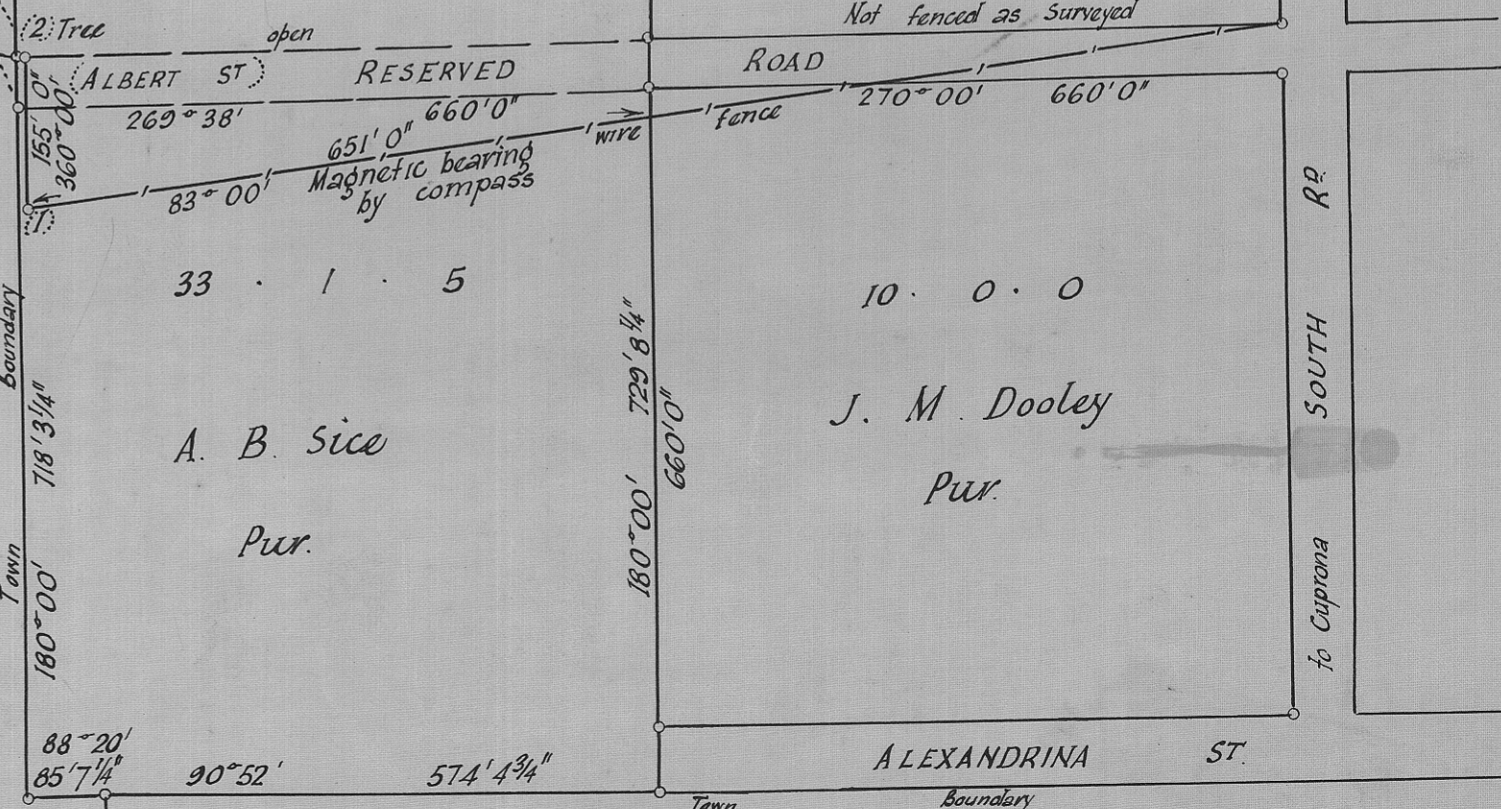
Crown Land

Lot 29481.

10.0.0

C. Connor
Pur.

Not fenced as surveyed



33.1.5

A. B. Sice

Pur.

10.0.0

J. M. Dooley
Pur.

ALEXANDRINA ST.

Lot 1966.

J. M. Dooley

Pur.

(Sgd) L. F. Egan
Inspector of Mines
11.9.58

Drawn in Office from field
notes by L. F. Egan 25.11.58

1605 B

679

5 cm