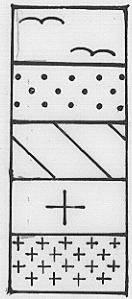
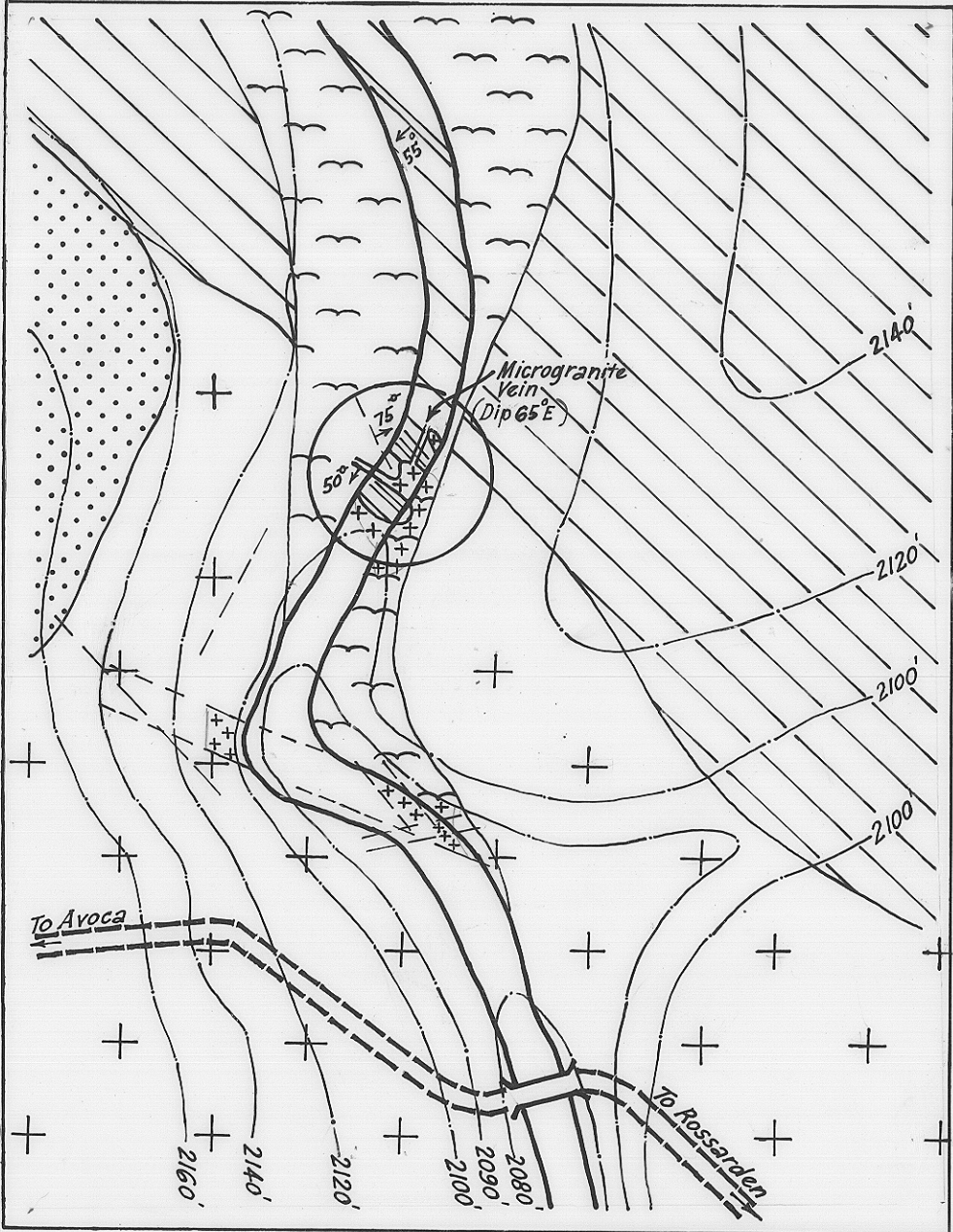


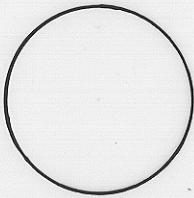
GEOLOGICAL SKETCH MAP OF THE GRANITE & MATHINNA GROUP CONTACT, NORTH OF ROSSARDEN BRIDGE

5 cm

MAGNETIC
N

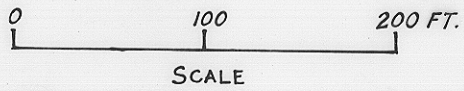


ALLUVIUM
 PERMIAN
 MATHINNA GROUP
 GRANITE } DEVONIAN
 MICROGRANITE }



Encloses areas shown in Figs. 5 & 6.

55° Dip of Mathinna Group
 75° Dip of Joint



1644-48

111

1644

1644
 ← Reduce to 24 cms →