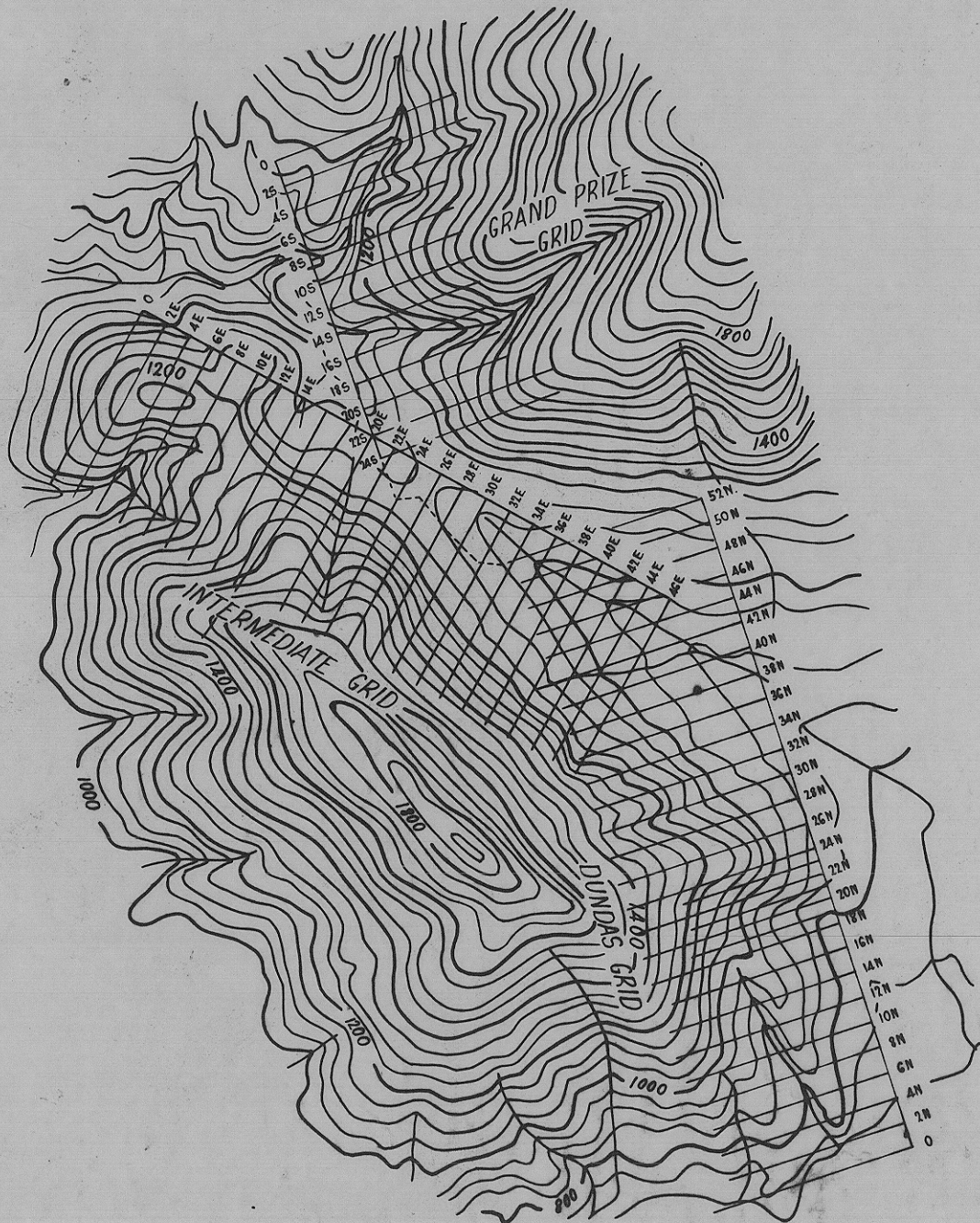


1721

776

5 cm



DEPARTMENT OF THE INTERIOR
A. C. T. SURVEY SECTION

TASMANIA
Grand Prize, Intermediate & Dundas Grids.
Survey for Geophysical Purposes.

Surveyed By: B. Lynch. Mar '60

Scale: 20 Chains to an inch

Drawn By: P. Huddy

Field Books: B.M.R. F188-196.

Examined By: *flc* 7-4-60

Plan No: Misc. 118.

DEPT. OF MINES.
1721 -50