

1757

793

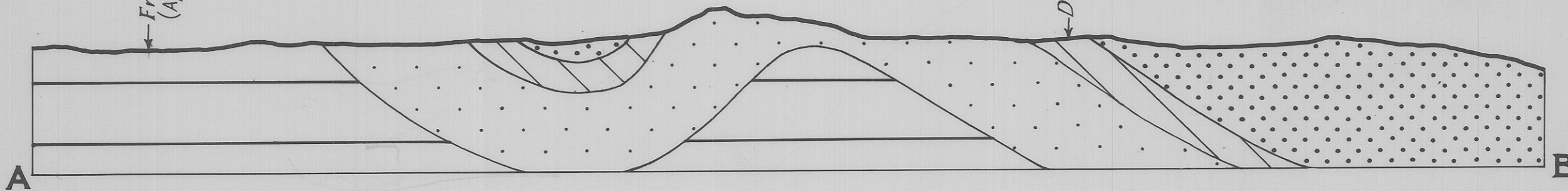
5 cm

GEOLOGICAL SKETCH SECTION RAPID RIVER AREA



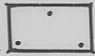
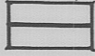
0 1 2 MILES

Frankland River
(Approx. 700' above S.L.)

Dodds Creek



PRECAMBRIAN

- SILTSTONES, SANDSTONES & GREYWACKES 
- BLACK SILTSTONES, SLATES 
- SILTSTONES, BANDED SILTSTONES 
- QUARTZITES & SANDSTONES 

W.L. MATTHEWS
GEOLOGIST
17th JULY 1960