

5 cm

LEGEND

QUATERNARY

- RECENT DOWNWASH OF MANGANIFEROUS ("BLACK") GOSSAN, RECENT IRONSTONE - BRECCIA, RECENT ALLUVIUM, OLDER ALLUVIUM AND DOWNWASH.

MIDDLE CAMBRIAN DUNDAS GROUP

- FERNFLOW CONGLOMERATE
- COMET SLATE
- FERNFIELDS CONGLOMERATE
- BREWERY JUNCTION SLATE TUFF
- RAZORBACK CONGLOMERATE
- HODGE SLATE
- GREYWACKE - CONGLOMERATE
- SERPENTINE AND PYROXENITE.

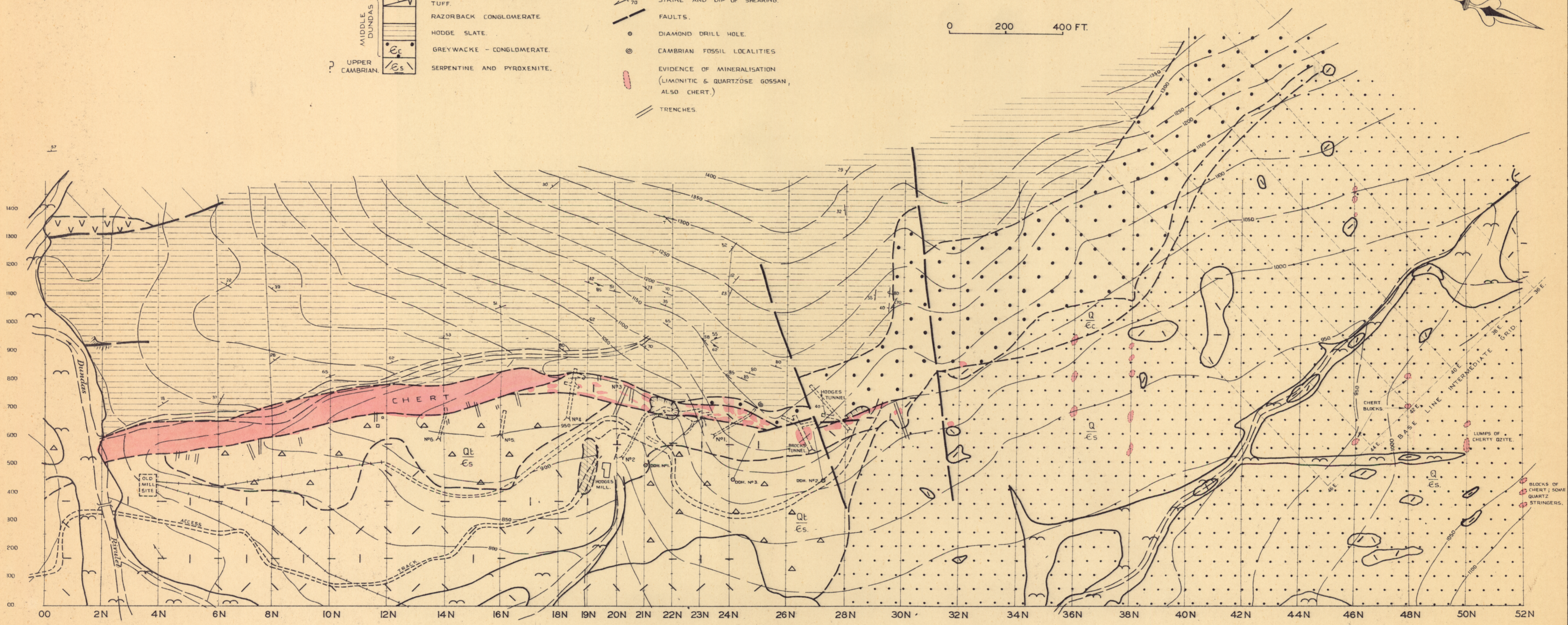
UPPER CAMBRIAN

- STRIKE AND DIP OF BEDDING.
- OVERTURNED BED.
- STRIKE AND DIP OF JOINTS
- STRIKE AND DIP OF SHEARING.
- FAULTS.
- DIAMOND DRILL HOLE.
- CAMBRIAN FOSSIL LOCALITIES
- EVIDENCE OF MINERALISATION (LIMONITIC & QUARTZOSE GOSSAN, ALSO CHERT.)
- TRENCHES

GEOLOGICAL MAP RAZORBACK GRID.

0 200 400 FT.

True North



B A S E L I N E D U N D A S G R I D

GEOLOGY BY  
A. H. BLISSETT & A. B. GULLINE  
1960.