

LEGEND

QUATERNARY

- Qt RECENT DOWNWASH OF MANGANIFEROUS ("BLACK") GOSSAN, RECENT IRONSTONE - BRECCIA.
- Q RECENT ALLUVIUM.
- Q OLDER ALLUVIUM AND DOWNWASH.

MIDDLE CAMBRIAN DUNDAS GROUP

- FERNFLOW CONGLOMERATE
- COMET SLATE
- FERNFIELDS CONGLOMERATE
- BREWERY JUNCTION SLATE
- TUFF
- RAZORBACK CONGLOMERATE
- HODGE SLATE
- Serpentine and Pyroxenite.

UPPER CAMBRIAN

- Es
- Qs

- 53 STRIKE AND DIP OF BEDDING
- 80 OVERTURNED BED
- 62 STRIKE AND DIP OF JOINTS
- 70 STRIKE AND DIP OF SHEARING
- FAULTS
- DIAMOND DRILL HOLE
- CAMBRIAN FOSSIL LOCALITIES
- EVIDENCE OF MINERALISATION (LIMONITIC & QUARTZOSE GOSSAN, ALSO CHERT)
- TRENCHES

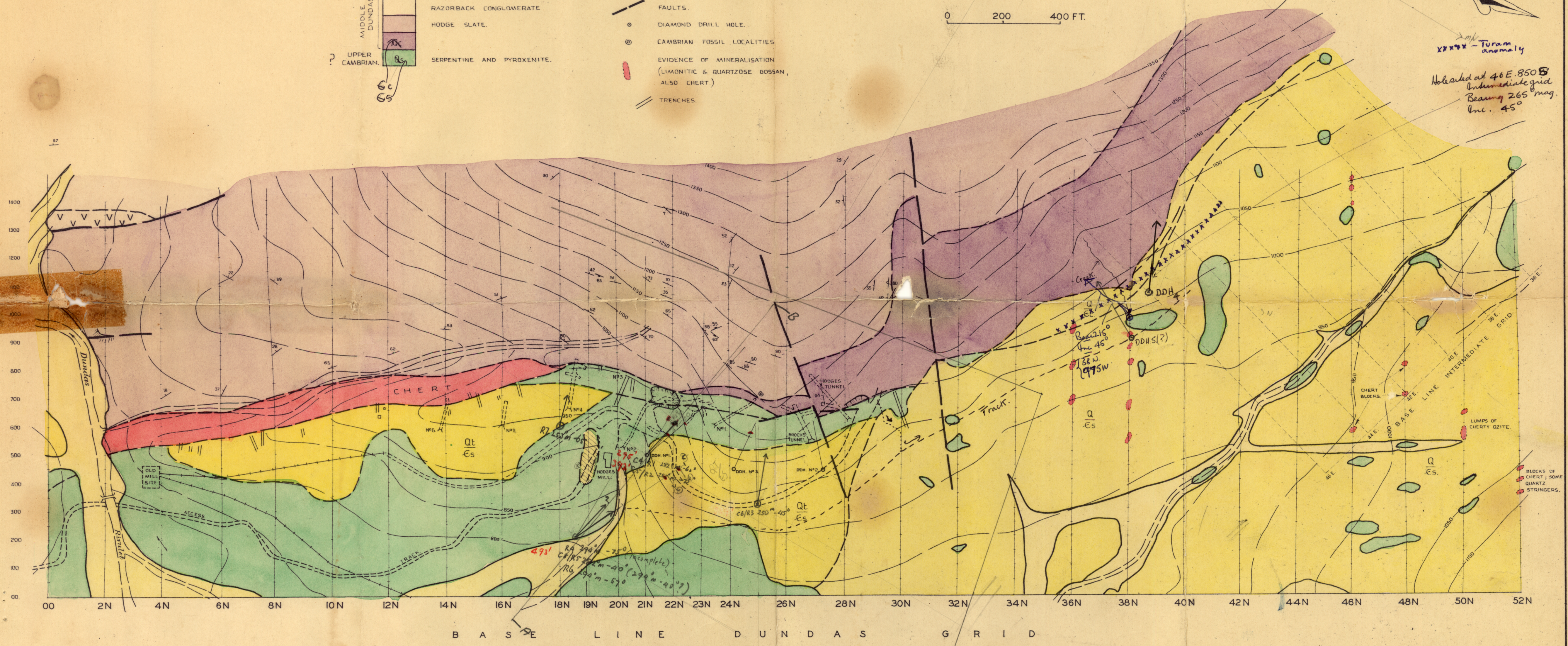
GEOLOGICAL MAP RAZORBACK GRID.

0 200 400 FT.

If multiple mineralization in area...  
 another hole should be drilled from 38N 400W (Razorback area) (DDH 5).

XXXX - Turam anomaly

Hole at 46E 850B  
 Intermediate grid  
 Bearing 265 mag.  
 Inc. 45°



B A S E L I N E D U N D A S G R I D

GEOLOGY BY  
 A. H. BLISSETT & A. B. GULLINE  
 1960.