

5 cm

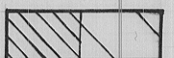
IRON CLIFFS AREA AROUND D.D. HOLE I.

0 50 100 FT.

OUTCROP PROBABLE EXTENT.

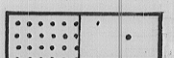


IRON ORE.



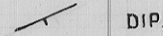
CAMBRIAN.

DUNDAS GROUP - MUDSTONES, ETC.



PRECAMBRIAN.

ROCKY CAPE GROUP - MUDSTONES & SANDSTONES.



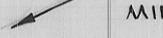
DIP.



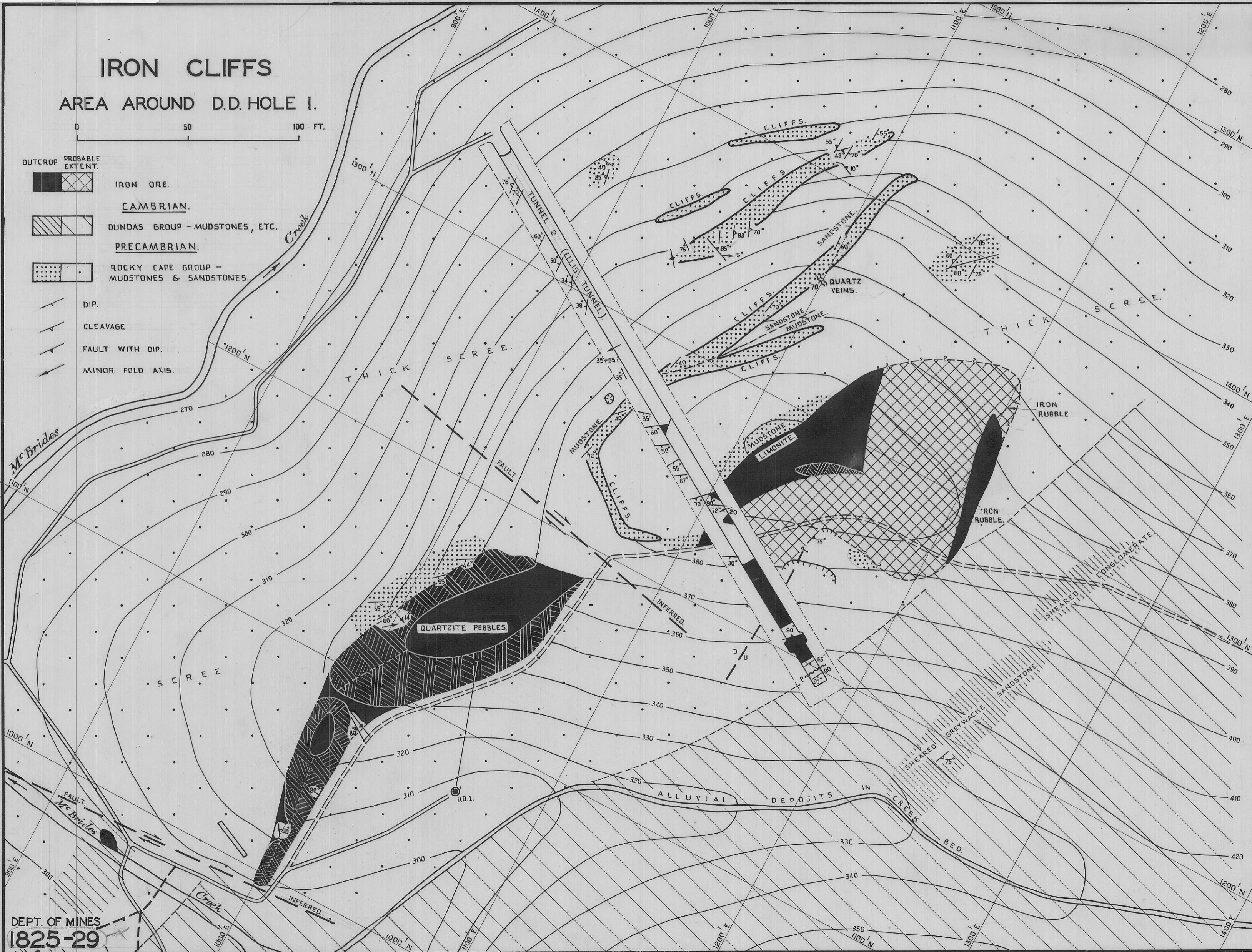
CLEAVAGE



FAULT WITH DIP.



MINOR FOLD AXIS.



← Reduce to 1/2 length →