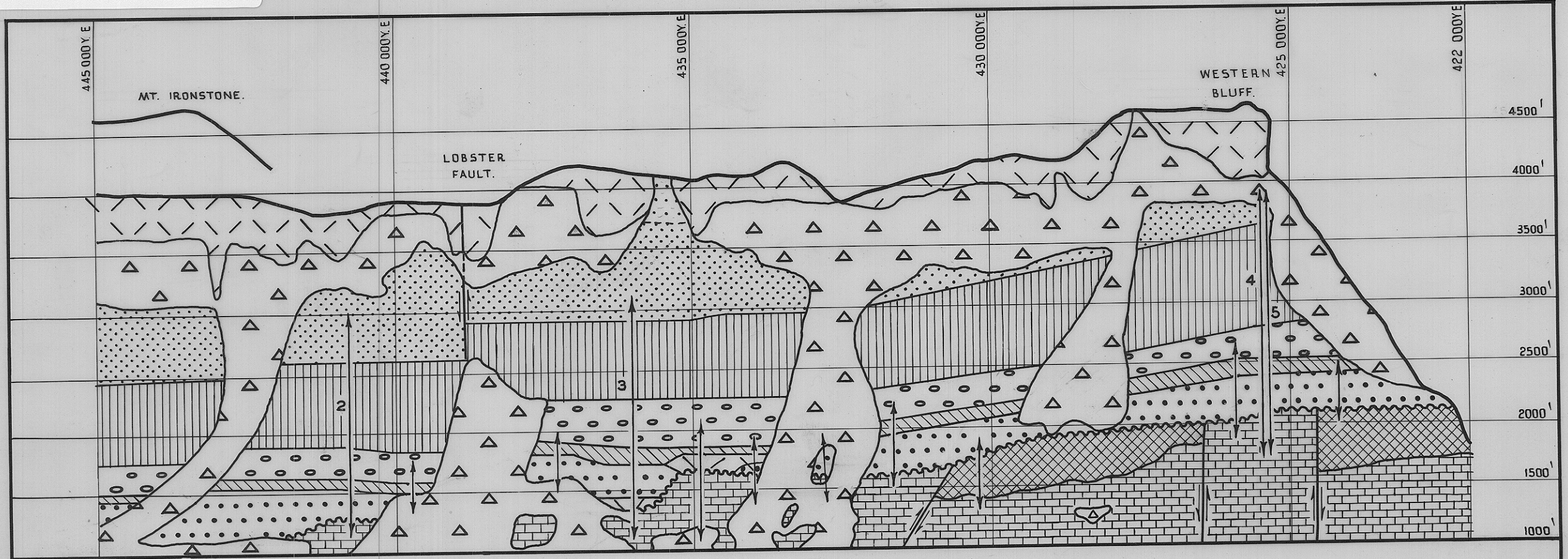


1844

873

5 cm



1000' to 4500'

QUATERNARY.

△ △ TALUS & SCREE

JURASSIC

▨ DOLERITE

TRIASSIC

· · · UNDIFFERENTIATED

· · · ROSS SANDSTONE.

PERMIAN

▨ FERNTREE MUDSTONE.

▨ WOODBRIDGE GLAGIALS.

▨ LIFFEY SANDSTONE.

· · · KANSAS CREEK BEDS.

SILURIAN.

▨ CROTTY SANDSTONE

ORDOVICIAN

▨ GORDON LIMESTONE.

LONGITUDINAL PROJECTION ONTO E-W PLANE OF
SURFACE GEOLOGY - WESTERN TIERS

VERTICAL EXAGGERATION ~6:1

LOCATION OF TRAVERSES

DEPT. OF MINES
1844-45.

K.L. BURNS
GEOLOGIST.
1957