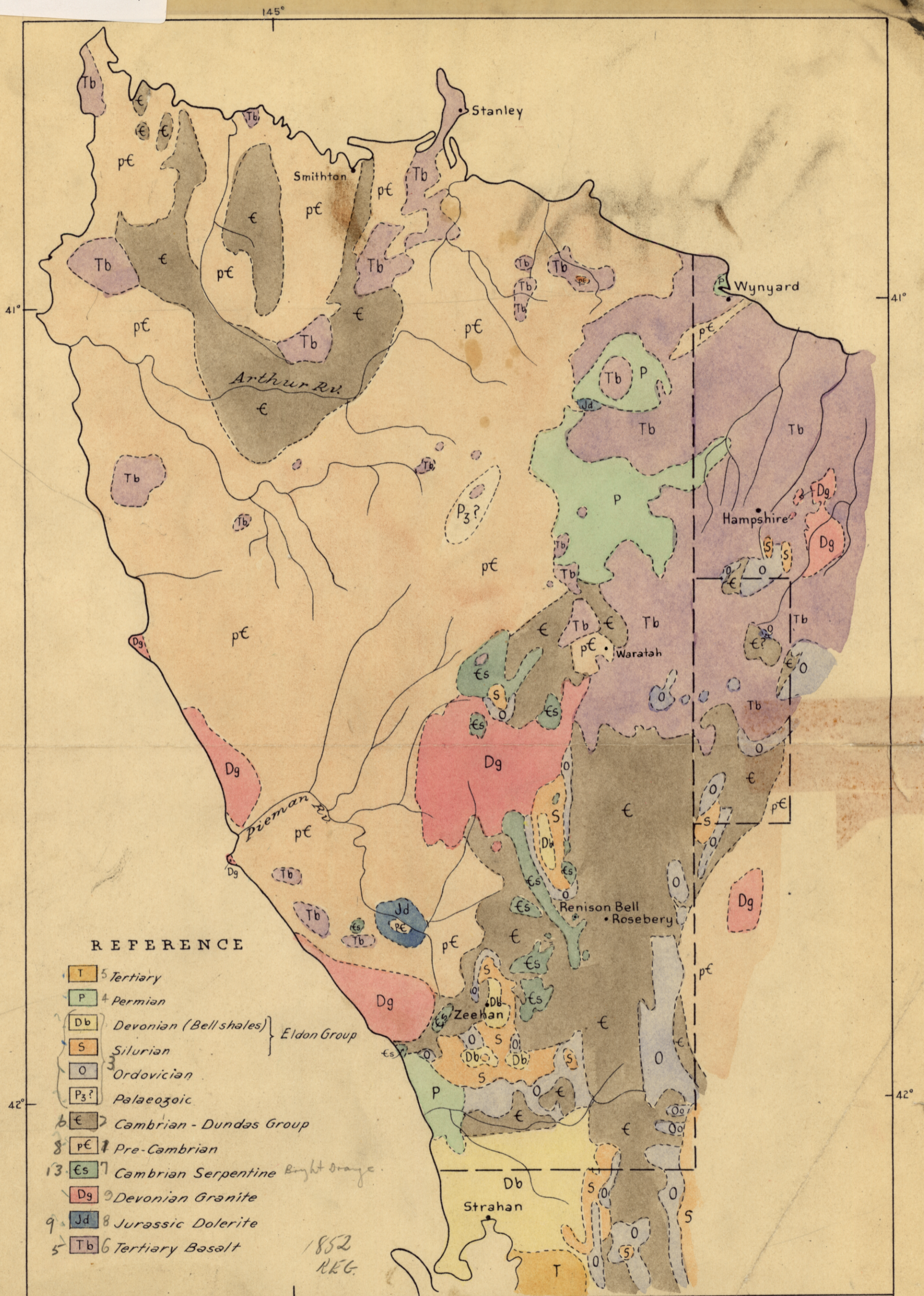


1852

879

5 cm



REFERENCE

- 5 Tertiary
- 4 Permian
- Devonian (Bell shales) } Eldon Group
- 3 Silurian
- 2 Ordovician
- 1 Palaeozoic
- 6 Cambrian - Dundas Group
- 7 Pre-Cambrian
- 13 Es 7 Cambrian Serpentine *Bright orange*
- 9 Dg 9 Devonian Granite
- 8 Jd 8 Jurassic Dolerite
- 5 Tb 6 Tertiary Basalt

1852 REG.

1852-REG.

RIO AUSTRALIAN EXPLORATION PTY LIMITED

GEOLOGICAL SKETCH MAP OF SPL's 302 & 311 N.W. TASMANIA

Scale 8 miles to inch Prp/7/100 21-1-'57