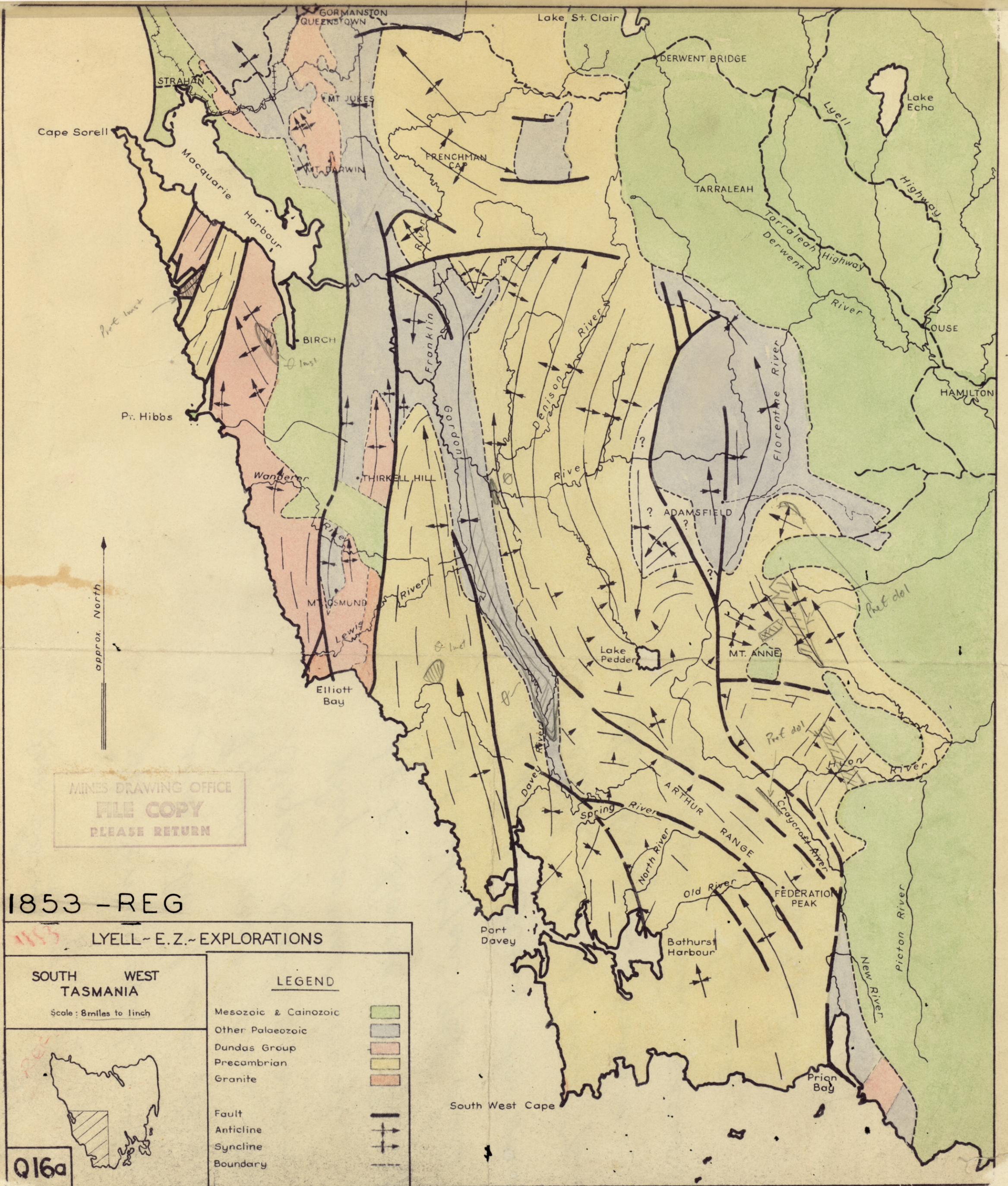
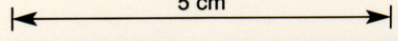


1853

880

5 cm



approx. North

MINES DRAWING OFFICE
FILE COPY
PLEASE RETURN

1853 - REG

1853 LYELL - E. Z. - EXPLORATIONS

SOUTH WEST TASMANIA
Scale: 8 miles to 1 inch

LEGEND	
Mesozoic & Cainozoic	
Other Palaeozoic	
Dundas Group	
Precambrian	
Granite	
Fault	
Anticline	
Syncline	
Boundary	



Q16a

Duplicate in TCR 59-292