

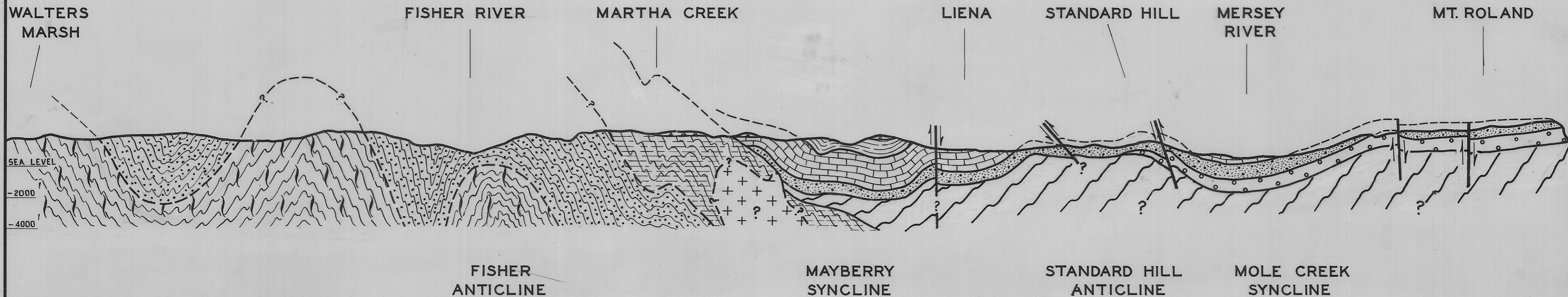
5 cm

SSW.

NNE.

# GEOLOGICAL SECTION WALTERS MARSH TO MOUNT ROLAND

0 1 2 3 MLS



- PERMIAN SYSTEM**
- SILURIAN SYSTEM**
- ORDOVICIAN**
- GORDON LIMESTONE**
- MOINA SANDSTONE**
- ROLAND CONGLOMERATE**

- GAMBRIAN VOLCANICS & GREYWACKE**
- PRECAMBRIAN**
- DOVE GROUP**
- FISHER GROUP**
- HOWELL GROUP**
- DEVONIAN**
- DOVE GRANITE**

--- GENERALIZED PRECAMBRIAN CONTACTS

DEPT. OF MINES  
1872-45

I.B. JENNINGS  
SEN. GEOLOGIST 1961