

1873

895

5 cm

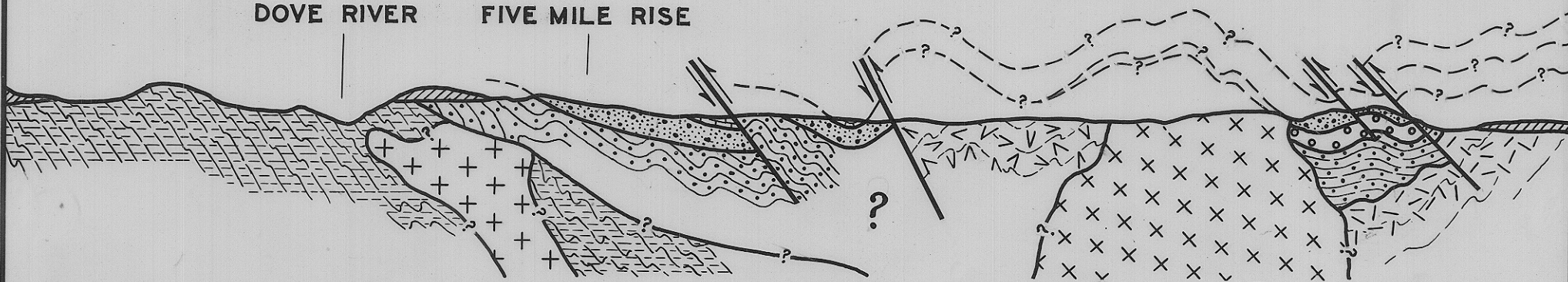
SSW.

NNE.

GEOLOGICAL SECTION ACROSS DOLCOATH GRANITE

0 1 2 3 MLS.

DOVE RIVER FIVE MILE RISE



		TERTIARY BASALT	ORDOVICIAN		ROLAND CONGLOMERATE
DEVONIAN	 	DOLCOATH GRANITE	CAMBRIAN	 	BULL CREEK FORMATION
		DOVE GRANITE			LORINNA GREYWACKE
ORDOVICIAN	 	GORDON LIMESTONE	PRE-CAMBRIAN	 	KERATOPHYRE
		MOINA SANDSTONE			DOVE GROUP

DEPT. OF MINES
1873-45

I. B. JENNINGS
SEN. GEOLOGIST 1961

Bull Creek to SSW (7)