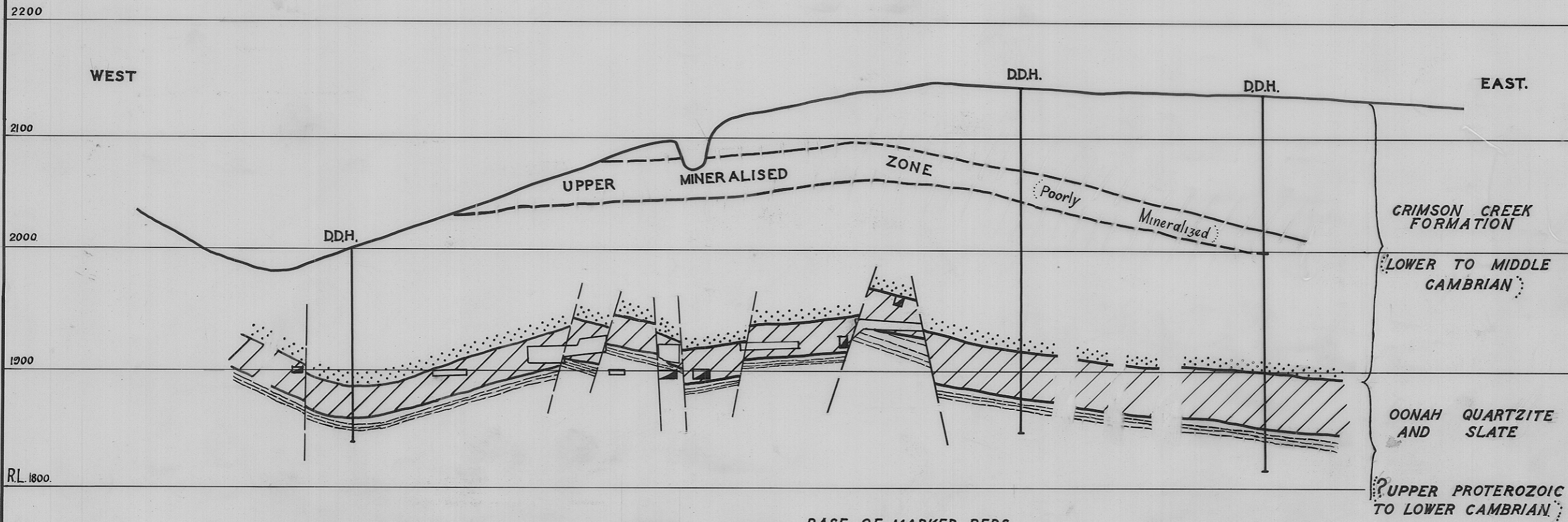


1885

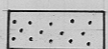
905

5 cm

SECTION THROUGH BATTERY MINE



0 100 200
FEET



BASE OF MARKER BEDS
(RED ROCK)



SECOND ORE HORIZON



SHALES IN FOOTWALL

1885-50

AFTER J.F. GILFILLAN
RENISON ASSOCIATED TIN MINES N.L.
1961