

1964

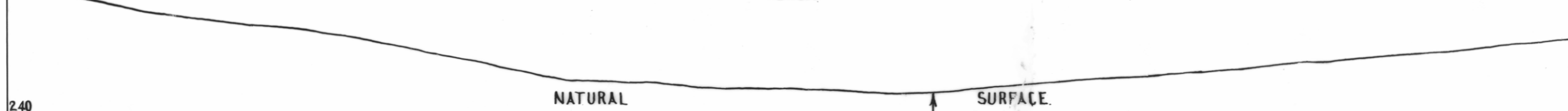
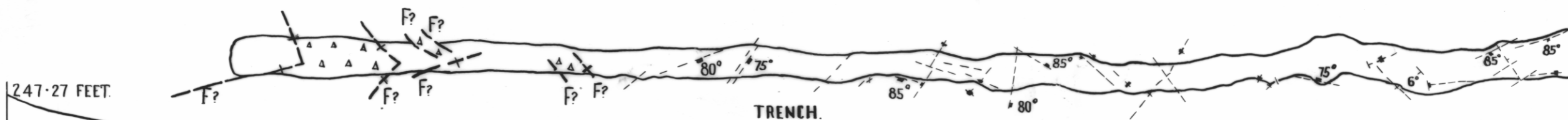
60

5 cm

FLAGSTAFF GULLY DAM SITE

SECTION THROUGH CENTRELINE OF DAM

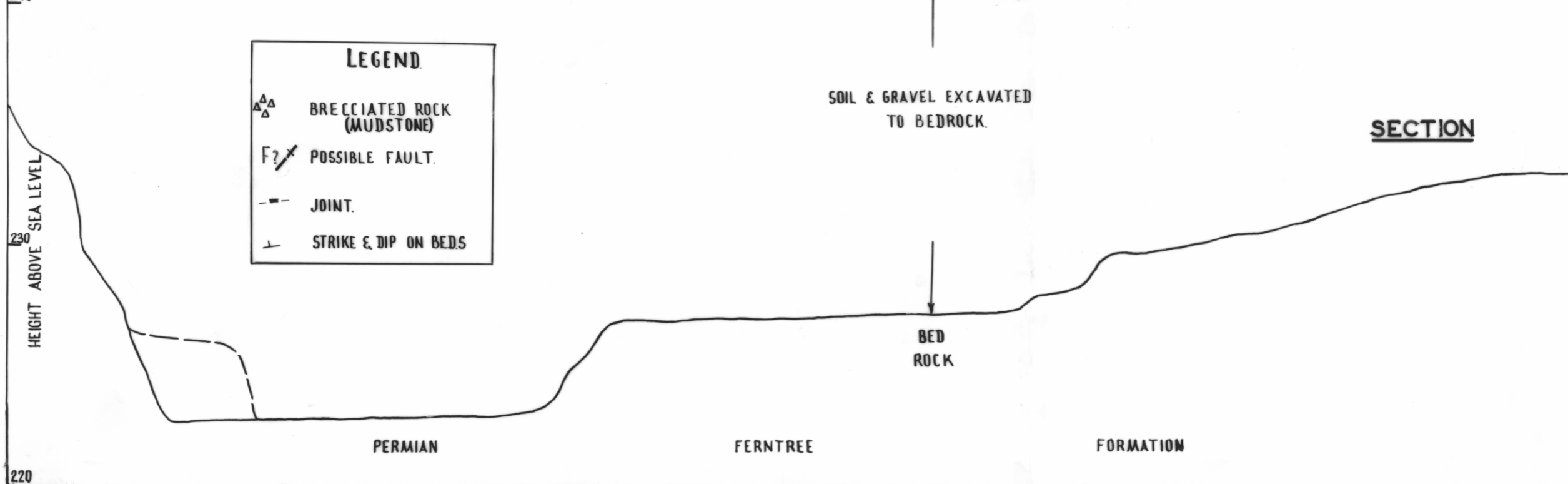
PLAN



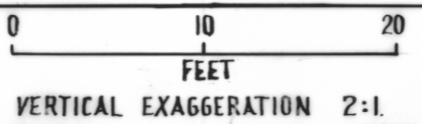
LEGEND.

- ▲▲ BRECCIATED ROCK (MUDSTONE)
- F? POSSIBLE FAULT.
- - - JOINT.
- └ STRIKE & DIP ON BEDS

SECTION



DEPT. OF MINES.
1964 - 82



R. JACK & GEVERARD
GEOLOGISTS
MARCH 1962.