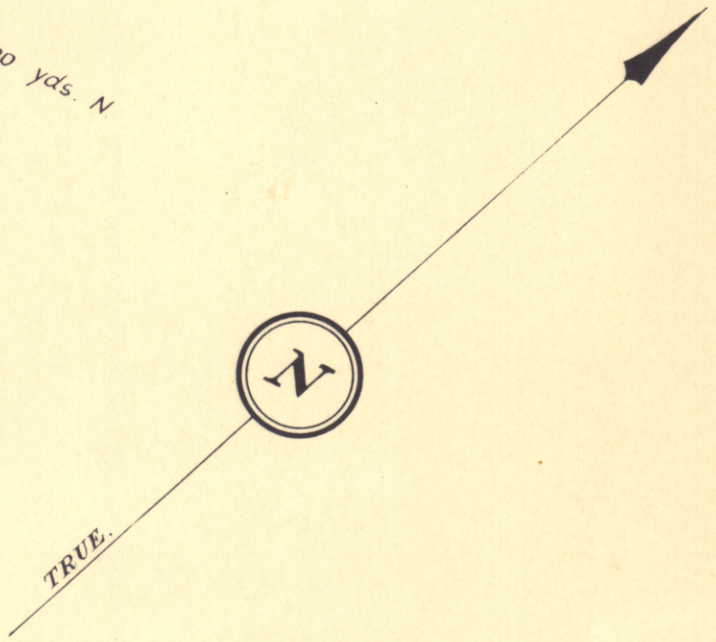
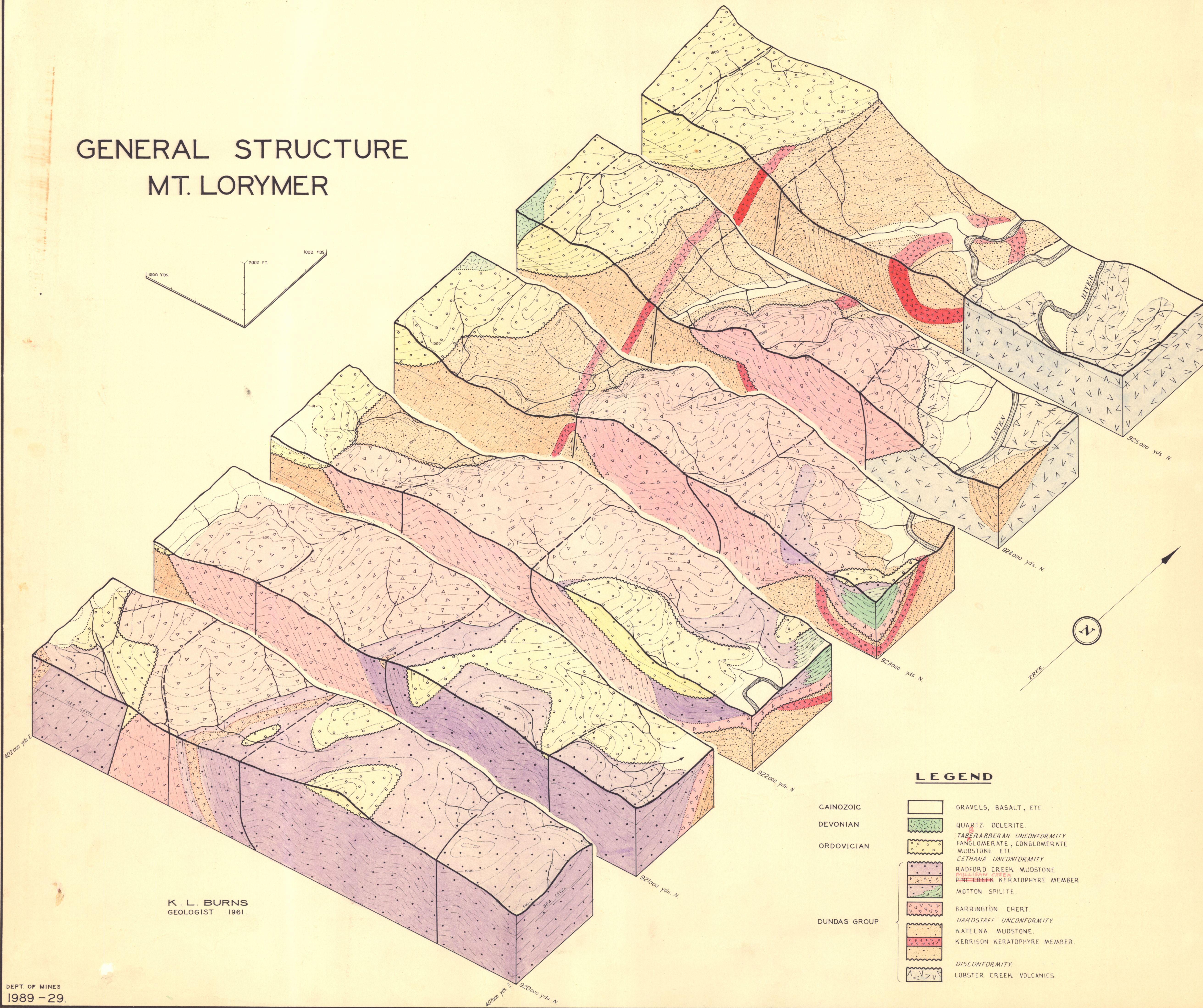
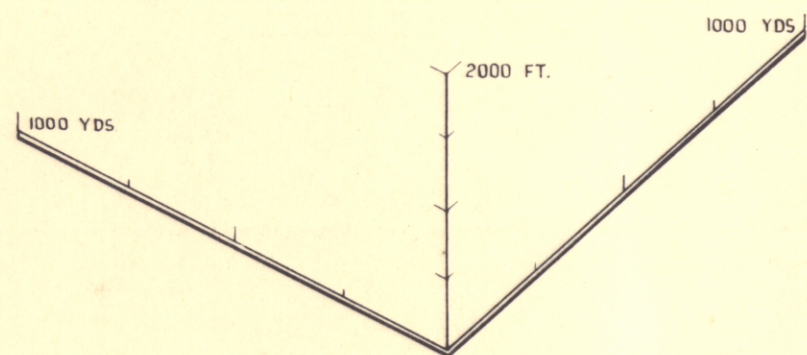


5 cm

GENERAL STRUCTURE MT. LORYMER



LEGEND

- CAINOZOIC
 - GRAVELS, BASALT, ETC.
- DEVONIAN
 - QUARTZ DOLERITE.
 - TABERBERAN UNCONFORMITY
 - FANGLOMERATE, CONGLOMERATE
 - MUDSTONE ETC.
- ORDOVICIAN
 - CETHANA UNCONFORMITY
 - RADFORD CREEK MUDSTONE.
 - MILL CREEK
 - PINE CREEK KERATOPHYRE MEMBER
 - MOTTON SPILITE
- DUNDAS GROUP
 - BARRINGTON CHERT.
 - HARDSTAFF UNCONFORMITY
 - KATEENA MUDSTONE.
 - KERRISON KERATOPHYRE MEMBER
- DISCONFORMITY
 - LOBSTER CREEK VOLCANICS

K. L. BURNS
GEOLOGIST 1961.